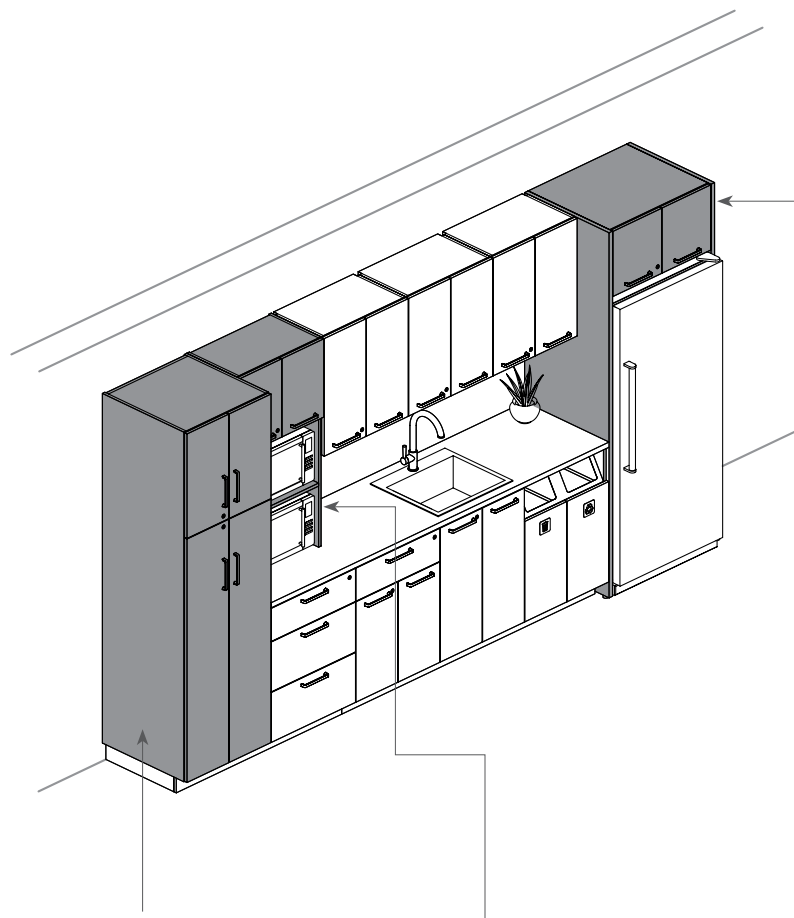


# storage cabinets

UNDERSTANDING STORAGE CABINETS . . . . .	64
STORAGE CABINETS COMPONENTS . . . . .	68
STORAGE CABINETS BASICS . . . . .	70
PLANNING WITH STORAGE CABINETS	
FRONT ALIGNMENT OVERVIEW . . . . .	73
INTERIOR CLEARANCE . . . . .	74
HINGE STYLES . . . . .	78
DRAWER STYLES . . . . .	78
CUT-OUT FOR STORAGE CABINET – MICROWAVE SECTION(S) & DOORS . . . . .	79
STORAGE CABINET SPECIFICATION HEIGHTS . . . . .	82
PLANNING WITH COUNTERTOP CABINET . . . . .	82
WASTE/RECYCLING UNITS . . . . .	83
PLANNING WITH RECYCLING/DISPOSAL UNITS . . . . .	84

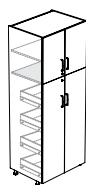
## understanding storage cabinets

Expansion Casework+ Storage Cabinets are designed to enhance functionality and provide additional storage space.



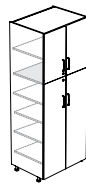
### Storage Cabinets

- Eleven styles are available:



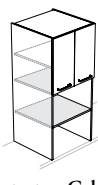
**Two-High Tall Cabinet –  
Doors with Interior Drawers  
(CETD)**

Comes with adjustable shelf(ves)  
in the upper section and with  
interior drawers in the bottom  
section



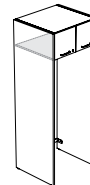
**Two-High Tall  
Cabinet – Doors  
(CETT)**

Comes with adjustable shelf(ves)  
in each section



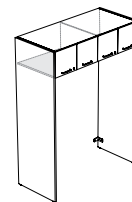
**Countertop Cabinet –  
Microwave Section(s)  
and Doors  
(CECM)**

- Sits directly on the Countertop
- Comes with adjustable shelf(ves) in the upper section
- Available with doors in the upper section and one or two microwave sections in the bottom section
- An optional Pass-Through Grommet is available to access wall outlets in each microwave section



**Cabinet Kit for One  
Appliance – Doors  
(CEKO)**

- Available for one or two appliances
- Come with adjustable shelf (if applicable)



**Cabinet Kit for Two  
Appliances – Doors  
(CEKT)**

**For Finishes; see page 70**

**For Pull Styles; see page 132**

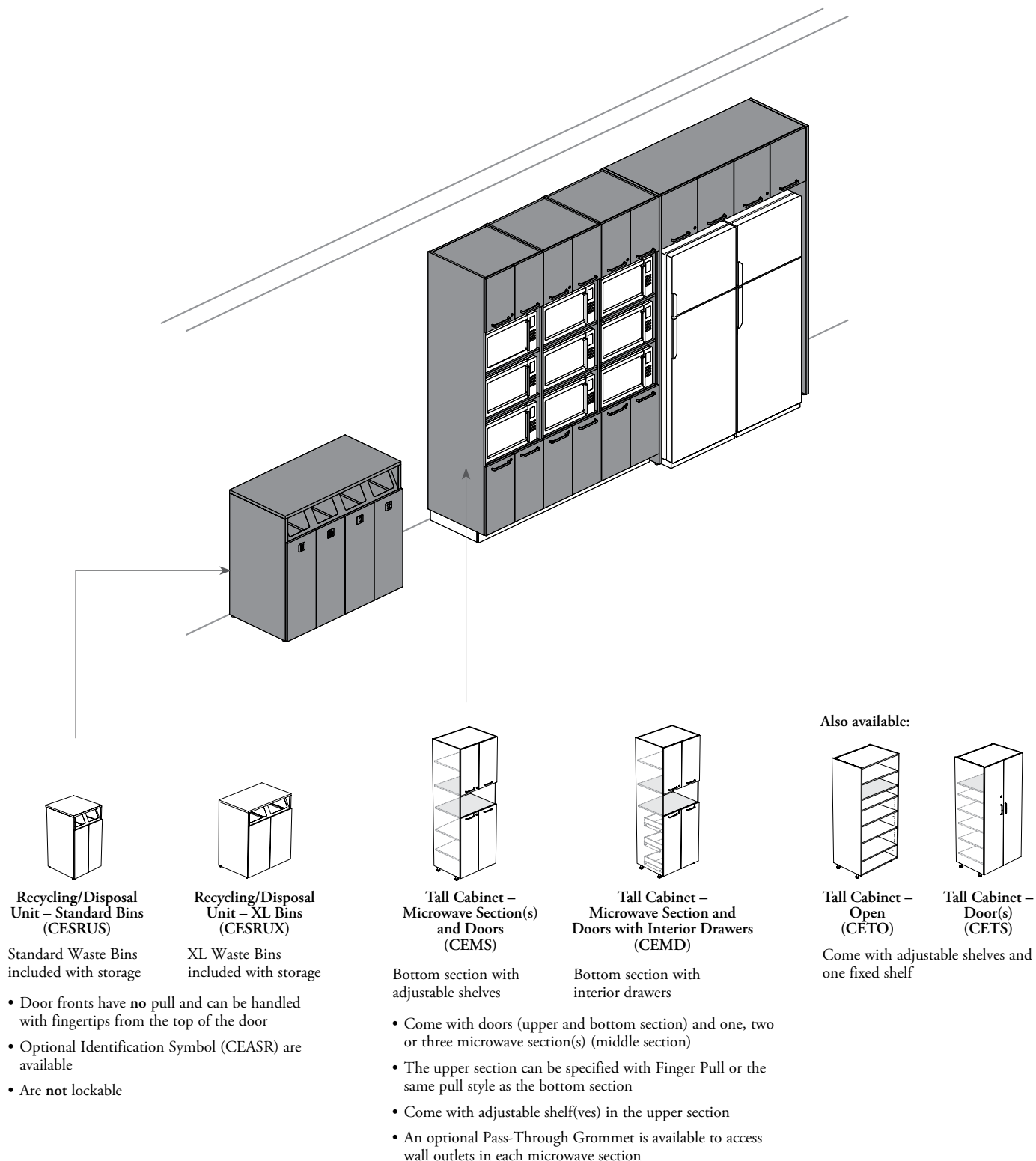
**For Lock Chart; see page 134**

**For Cabinets Product Offering; see page 138**

**For Grain Direction; see page 144**

# understanding storage cabinets (continued)

## Storage Cabinets (continued)

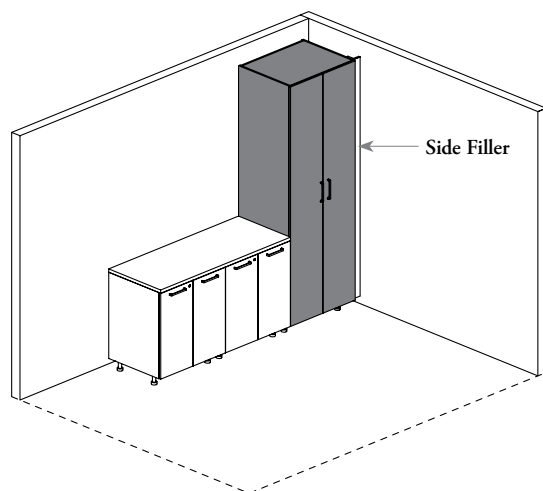


## understanding storage cabinets (continued)

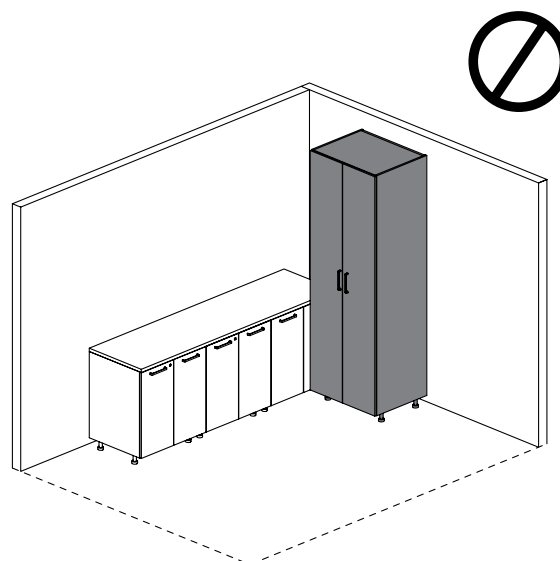
Following steps should be followed when planning with Storage Cabinets.

### how to plan

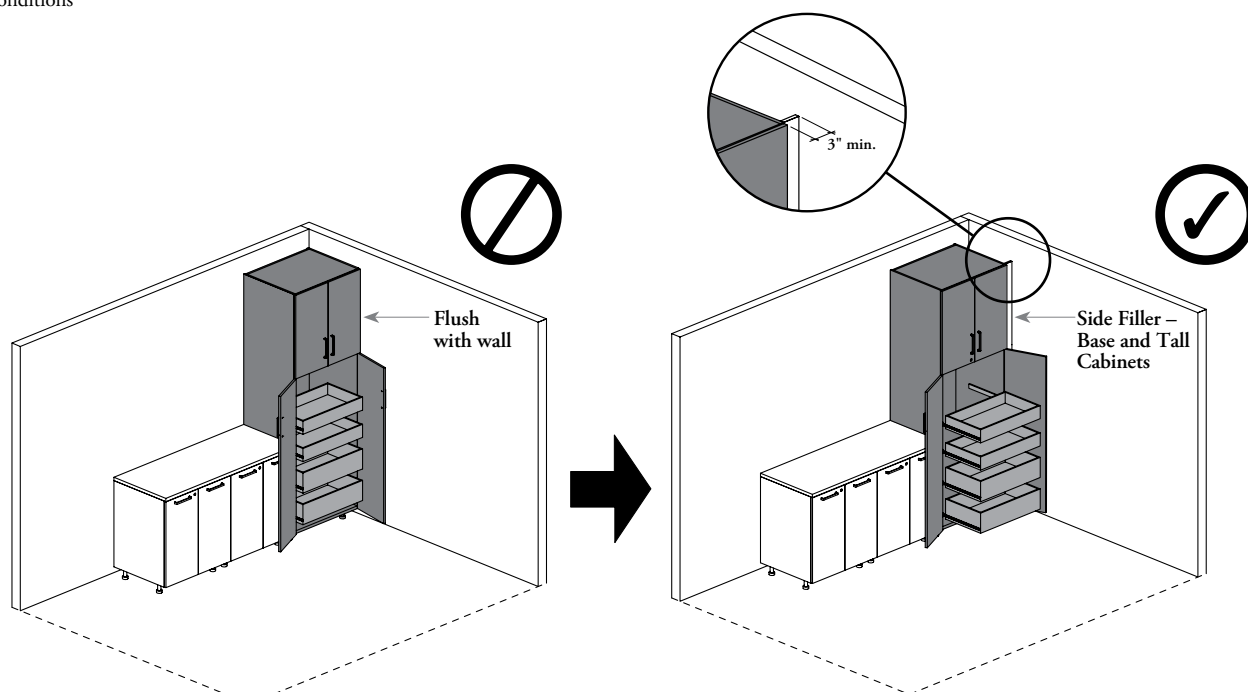
- Exact wall dimensions should be confirmed before choosing the cabinet widths
- It is the responsibility of the installer to securely attach the storage cabinet to the wall



When close to a wall, leave a gap between 2" and 6" at the end as installer can install the Side Filler to fit within wall conditions



Tall Cabinets should **not** be used in corner applications



Two-High Tall Cabinet – Doors with Interior Drawers (CETD) or Tall Cabinet – Microwave Section and Doors with Interior Drawers (CEMD)

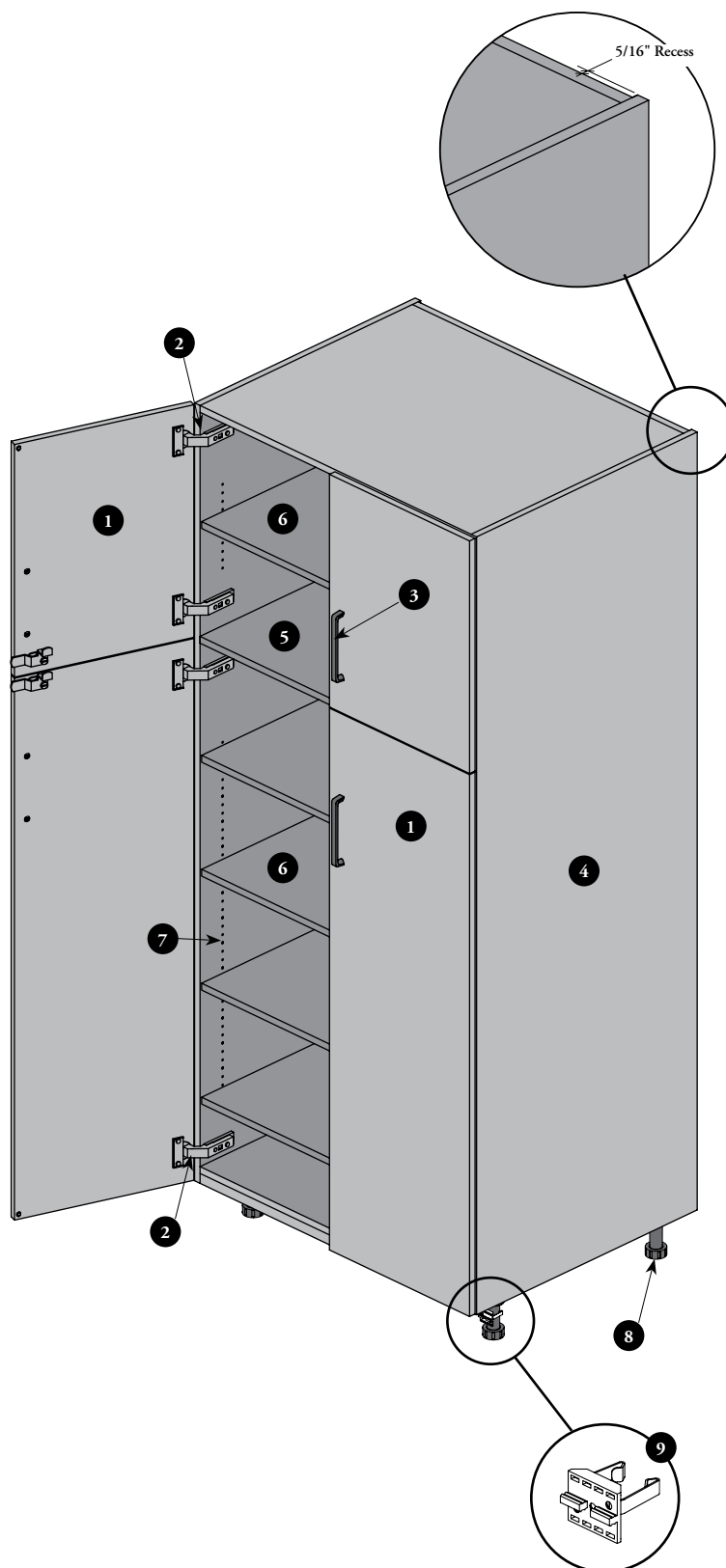
When close to a perpendicular wall, a minimum 3" gap must be left between wall and storage side. Otherwise, door opening may be limited and obstruct drawer's opening. This gap can be filled with a Side Filler – Base and Tall Cabinets (CEAFSB)





## storage cabinets components

- 1 **Doors**
    - 12" to 21" wide cabinets come with one door
    - 24" to 36" wide cabinets come with two doors
    - Locks and Keys are optional
  - 2 **Hinges**
    - Standard – Soft Close (S) hinges allow doors to open up to 110°
    - Full Extension – Soft Close (F) hinges allow doors to open up to 155°
    - The Hinge Style (F or S) is **not** available with all storage cabinet. Refer to individual product pages, for details
    - Come with hinge covers (for Standard – Soft Close (S) hinges only)
  - 3 As specified, the **Pulls** are included with doors.
    - Depending on the Storage Cabinet specified, some handle styles are **not** available. For more details, refer to Pull Styles on page 132 or to individual product pages
  - 4 **Case**
    - 11/16" construction with a 1" thick base with an additional 11/16" bottom in certain applications
    - 29" deep case have a shallow back to maintain a good access of storage space deep case from front
  - 5 **Fixed Shelf(ves)**
    - Number varies depending on cabinet configuration. Refer to individual product pages
    - 11/16" thick, full depth
  - 6 **Adjustable Shelves**
    - Number varies depending on cabinet configuration. Refer to individual product pages
    - 24" and 29" deep base cabinets come with 24" deep 11/16" thick adjustable shelf(ves)
    - Come with Metal Shelf Supports that help prevent shelf displacing
    - Holes at 1 1/4" intervals 7
    - Shelf for Cabinet (CEACS) can be ordered separately, see individual product pages for exceptions
  - 8 **Metal Adjustable Feet**
    - Create a minimum gap of 4 1/8" below the cabinets and provide a 1 1/2" leveling range
    - Come with Clips for Toe Kick to install the **mandatory** Toe Kick – Front (CEATF) 9
- Levelers for Cabinet Kits (CEKO or CEKT) or Recycling/Disposal Units CESRUS or CESRUX**
- Create a 3/8" gap under the cabinet side when leveled to minimum height
  - Allow 3 1/2" total leveling range

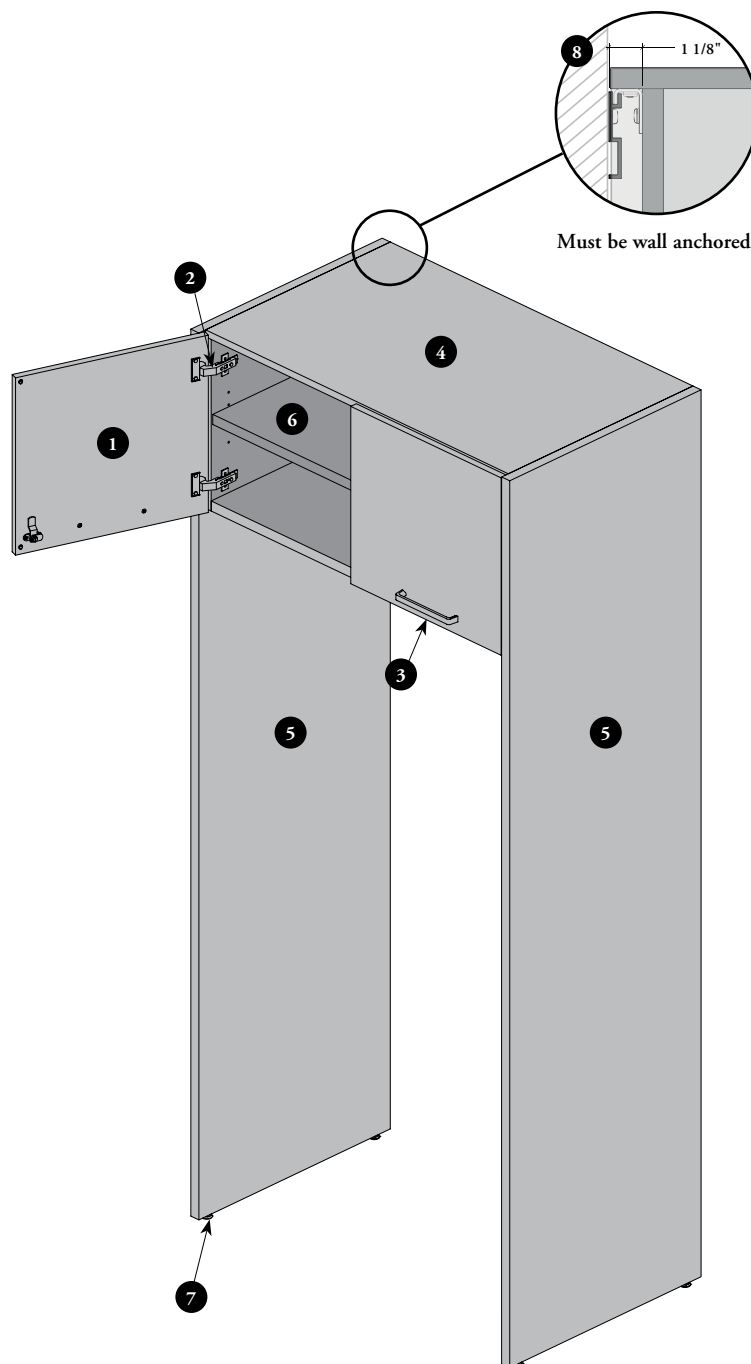


## storage cabinets components (continued)

applicable with cabinets kits for one or two appliances only

- 1 Doors**
  - 28" to 40" wide cabinets come with two doors (CEKO only)
  - 50" to 66" wide cabinets come with four doors (CEKT only)
  - Locks and Keys are optional
- 2 Hinges**
  - Standard – Soft Close (S) hinges allow doors to open up to 110°
  - Come with hinge covers
- 3** As specified, the **Pulls** are included with doors
- 4 Case and Gables** **5**
  - 11/16" construction with a 1" thick base
  - Specified width includes 1" gables thickness. Therefore Appliance Width Clearance equals to width –2"
- 6 Adjustable Shelves**
  - Number varies depending on cabinet configuration. Refer to individual product pages
  - 1" thick, full usable depth (3/16" front gap)
  - Come with Metal Shelf Supports that helps prevent shelf displacing
  - Holes at 1 1/4" intervals
  - Not compatible with Shelf for Cabinet (CEACS)
- 7 Levelers**
- 8 Wall-Mounted Rails, Hooks and Spacers**

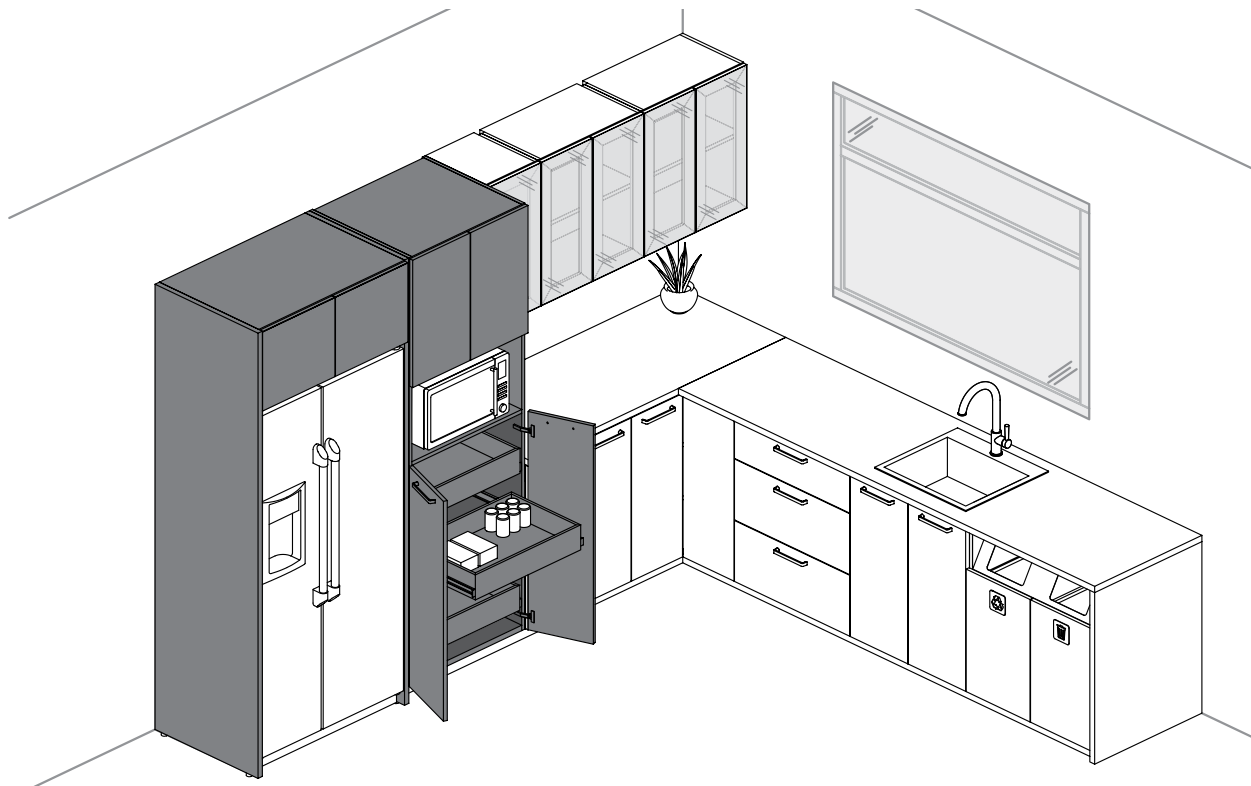
All included with Cabinet Kits but it is the responsibility of the installer to securely anchor these hardware to the wall



## storage cabinets basics

Storage Cabinets are available in a variety of widths and heights for maximum configuration possibilities. They can be used alone or combined with base and upper cabinets to provide convenient open or closed storage.

- ❗ Storage Cabinets overall dimensions are the actual dimensions of the finished product
- Must be anchored to a wall for stability except for Recycling/Disposal Units (CESRUS and CESRUX)
- Toe Kick – Front (CEATF) is **mandatory** for Tall Cabinet
- Toe Kick – Side (CEATS) is **mandatory** when side of Tall Cabinet is exposed
- Installer must provide wall mounting fasteners



### Finishes

- **Case:** Source Laminate or Flintwood (No Cathedral) except for Tall Cabinets – Doors with Interior Drawers (CETD or CEMD) and Recycling/Disposal Units (CESRUS or CESRUX)
  - **Gable:** Source Laminate or Flintwood (No Cathedral). Grade 2 Laminate\*\* is also available (CEKO and CEKT only)
  - **Shelves and Dividers** match the Case Finishes
  - **Door Front:** Source Laminate, Foundation Laminate, Grade 2 Laminate, Flintwood (Cathedral)
  - **Edge Trim:** Edge Trim Colors and Not Applicable\*
  - **Drawer Bodies:** Filing Drawer Style is finished in Black and Standard – Soft-Close (S) and Undermount – Soft-Close (U) Drawer Styles are finished in White
  - **Pull(s)** (Not available with pull styles 8, X, W or Z): Foundation, Accent or Mica
  - **Levelers** (only on Storage Cabinets (CEKO, CEKT, CESRUS and CESRUX): Chrome
  - **Pass-Through Grommet:** Platinum (only available with CEMS, CEMD and CECM)
  - **Locks & Keys:** Brushed Chrome
  - **35L or 90L Waste/Recycling Bins:** Grey (only available with CESRUS and CESRUX)
  - **Open Fascia:** Foundation, Accent or Mica
  - **Internal Metal Parts** are finished in Recycled Paint
- \* Not Applicable (NA) option is only available when Flintwood Front Finishes are specified  
\*\* When Grade 2 Laminate is specified, The Accent colors are **not** available.

### Finish Restrictions

Not all finishes are applicable with the Case and Door Finishes, refer to individual product pages for more details

For Pull Styles; see page 132

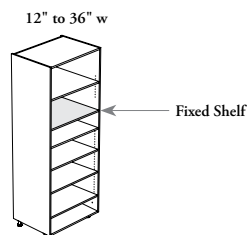
For Lock Chart; see page 134

## storage cabinets basics (continued)

- If applicable, two Soft-Close Hinge Styles can be specified:
  - Full Extension – Soft-Close (F)
  - Standard – Soft-Close (S)
- Three Door Swing Directions options are available. The handedness is determined by the location of the hinges:
  - Door Swing – Left (L) (available for 12" to 21" wide cabinets)
  - Door Swing – Right (R) (available for 12" to 21" wide cabinets)
  - Not Applicable (N) (available for 24" to 36" wide cabinets)

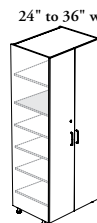
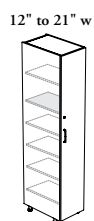
### Tall Cabinet – Open (CETO)

- Depth: 24"
- Widths: 12" to 36" (3" increments)
- Heights: 72", 84", 90" and 96"



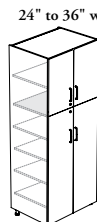
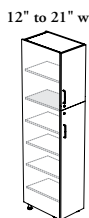
### Tall Cabinet – Door(s) (CETS)

- Depths: 24" and 29"
- Widths: 12" to 36" (3" increments)
- Heights: 72", 84", 90" and 96"
- Hinge Style can be specified (F or S)



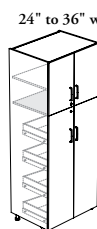
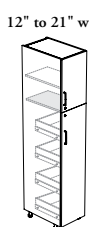
### Two-High Tall Cabinet – Doors (CETT)

- Depths: 24" and 29"
- Widths: 12" to 36" (3" increments)
- Heights: 84", 90" and 96"
- The upper section Hinge Style is Standard – Soft Close
- The bottom section Hinge Style can be specified (F or S)



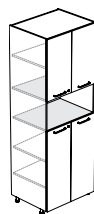
### Two-High Tall Cabinet – Doors with Interior Drawers (CETD)

- Depths: 24" and 29"
- Widths: 12" to 36" (3" increments)
- Heights: 84", 90" and 96"
- The upper section Hinge Style is Standard – Soft Close
- The bottom section comes with four Interior Drawers with Standard – Soft Close (S) or Undermount – Soft Close (U) style
- The bottom section Hinge Style is Full Extension – Soft Close (F)

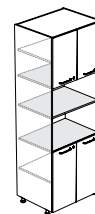


### Tall Cabinet – Microwave Section(s) and Doors (CEMS)

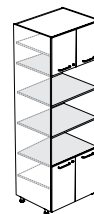
- Depths: 24" and 29"
- Widths: 24 to 36" (3" increments)
- Heights: 84", 90" and 96"
- Adjacent Base Cabinet Heights: 32" and 35"
- When One Microwave (1) option is specified, Adjacent Base Cabinet Height is not available
- The upper section Hinge Style is Standard – Soft Close
- The bottom section Hinge Style can be specified (F or S)
- Three Microwave Section Configurations are available:



One Microwave  
(1)



Two Microwaves  
(2)

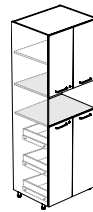


Three Microwaves  
(3)

## storage cabinets basics (continued)

### Tall Cabinet – Microwave Section and Doors with Interior Drawers (CEMD)

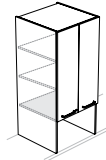
- Depths: 24" and 29"
- Widths: 24" to 36" (3" increments)
- Heights: 84", 90" or 96"
- The upper section Hinge Style is Standard – Soft Close
- The bottom section comes with three Interior Drawers with Standard – Soft Close (S) or Undermount – Soft Close (U) style
- Only one Microwave Section Configuration is available:



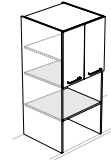
One Microwave  
(1)

### Countertop Cabinet – Microwave Section(s) and Doors (CECM)

- Depths: 15", 20" or 24"
- Widths: 24" to 30" (3" increments)
- Heights: 84", 90" and 96"
- Base Cabinet Heights: 32" and 35"
- Countertop Thickness: 1 3/16" (M)
- The upper section Hinge Style is Standard – Soft Close (S)
- Two Microwave Section Configurations are available:



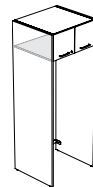
One Microwave  
(1)



Two Microwaves  
(2)

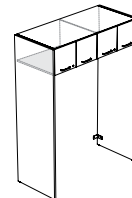
### Cabinet Kit for One Appliance – Doors (CEKO)

- Depths: 24", 25", 29" and 30"
- Widths: 28" to 40" (2" increments)
- Heights: 84", 90" or 96"
- Appliance Heights: 69", 72" and 75"
- The door section Hinge Style is Standard – Soft Close (S)



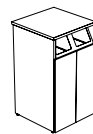
### Cabinet Kit for Two Appliances – Doors (CEKT)

- Depths: 24", 25", 29" and 30"
- Widths: 50" to 66" (2" increments)
- Heights: 84", 90" and 96"
- Appliance Heights: 69", 72" and 75"
- The door section Hinge Style is Standard – Soft Close (S)

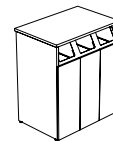


### Recycling/Disposal Unit – Standard Bins (CESRUS)

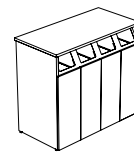
- Depth: 18" and 24"
- Each door of the waste section is 12" wide
- Heights: 36" and 42"
- Two Identifications are available:
  - Symbol Ready (S)
  - No Identification (N) (Shown)
 refer to Accessories section for more details
- Door Hinge Style is Standard – Soft Close (S) only
- Includes 35L waste/recycling bins, refer to page 51 for more details
- Three configurations are available:



Dual (D)



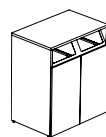
Triple (T)



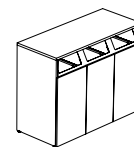
Quad (Q)

### Recycling/Disposal Unit – XL Bins (CESRUX)

- Depth: 18" and 24"
- Each door of the waste section is 18" or 24" wide depending of the width configuration
- Heights: 36" and 42"
- Two Identifications are available:
  - Symbol Ready (S)
  - No Identification (N) (Shown)
 refer to Accessories section for more details
- Door Hinge Style is Standard – Soft Close (S) only
- Includes 90L waste/recycling bins, refer to page 51 for more details
- Two configurations are available:



Dual (D)



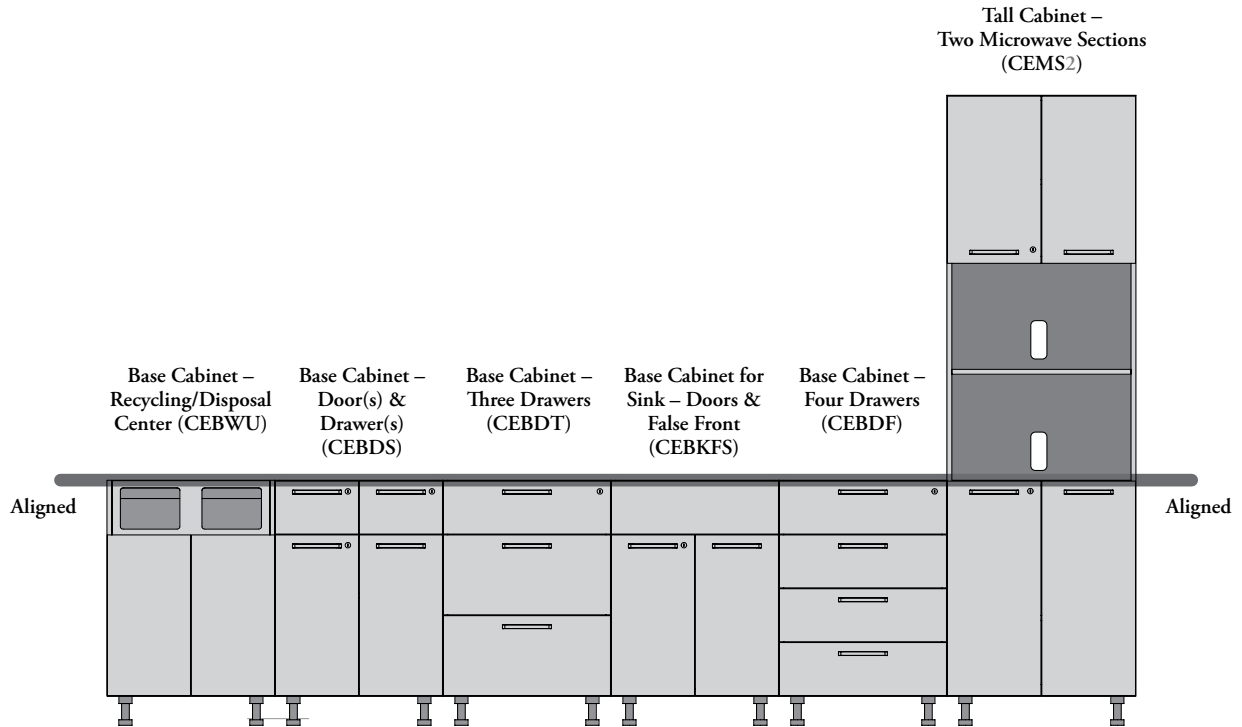
Triple (T)

# planning with storage cabinets

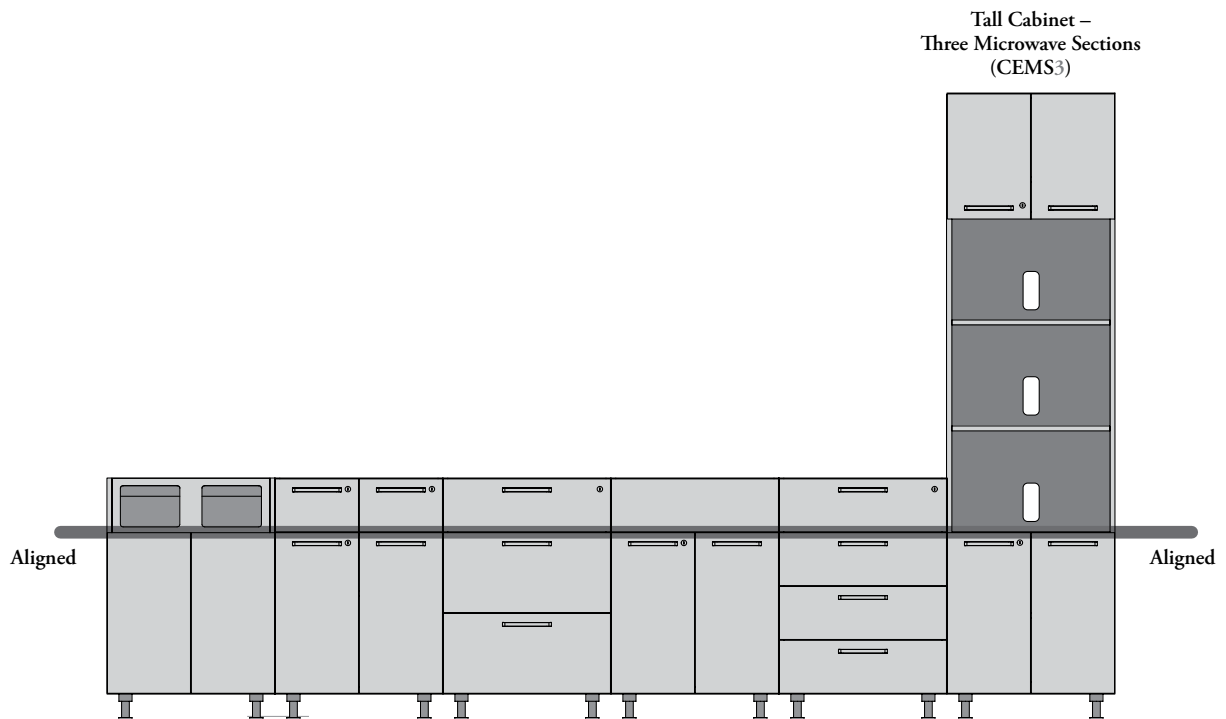
The following should be considered when planning with Expansion Casework+ Storage Cabinets.

## front alignment overview

- The bottom section of a Tall Cabinet – Two Microwave Sections (CEMS2) will align a base cabinet of the same adjacent height



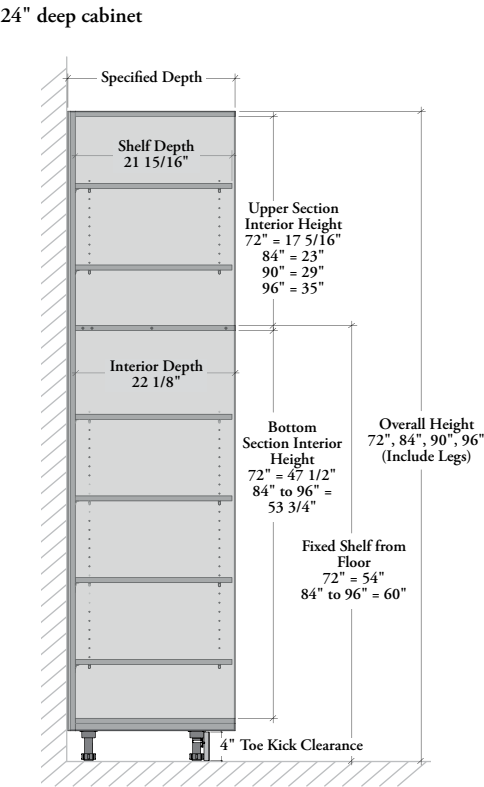
- The bottom section of a Tall Cabinet – Three Microwave Sections (CEMS3) will align with fronts illustrated below when specified the same adjacent height



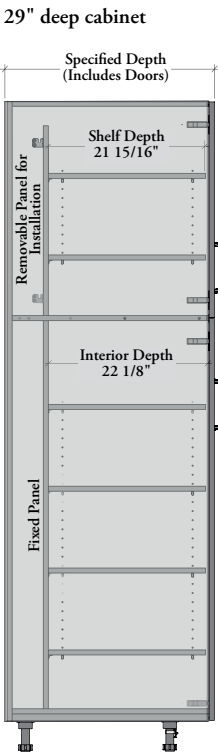
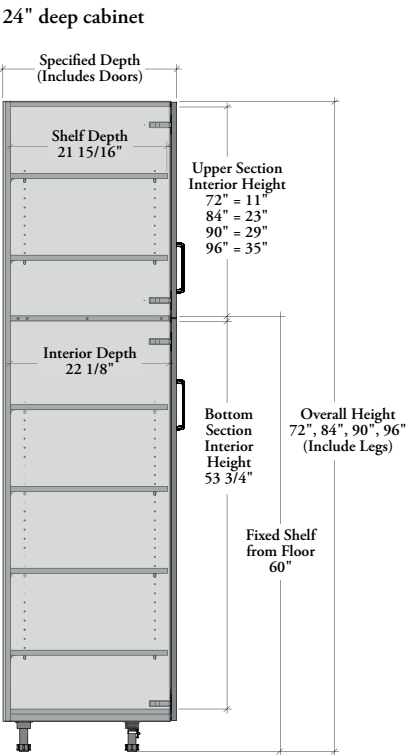
# planning with storage cabinets (continued)

## interior clearance for storage cabinets with shelves

Tall Cabinet – Open (CETO)



Tall Cabinet – Door(s) (CETS, CETT and CETD)





# planning with storage cabinets (continued)

## interior clearance for storage cabinets with microwave section(s)

- It is the specifier's responsibility to ensure that the appliance opening complies with the manufacturer recommendations
- Internal width microwave section is determined by subtracting 1.4" from specified width

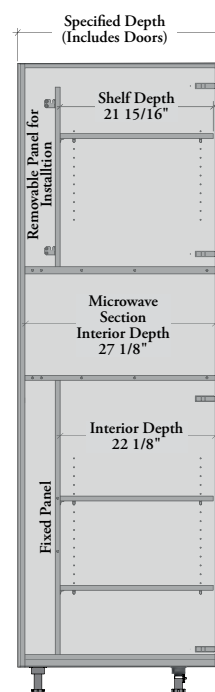
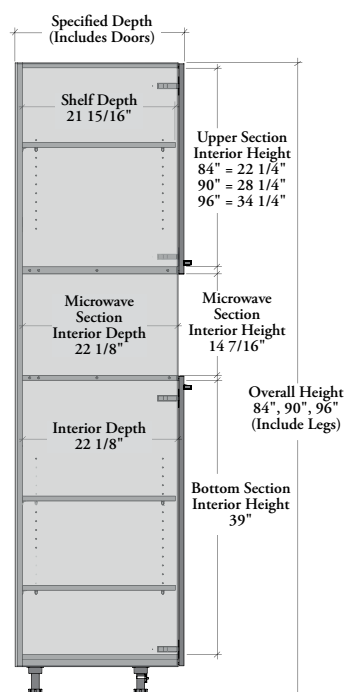
### Tall Cabinet – Microwave Section(s) (CEMS, CEMD and CECM)

#### One Microwave (1)

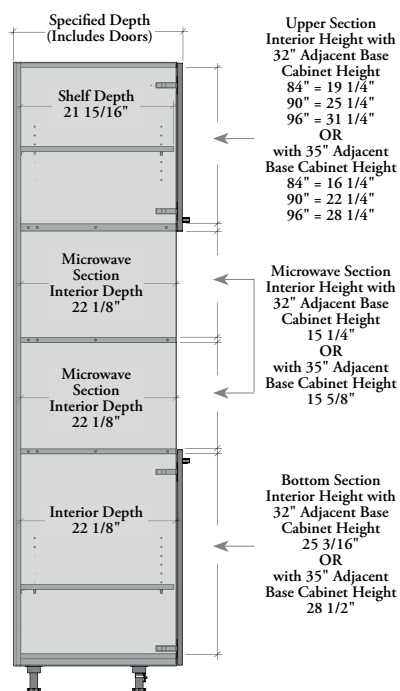
24" deep cabinet

SIDE VIEWS

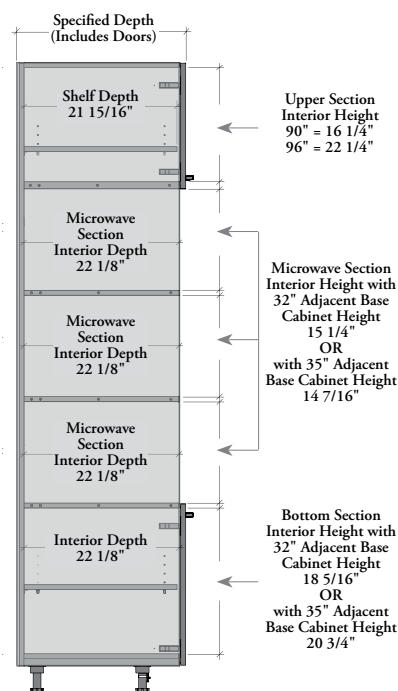
29" deep cabinet



#### Two Microwaves (2)



#### Three Microwaves (3)



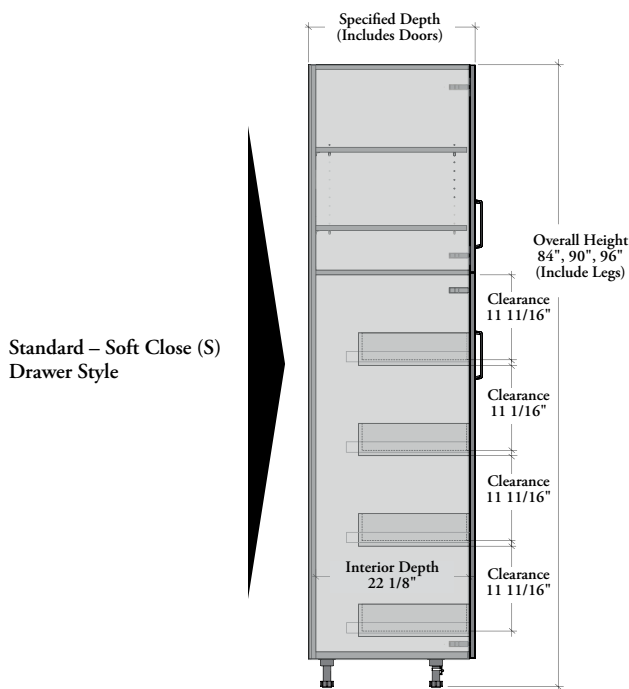
## planning with storage cabinets (continued)

### interior clearance for storage cabinets with interior drawers

- It is the specifier's responsibility to ensure that the appliance opening complies with the manufacturer recommendations
- Both Drawer Styles are available: Standard – Soft Close (S) and Undermount – Soft Close (U)
- Internal width microwave section is determined by subtracting 1.4" from specified width
- Accessories may be specified separately, refer to the Accessories section for details

#### Tall Cabinet – Interior Drawers (CETD and CEMD)

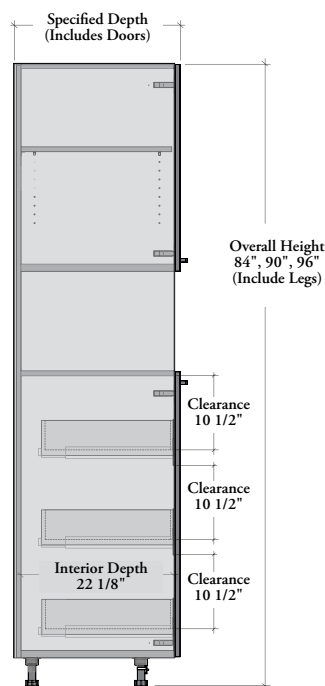
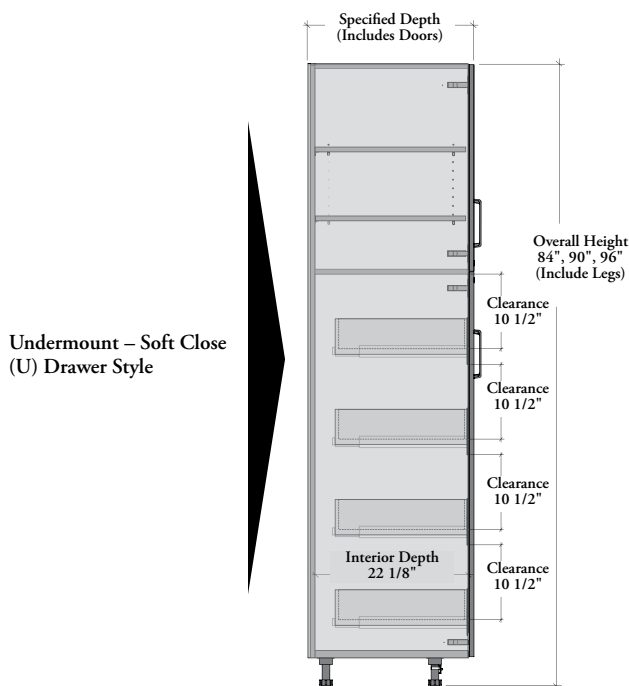
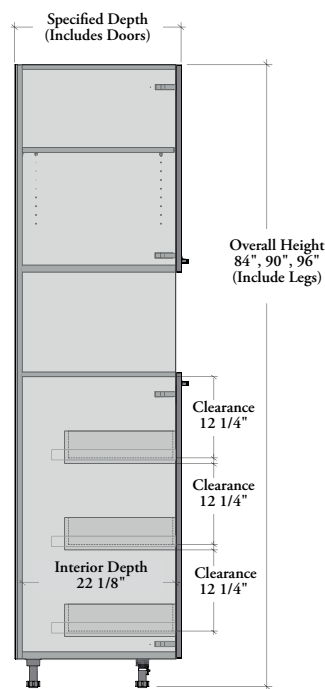
Doors with Interior Drawers (CETD)



#### SIDE VIEWS

For Shelf Depth, Upper, Microwave and Bottom Interior Height, refer on previous pages

Microwave Section & Doors with Interior Drawers (CEMD)

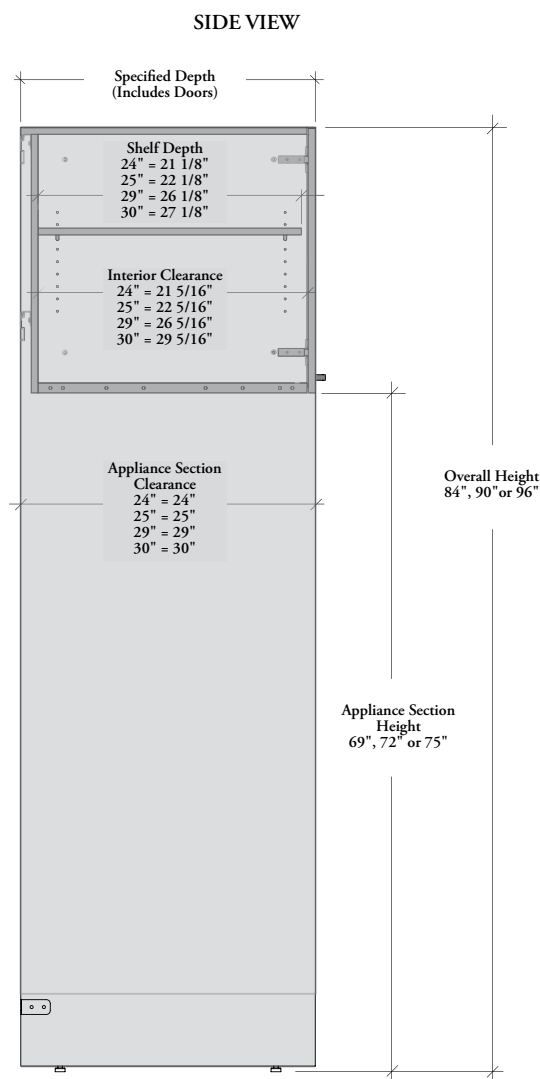


# planning with storage cabinets (continued)

## interior clearance for cabinets kits

- It is the specifier's responsibility to ensure that the appliance opening complies with the manufacturer recommendations
- Appropriate attachment methods and hardware for a secure and safe installation must be determined by the installer and meet the applicable local building code and laws
- Installer must provide wall mounting fasteners

### Cabinet Kits for One or Two Appliances – Doors (CEKO and CEKT)



## planning with storage cabinets (continued)

### hinge styles

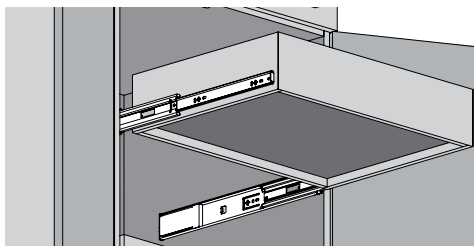
- Two Hinge Styles are available: **Standard – Soft Close (S)** and **Full Extension – Soft Close (F)**. Refer to the individual product pages for more details
- With Two-High Tall Cabinets, the upper section Hinge Style is Standard – Soft Close. If applicable, the bottom section Hinge Style can be specified Standard – Soft Close (S) or Full Extension – Soft Close (F)
- Storage Cabinets with Interior Drawers (CETD or CEMD) always feature Full Extension – Soft Close (F) Hinge Style for bottom section, refer to the page 66 for more details

### drawer styles

- Accessories such as Cutlery Tray (CEAOT) and Utility Box (CEAOB) can be specified separately, refer to the Accessories section for more details
- Only applicable with Storage Cabinets with Interior Drawers (CETD or CEMD)
- Two drawer styles are available:

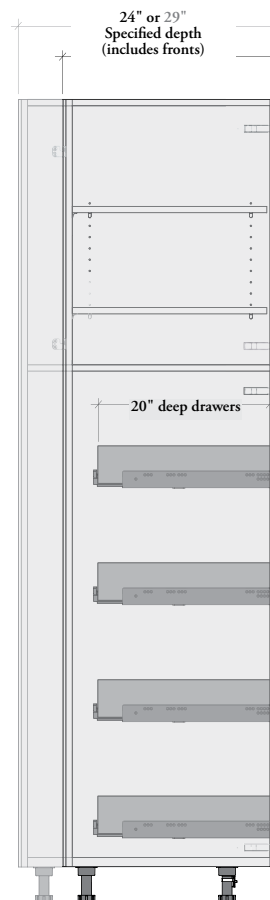
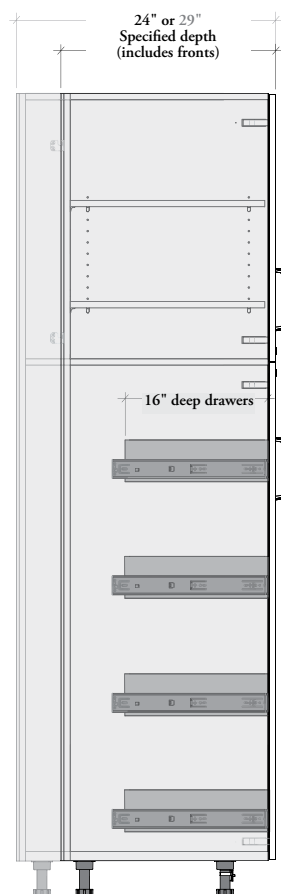
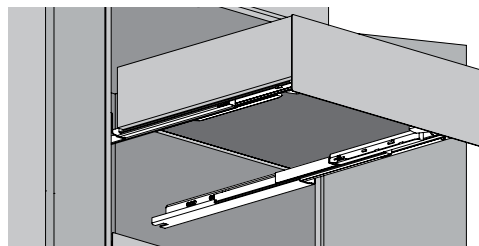
#### Standard – Soft Close (S)

Standard drawers feature soft close full extension exposed slides on a 16" deep white drawer body



#### Undermount – Soft Close (U)

Undermount drawers feature soft close full extension undermount slides on a 20" deep white drawer body



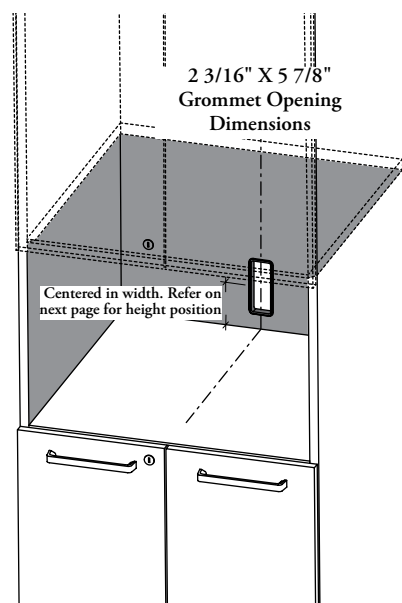
## planning with storage cabinets (continued)

❗ It is the specifier's responsibility to ensure that the appliance clearance complies with the manufacturer recommendations

### cut-out for storage cabinet – microwave section(s) & doors (CEMS, CEMD and CECM)

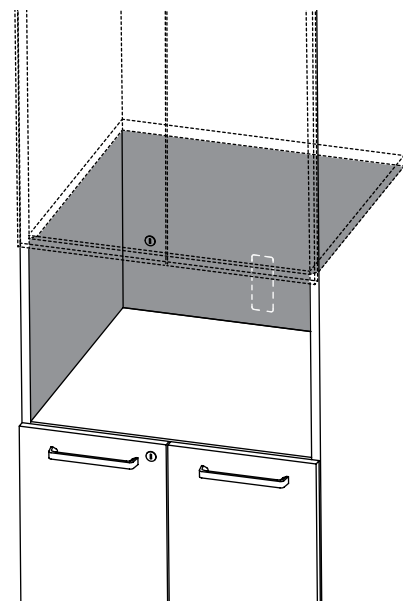
#### with pass-through grommet (W) option

This option features a factory made cut-out with a plastic Pass-Through Grommet. Wall outlets must be planned accordingly. For details on Pass-Through Grommet heights, see next pages



#### no cut-out (N) option

This option comes without cut-out. Therefore an opening for wall outlets will have to be cut on-site at the required position and shape. A Pass-Through Grommet (CEAGR) can be specified separately if the on-site cut-out matches its shape

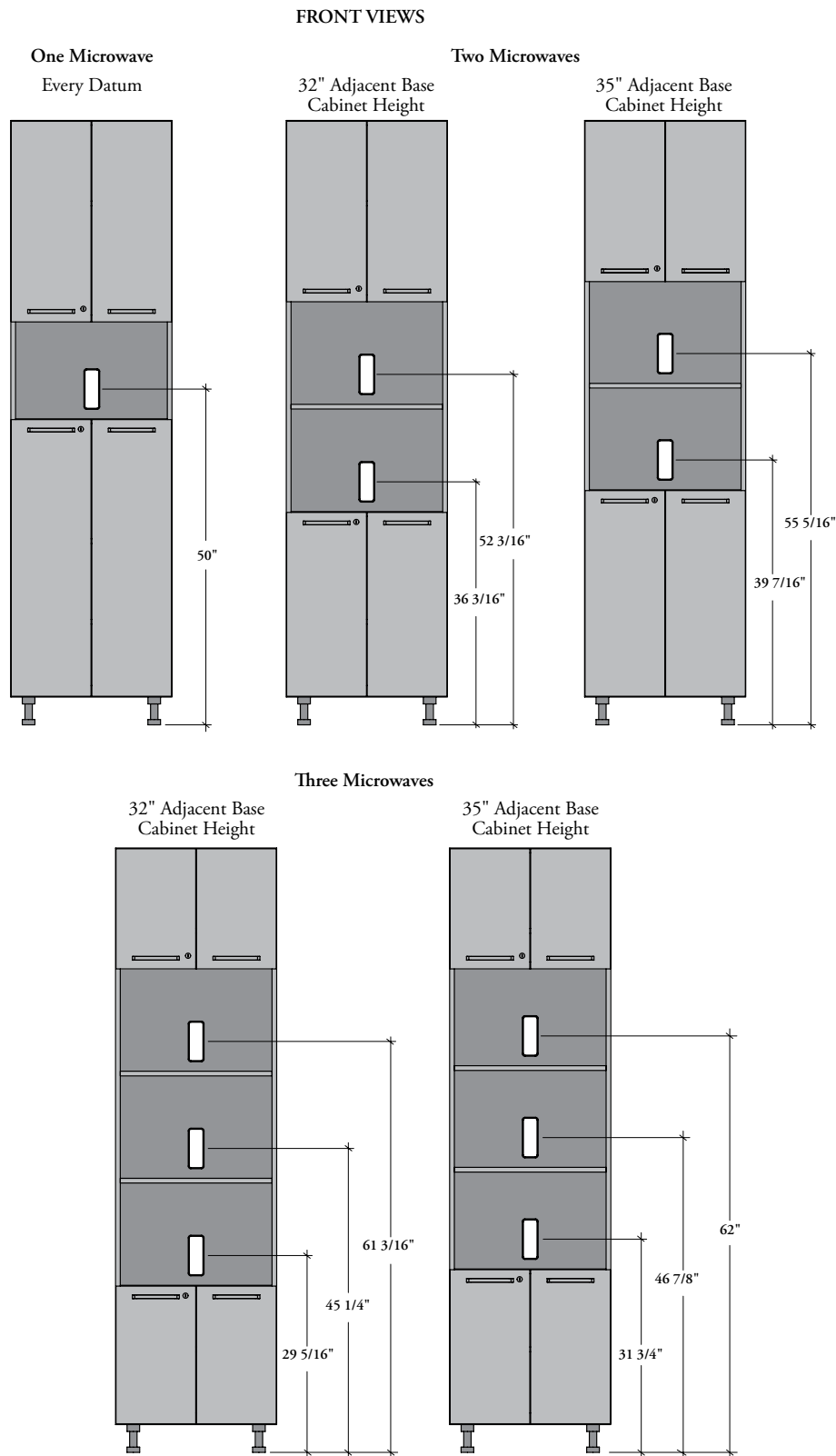


planning with storage cabinets (continued)

cut-out for storage cabinet – microwave section(s) & doors (continued)

pass-through grommet heights (when leveled at 0")

Tall Cabinet – Microwave Section(s) and Doors (CEMS) or  
Tall Cabinet – Microwave Section and Doors with Interior Drawers (CEMD)



# planning with storage cabinets (continued)

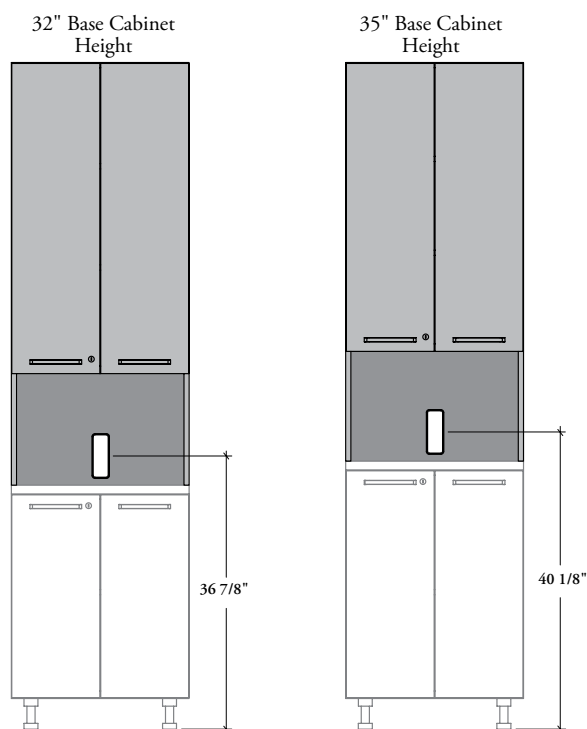
cut-out for storage cabinet – microwave section(s) & doors (continued)

pass-through grommet heights (when leveled at 0") (continued)

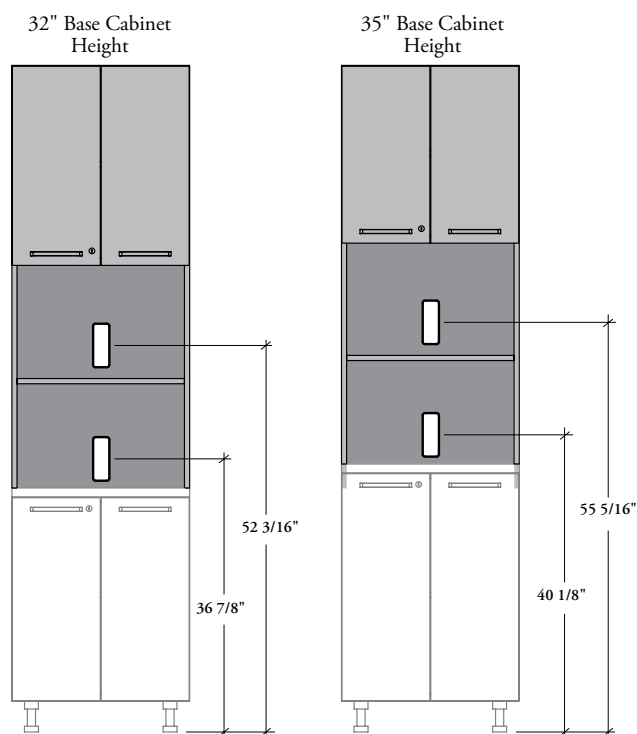
Counterop Cabinet – Microwave Section(s) and Doors (CECM)

## FRONT VIEWS

### One Microwave



### Two Microwaves



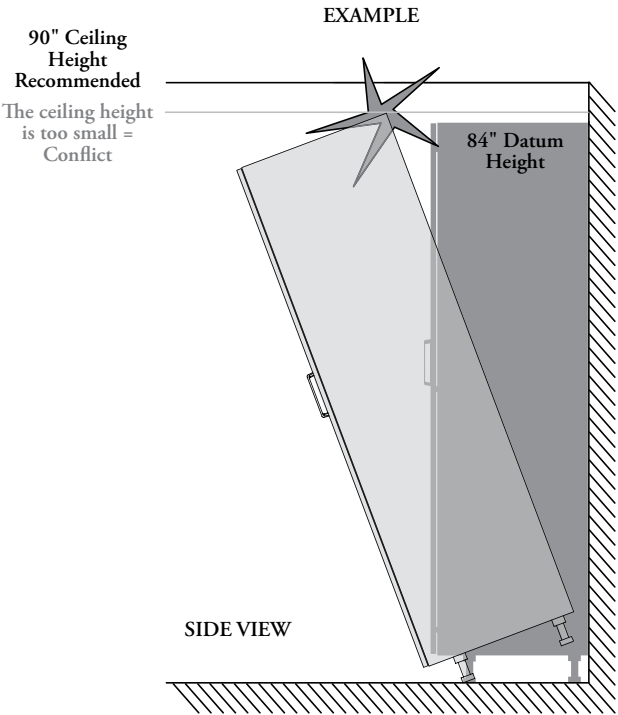
# planning with storage cabinets (continued)

The following should be considered when planning with storage cabinets.

## storage cabinet specification heights

Minimum ceiling height recommended  
This chart shows the the minimum ceiling height recommended to easily flip Tall Cabinets on-site for an easy installation

Datum Height	Minimum Ceiling Height
84"	90"
90"	95"
96"	101"

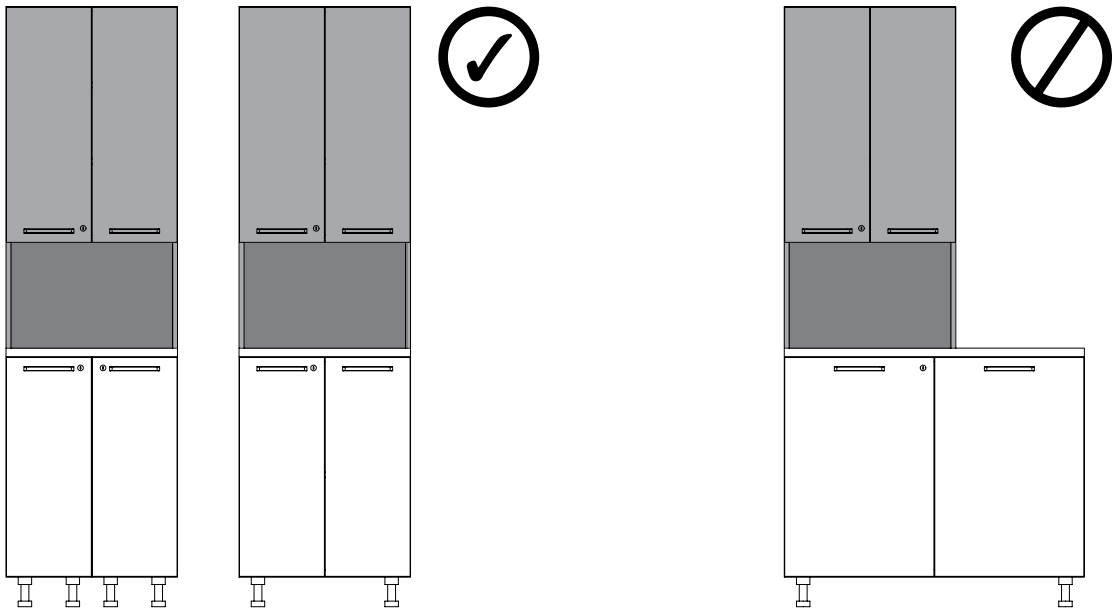


## planning with countertop cabinet

- Should be used on the Countertop (CEWCT) 1 3/16" (M) to ensure alignment with other products
- Must be anchored to the wall
- **Cannot** be mounted onto a Wall-Mounted Base Cabinet

### FRONT VIEW

- Must be on-module on one or multiple base cabinets



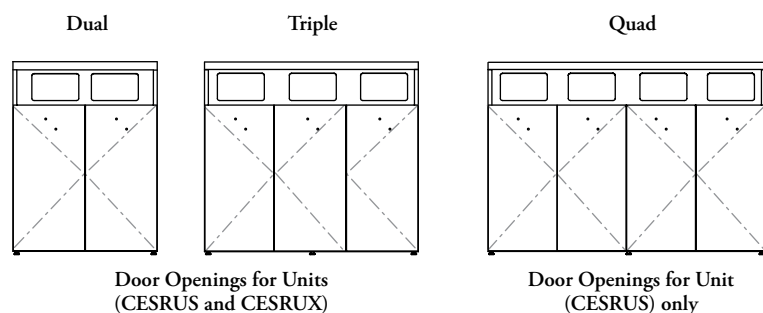


# planning with storage cabinets (continued)

Recycling/Disposal Units are available in a variety of widths and configurations.

## waste/recycling units

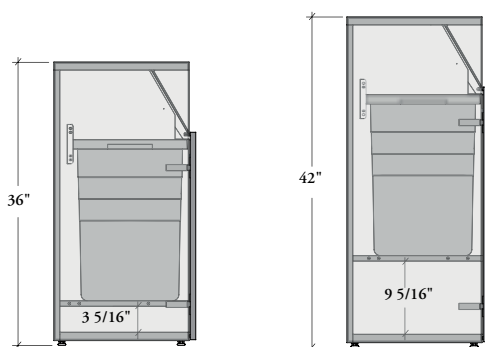
- Provides enclosed storage space for Recycling/Waste Bins
- Construction: Case and fronts are 11/16" except the top that is 1" thick
- Each Standard Recycling/Waste Bin has a capacity of 35L and XL Bin has a capacity of 90L
- Each waste compartment can be identified with a Recycling/Waste Symbol (CEASR), sold separately. The door front comes with pre-drill holes, when Symbol Ready (S) is specified. For more details on waste identification, refer to page 131



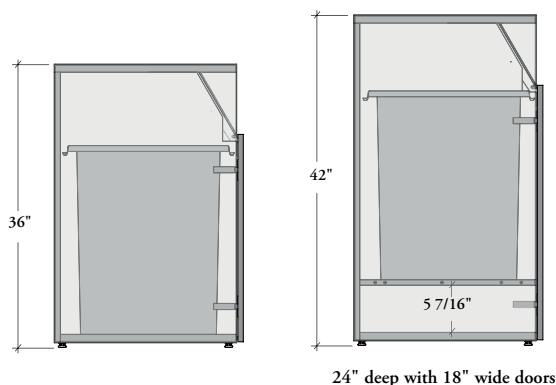
## door openings

- The Recycling/Disposal Unit – Standard Bins is available in Dual (D), Triple (T) and Quad (Q) configuration and the Recycling/Disposal – XL Bins is available in Dual (D) and Triple (T) configuration
- The units come with Standard – Soft Close (S) Hinge Style only

Recycling/Disposal Unit – Standard Bins (CESRUS)

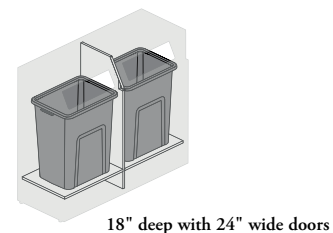


Recycling/Disposal Unit – XL Bins (CESRUX)



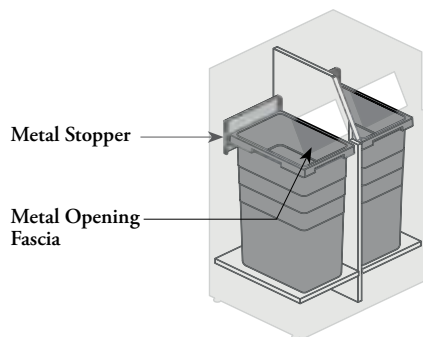
## interior configuration & clearance

- One Recycling/Waste Bin is included for each section
- Fixed Shelf included with Unit – Standard Bins:
  - Bins lay on a fixed shelf, height varies depending on total datum height specified
  - 36" high configuration: 3 5/16" clearance under shelf
  - 42" high configuration: 9 5/16" clearance under shelf
- Fixed Shelf included with Unit – XL Bins:
  - At 42" high, bins lay on a fixed shelf, leaving a 5 7/16" clearance under shelf
  - 36" high configuration: No fixed shelf, bins lay directly on the base
  - Available at 24" deep with 18" wide doors, or 18" deep with 24" wide doors. Both sharing the same bin, in different orientations



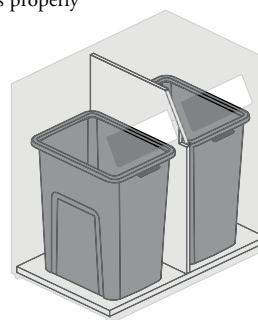
## planning with storage cabinets (continued)

### waste/recycling units (continued)



#### angled metal opening fascia & metal stopper

- A fixed Angled Metal Opening Fascia is included and protect the surrounding of the openings
- With Standard Bins (CESRUS), a metal stopper maintains the bins close to the front, while with XL Bins (CESRUX), depth of storage is adapted to fit the bins properly



### planning with recycling/disposal units

Features an integrated 1" thick top, which will **not** align when used next to a base cabinet with a 1 3/16" thick countertop

