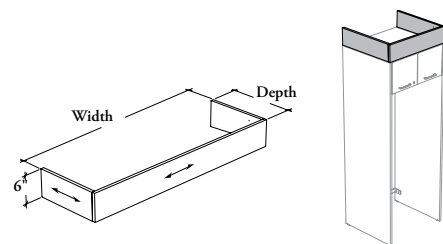


# finishing components

**Xpress**

## CEAFTK

### Top Filler – Cabinet Kit for Appliance



#### WHAT'S INCLUDED

1 front panel, 2 side panels, brackets and hardware.

#### NOTES

Top Filler Depth must match the cabinet depth.

Top Filler Width must include the dimension of the following product (if applicable): Side Filler – Cabinet Kit for Appliance (CEAFSK).

When Flintwood Front Finish is specified, only Not Applicable (NA) Edge Trim Finish is available.

Compatible with storage listed below:

- Cabinet Kit for One Appliance – Doors (CEKO)
- Cabinet Kit for Two Appliances – Doors (CEKT)

**Xpress** See *Xpress Program* and/or specification software for finishes availability.

#### PRODUCT OPTIONS

Filler Configuration	Depth	Width	Height	Front Finish	Edge Trim Finish	Side Finish
F Flush Front	24, 25, 29, 30	28, 30, 32, 34, 36, 38, 40, 42, 44, 46, 50, 52, 54, 56, 58, 60, 62, 64, 66, 68, 70, 72	06	Source Laminate Foundation Laminate Grade 2 Laminate Flintwood (No Cathedral)	Edge Trim Colors <b>NA</b> Not Applicable	Source Laminate Flintwood (No Cathedral)

#### SAMPLE ORDER CODE

<b>CEAFTK F</b>	<b>24</b>	<b>64</b>	<b>06</b>	<b>XG</b>	<b>SS</b>	<b>XG</b>
-----------------	-----------	-----------	-----------	-----------	-----------	-----------

#### DIMENSIONS INCHES / MM

D	W	H
24 / 610	28 / 711	6 / 152
24 / 610	30 / 762	6 / 152
24 / 610	32 / 813	6 / 152
24 / 610	34 / 867	6 / 152
24 / 610	36 / 914	6 / 152
24 / 610	38 / 965	6 / 152
24 / 610	40 / 1016	6 / 152
24 / 610	42 / 1067	6 / 152
24 / 610	44 / 1118	6 / 152
24 / 610	46 / 1168	6 / 152
24 / 610	50 / 1270	6 / 152
24 / 610	52 / 1321	6 / 152
24 / 610	54 / 1372	6 / 152
24 / 610	56 / 1422	6 / 152
24 / 610	58 / 1473	6 / 152
24 / 610	60 / 1524	6 / 152
24 / 610	62 / 1575	6 / 152
24 / 610	64 / 1626	6 / 152
24 / 610	66 / 1676	6 / 152
24 / 610	68 / 1727	6 / 152
24 / 610	70 / 1778	6 / 152
24 / 610	72 / 1829	6 / 152

#### PRICING

FLUSH FRONT (F)							
SOURCE LAMINATE FRONT		FOUNDATION LAMINATE FRONT		GRADE 2 LAMINATE FRONT		FLINTWOOD FRONT	
SIDE FINISH							
	Source Laminate	Source Laminate	Source Laminate	Flintwood	Source Laminate	Flintwood	
	280	311	343	822	553	1032	
	284	318	352	831	565	1044	
	289	325	361	840	577	1056	
	294	332	371	850	589	1068	
	299	339	380	859	601	1080	
	304	346	390	869	613	1092	
	309	354	399	878	625	1104	
	314	361	409	888	636	1115	
	318	367	417	896	648	1127	
	323	374	426	905	660	1139	
	333	389	445	924	686	1165	
	338	396	455	934	699	1178	
	358	418	479	958	727	1206	
	363	425	489	968	741	1220	
	368	432	498	977	754	1233	
	374	441	509	988	768	1247	
	379	448	518	997	781	1260	
	384	455	528	1007	794	1273	
	389	462	537	1016	808	1287	
	394	469	547	1026	821	1300	
	399	477	556	1035	834	1313	
	404	484	566	1045	848	1327	

Pricing is continued on the following page.

**C E A F T K**

**Top Filler – Cabinet Kit for Appliance (Continued)**

**DIMENSIONS  
INCHES / MM**

**PRICING**

DIMENSIONS			PRICING							
			FLUSH FRONT (F)							
			SOURCE LAMINATE FRONT		FOUNDATION LAMINATE FRONT		GRADE 2 LAMINATE FRONT		FLINTWOOD FRONT	
			SIDE FINISH							
D	W	H	Source Laminate	Source Laminate	Source Laminate	Flintwood	Source Laminate	Flintwood		
25 / 635	28 / 711	6 / 152	280	311	343	822	553	1032		
25 / 635	30 / 762	6 / 152	284	318	352	831	565	1044		
25 / 635	32 / 813	6 / 152	289	325	361	840	577	1056		
25 / 635	34 / 867	6 / 152	294	332	371	850	589	1068		
25 / 635	36 / 914	6 / 152	299	339	380	859	601	1080		
25 / 635	38 / 965	6 / 152	304	346	390	869	613	1092		
25 / 635	40 / 1016	6 / 152	309	354	399	878	625	1104		
25 / 635	42 / 1067	6 / 152	314	361	409	888	636	1115		
25 / 635	44 / 1118	6 / 152	318	367	417	896	648	1127		
25 / 635	46 / 1168	6 / 152	323	374	426	905	660	1139		
25 / 635	50 / 1270	6 / 152	333	389	445	924	686	1165		
25 / 635	52 / 1321	6 / 152	338	396	455	934	699	1178		
25 / 635	54 / 1372	6 / 152	358	418	479	958	727	1206		
25 / 635	56 / 1422	6 / 152	363	425	489	968	741	1220		
25 / 635	58 / 1473	6 / 152	368	432	498	977	754	1233		
25 / 635	60 / 1524	6 / 152	374	441	509	988	768	1247		
25 / 635	62 / 1575	6 / 152	379	448	518	997	781	1260		
25 / 635	64 / 1626	6 / 152	384	455	528	1007	794	1273		
25 / 635	66 / 1676	6 / 152	389	462	537	1016	808	1287		
25 / 635	68 / 1727	6 / 152	394	469	547	1026	821	1300		
25 / 635	70 / 1778	6 / 152	399	477	556	1035	834	1313		
25 / 635	72 / 1829	6 / 152	404	484	566	1045	848	1327		
29 / 737	28 / 711	6 / 152	289	320	352	848	558	1054		
29 / 737	30 / 762	6 / 152	293	327	361	857	570	1066		
29 / 737	32 / 813	6 / 152	298	334	370	866	582	1078		
29 / 737	34 / 867	6 / 152	303	341	380	876	594	1090		
29 / 737	36 / 914	6 / 152	308	348	389	885	606	1102		
29 / 737	38 / 965	6 / 152	313	355	399	895	618	1114		
29 / 737	40 / 1016	6 / 152	318	363	408	904	631	1127		
29 / 737	42 / 1067	6 / 152	323	370	418	914	643	1139		
29 / 737	44 / 1118	6 / 152	327	376	426	922	655	1151		
29 / 737	46 / 1168	6 / 152	332	383	435	931	667	1163		
29 / 737	50 / 1270	6 / 152	342	398	454	950	693	1189		
29 / 737	52 / 1321	6 / 152	347	405	464	960	706	1202		
29 / 737	54 / 1372	6 / 152	367	427	488	984	734	1230		
29 / 737	56 / 1422	6 / 152	372	434	498	994	748	1244		
29 / 737	58 / 1473	6 / 152	377	441	507	1003	761	1257		
29 / 737	60 / 1524	6 / 152	383	450	518	1014	775	1271		
29 / 737	62 / 1575	6 / 152	388	457	527	1023	788	1284		
29 / 737	64 / 1626	6 / 152	393	464	537	1033	802	1298		
29 / 737	66 / 1676	6 / 152	398	471	546	1042	815	1311		
29 / 737	68 / 1727	6 / 152	403	478	556	1052	828	1324		
29 / 737	70 / 1778	6 / 152	408	486	565	1061	842	1338		
29 / 737	72 / 1829	6 / 152	413	493	575	1071	855	1351		

Pricing is continued on the following page.

# finishing components

**Xpress**

## CEAFTK

### Top Filler – Cabinet Kit for Appliance (Continued)

DIMENSIONS  
INCHES / MM

PRICING

			FLUSH FRONT (F)					
			SOURCE LAMINATE FRONT	FOUNDATION LAMINATE FRONT	GRADE 2 LAMINATE FRONT	FLINTWOOD FRONT		
			SIDE FINISH					
D	W	H	Source Laminate	Source Laminate	Source Laminate	Flintwood	Source Laminate	Flintwood
30 / 762	28 / 711	6 / 152	289	320	352	848	558	1054
30 / 762	30 / 762	6 / 152	293	327	361	857	570	1066
30 / 762	32 / 813	6 / 152	298	334	370	866	582	1078
30 / 762	34 / 867	6 / 152	303	341	380	876	594	1090
30 / 762	36 / 914	6 / 152	308	348	389	885	606	1102
30 / 762	38 / 965	6 / 152	313	355	399	895	618	1114
30 / 762	40 / 1016	6 / 152	318	363	408	904	631	1127
30 / 762	42 / 1067	6 / 152	323	370	418	914	643	1139
30 / 762	44 / 1118	6 / 152	327	376	426	922	655	1151
30 / 762	46 / 1168	6 / 152	332	383	435	931	667	1163
30 / 762	50 / 1270	6 / 152	342	398	454	950	693	1189
30 / 762	52 / 1321	6 / 152	347	405	464	960	706	1202
30 / 762	54 / 1372	6 / 152	367	427	488	984	734	1230
30 / 762	56 / 1422	6 / 152	372	434	498	994	748	1244
30 / 762	58 / 1473	6 / 152	377	441	507	1003	761	1257
30 / 762	60 / 1524	6 / 152	383	450	518	1014	775	1271
30 / 762	62 / 1575	6 / 152	388	457	527	1023	788	1284
30 / 762	64 / 1626	6 / 152	393	464	537	1033	802	1298
30 / 762	66 / 1676	6 / 152	398	471	546	1042	815	1311
30 / 762	68 / 1727	6 / 152	403	478	556	1052	828	1324
30 / 762	70 / 1778	6 / 152	408	486	565	1061	842	1338
30 / 762	72 / 1829	6 / 152	413	493	575	1071	855	1351

