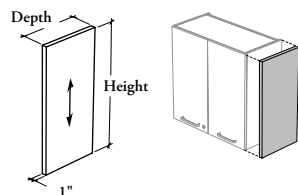


finishing components

Xpress

CEAEU

End Panel – Upper Cabinet



WHAT'S INCLUDED

1 end panel and mounting hardware.

NOTES

End Panel is **not** mandatory when a cabinet is specified with Integrated End Panel.

End Panel must match the cabinet depth.

Compatible with all Upper Cabinets.

When Grade 2 Laminate is specified, the Accent colors are **not** included.

Xpress See *Xpress Program* and/or specification software for finishes availability.

PRODUCT OPTIONS

Depth	Height	End Panel Finish
12, 15	15, 24, 27, 30, 33, 36, 39, 42, 45, 51	Source Laminate Grade 2 Laminate Flintwood (No Cathedral)

SAMPLE ORDER CODE

CEAEU 15	24	XG
----------	----	----

DIMENSIONS INCHES / MM

D	H
12 / 305	15 / 381
12 / 305	24 / 610
12 / 305	27 / 686
12 / 305	30 / 762
12 / 305	33 / 838
12 / 305	36 / 914
12 / 305	39 / 991
12 / 305	42 / 1067
12 / 305	45 / 1143
12 / 305	51 / 1295
15 / 381	15 / 381
15 / 381	24 / 610
15 / 381	27 / 686
15 / 381	30 / 762
15 / 381	33 / 838
15 / 381	36 / 914
15 / 381	39 / 991
15 / 381	42 / 1067
15 / 381	45 / 1143
15 / 381	51 / 1295

PRICING

END PANEL FINISH		
Source Laminate	Grade 2 Laminate	Flintwood
68	103	267
89	144	303
97	159	315
104	173	326
111	187	338
118	200	350
125	214	362
132	228	374
140	243	386
154	271	410
75	118	281
100	169	330
108	185	346
116	202	362
124	218	379
133	236	395
141	253	411
149	269	427
157	286	443
173	319	476