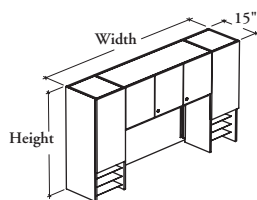


mounted storage & accessories

Xpress

B _ D L L

Double Tower Hutch with Shelves – Solid Doors



This hutch can be mounted on most desks and credenzas and provides overhead storage.

WHAT'S INCLUDED

1 hutch, 2 extrusions for tool rail, 1 removeable shelf per section (43" high hutch, central section only), 1 metal adjustable shelf (inside each shelf tower), 3 metal fixed shelf (outside each shelf tower), lock and keys (as specified), mounting hardware, and accessories as listed below:

	Width		
	48" to 60"	66" to 78"	84"
Door	2	3	4
Divider	n/a	1	1

WHAT'S EXCLUDED

Top for Hutch (B_HT) and accessories (BTU, BLTY, BLED, BOTB, BOHP, TBK6S, and BOTR).

NOTES

Tower doors have a touch latch and are **not** lockable.

You must specify the thickness of the worksurface on which the hutch will be installed.

PRODUCT OPTIONS

Worksurface Thickness	Depth	Width	Height	Door Front Finish	Edge Trim Finish	Case Finish	Shelf and Hardware Finish	Key Style
D 1"	15	48, 54, 60, 66, 72, 78, 84	37, 43	Source Laminate	Edge Trim Colors	Source Laminate	Foundation	N No Lock K Keyed Alike R Keyed Randomly
M 1 3/16"				Foundation Laminate			Mica	
X 1 9/16"								

SAMPLE ORDER CODE

BMDLL	15	72	37	LW	ST	XS	E	R
--------------	-----------	-----------	-----------	-----------	-----------	-----------	----------	----------

DIMENSIONS INCHES / MM

D	W	H
15 / 381	48 / 1219	37 / 940
15 / 381	54 / 1372	37 / 940
15 / 381	60 / 1524	37 / 940
15 / 381	66 / 1676	37 / 940
15 / 381	72 / 1829	37 / 940
15 / 381	78 / 1981	37 / 940
15 / 381	84 / 2134	37 / 940
15 / 381	48 / 1219	43 / 1093
15 / 381	54 / 1372	43 / 1093
15 / 381	60 / 1524	43 / 1093
15 / 381	66 / 1676	43 / 1093
15 / 381	72 / 1829	43 / 1093
15 / 381	78 / 1981	43 / 1093
15 / 381	84 / 2134	43 / 1093

PRICING

1" (D)		1 3/16" (M)		1 9/16" (X)	
DOOR FRONT FINISH					
Source Laminate	Foundation Laminate	Source Laminate	Foundation Laminate	Source Laminate	Foundation Laminate
1664	1739	1664	1739	1664	1739
1685	1766	1685	1766	1685	1766
1699	1792	1699	1792	1699	1792
1770	1848	1770	1848	1770	1848
1838	1948	1838	1948	1838	1948
1997	2109	1997	2109	1997	2109
2014	2127	2014	2127	2014	2127
1816	1891	1816	1891	1816	1891
1836	1917	1836	1917	1836	1917
1848	1944	1848	1944	1848	1944
1936	2009	1936	2009	1936	2009
2006	2122	2006	2122	2006	2122
2171	2290	2171	2290	2171	2290
2198	2318	2198	2318	2198	2318