



This cabinet mounts directly on building walls and offers overhead storage capabilities when use in conjunction over freestanding storage.

**WHAT'S INCLUDED**

1 cabinet, 1 adjustable shelf, 1 wall support, mounting hardware, locks and keys (as specified).

**WHAT'S EXCLUDED**

Linear LED Light.

**NOTES**

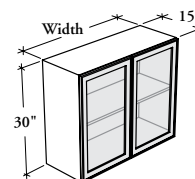
The wall support creates a 3/4" gap from the wall.

This product has **no** pulls.

This product is **not** designed to be used over desks or pedestals.

**Not all door finishes** are available as Xpress, Please see Xpress catalogue and/or specification software for details.

**B W S D G**  
**Standard Wall Cabinet –**  
**Glass Doors**



**PRODUCT OPTIONS**

Depth	Width	Height	Case Finish	Door Frame Finish	Glass Door Finish	Key Style
15	24, 27, 30, 33, 36, 39, 42	30	Source Laminate	AC Clear Anodized Foundation Accent Mica	Standard: CL Clear FT Frosted Back-Painted	N No Lock K Keyed Alike R Keyed Randomly

**SAMPLE ORDER CODE**

<b>BWSDG 15</b>	<b>24</b>	<b>30</b>	<b>3D</b>	<b>E</b>	<b>CL</b>	<b>N</b>
-----------------	-----------	-----------	-----------	----------	-----------	----------

**DIMENSIONS**  
**INCHES / MM**

D	W	H
15 / 381	24 / 610	30 / 762
15 / 381	27 / 686	30 / 762
15 / 381	30 / 762	30 / 762
15 / 381	33 / 838	30 / 762
15 / 381	36 / 914	30 / 762
15 / 381	39 / 991	30 / 762
15 / 381	42 / 1067	30 / 762

**PRICING**

CLEAR GLASS (CL)	FROSTED GLASS (FT)/ BACK-PAINTED GLASS
1882	2147
1923	2197
1953	2236
2001	2292
2039	2342
2138	2449
2235	2552

**KEY UPCHARGE**

Keyed Alike or Keyed Randomly
55
55
55
55
55
55
55