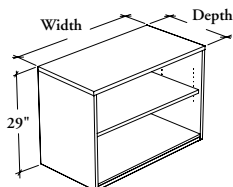


freestanding storage & accessories

Xpress

BSOBT

Bookcase with Integral Worksurface



This storage provides open storage space within the workstation. It includes a finished top and can be fitted with a 29" high worksurface of a desk.

WHAT'S INCLUDED

1 open bookcase integral worksurface, 1 adjustable shelf and levelers.

NOTES

Holes at 1 1/4" intervals on the inside of side panels allow for shelf adjustment.

Additional shelves (BSHE) are available and must be specified separately.

Allows two rows of standard letter-size binders.

The 1 9/16" (X) thickness is **not** available in all Foundation Laminate and Edge Trim colors. Refer to the finish page of the Application Guide for details.

Not all finishes are available as Xpress, Please see Xpress catalogue and/or specification software for details.

PRODUCT OPTIONS

Worksurface Thickness	Depth	Width	Height	Worksurface Finish	Edge Trim Style	Edge Trim Finish	Case Finish
M 1 3/16"	20, 24, 27	24, 30, 36	29	Foundation Laminate Flintwood (No Cathedral)	6 Straight Trim	Edge Trim Colors (for trim style 6)	Source Laminate Flintwood (No Cathedral)
X 1 9/16"					9 Flintwood Flat Trim		

SAMPLE ORDER CODE

BSOBT M	20	36	29	RV	6	SS	XG
----------------	-----------	-----------	-----------	-----------	----------	-----------	-----------

DIMENSIONS INCHES / MM

D	W	H
20 / 508	24 / 610	29 / 737
20 / 508	30 / 762	29 / 737
20 / 508	36 / 914	29 / 737
24 / 610	24 / 610	29 / 737
24 / 610	30 / 762	29 / 737
24 / 610	36 / 914	29 / 737
27 / 686	24 / 610	29 / 737
27 / 686	30 / 762	29 / 737
27 / 686	36 / 914	29 / 737

PRICING

1 3/16" (M)		
FOUNDATION LAMINATE WORKSURFACE FINISH		FLINTWOOD WORKSURFACE FINISH
CASE FINISH		
	Source Laminate	Flintwood
	818	1384
	905	1535
	999	1681
	947	1538
	1042	1697
	1141	1864
	1010	1615
	1110	1779
	1215	1955
		2950
		3155
		3467
		3290
		3524
		3866
		3459
		3709
		4067

Pricing is continued on the following page.

B S O B T
Bookcase with Integral Worksurface
(Continued)

DIMENSIONS
INCHES / MM

D	W	H
20 / 508	24 / 610	29 / 737
20 / 508	30 / 762	29 / 737
20 / 508	36 / 914	29 / 737
24 / 610	24 / 610	29 / 737
24 / 610	30 / 762	29 / 737
24 / 610	36 / 914	29 / 737
27 / 686	24 / 610	29 / 737
27 / 686	30 / 762	29 / 737
27 / 686	36 / 914	29 / 737

PRICING

1 9/16" (X)		
FOUNDATION LAMINATE WORKSURFACE FINISH		FLINTWOOD WORKSURFACE FINISH
CASE FINISH		
	Source Laminate	Source Laminate Flintwood
	853	1457 2985
	951	1627 3202
	1060	1801 3529
	1009	1663 3354
	1112	1839 3596
	1217	2013 3943
	1087	1769 3537
	1194	1946 3792
	1296	2119 4149