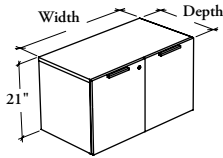


workwall storage

Xpress

B S M D 

Workwall Cabinet – Mid – 21" h



Pulls (P)

This against the wall storage unit provides additional closed storage space with a full-height adjustable shelf. Partially open back provides wall accessibility for electricity management.

WHAT'S INCLUDED

1 workwall cabinet with levelers, 1 adjustable shelf, pulls (as specified), lock and keys (as specified).

WHAT'S EXCLUDED

Seat Pad/Cushion and Wall Panels.

NOTES

Holes at 1 1/4" intervals on the inside of side panels allow for shelf adjustment.

Additional shelves **cannot** be specified with this product.

Edge trim finish on door front always match door front finish (Source Laminate).

Not all finishes are available as Xpress, Please see Xpress catalogue and/or specification software for details.

PRODUCT OPTIONS

| Storage Style | Depth | Width | Height | Door Front Finish | Case Finish | Pull Style | Pull Finish | Key Style |
|---------------|--------|------------|--------|--|--|---------------|--------------------|---|
| P Pulls | 20, 24 | 24, 30, 36 | 21 | Source Laminate Flintwood (No Cathedral) | Source Laminate Flintwood (No Cathedral) | 9 Rectilinear | Foundation Mica | K Keyed Alike R Keyed Randomly N No Lock |

SAMPLE ORDER CODE

| | | | | | | | | |
|---------------|-----------|-----------|-----------|-----------|-----------|----------|-----------|----------|
| BSMD P | 20 | 30 | 21 | XS | LE | 9 | 52 | R |
|---------------|-----------|-----------|-----------|-----------|-----------|----------|-----------|----------|

DIMENSIONS
INCHES / MM

| D | W | H |
|----------|----------|----------|
| 20 / 508 | 24 / 610 | 21 / 533 |
| 20 / 508 | 30 / 762 | 21 / 533 |
| 20 / 508 | 36 / 914 | 21 / 533 |
| 24 / 610 | 24 / 610 | 21 / 533 |
| 24 / 610 | 30 / 762 | 21 / 533 |
| 24 / 610 | 36 / 914 | 21 / 533 |

PRICING

| SOURCE LAMINATE DOOR FINISH | | FLINTWOOD DOOR FINISH | |
|-----------------------------|-----------------|-----------------------|-----------|
| CASE FINISH | | | |
| | Source Laminate | Source Laminate | Flintwood |
| | 1022 | 1549 | 3518 |
| | 1157 | 1723 | 3744 |
| | 1231 | 1836 | 3970 |
| | 1110 | 1637 | 3707 |
| | 1240 | 1806 | 3965 |
| | 1309 | 1914 | 4222 |

