

This cabinet is a lockable mounted storage unit that supplies overhead storage in a variety of widths.

WHAT'S INCLUDED

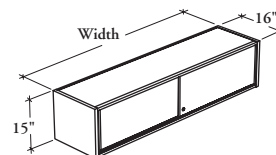
1 overhead cabinet, wall-mounted supports when specified, 2 sliding doors, 2 sliding door pulls, 1 divider (54" to 84" only), lock and keys.

WHAT'S EXCLUDED

Wall Panel for Overhead Cabinet (B_WPO, if applicable), Top for Overhead Cabinet (B_OT) and accessories (BTU, BLTY, BLED, BOTB, and TBK6S).

NOTES

For the Wall Panel Mounted Style, specify the width according to the width of the Wall Panel for Overhead.



BOSL

Overhead Cabinet – Solid Sliding Doors

PRODUCT OPTIONS

Mounting Style	Depth	Width	Height	Sliding Door Finish	Edge Trim Finish (For Source Lam. Fronts only)	Case Finish	Shelf Finish	Pull Finish	Key Style
B Wall Panel Mounted	16	30, 36, 42, 48, 54, 60, 66, 72, 78, 84	15	Source Laminate	Edge Trim Colors	Source Laminate	Foundation Mica Coordinate Colors	Foundation Mica	N No Lock
W Wall-Mounted				Flintwood (No Cathedral)		Flintwood (No Cathedral)			K Keyed Alike R Keyed Randomly

SAMPLE ORDER CODE

BOSL B	16	84	15	XS	ST	XS	7	7	N
---------------	-----------	-----------	-----------	-----------	-----------	-----------	----------	----------	----------

**DIMENSIONS
INCHES / MM**

D	W	H
16 / 406	30 / 762	15 / 381
16 / 406	36 / 914	15 / 381
16 / 406	42 / 1067	15 / 381
16 / 406	48 / 1219	15 / 381
16 / 406	54 / 1372	15 / 381
16 / 406	60 / 1524	15 / 381
16 / 406	66 / 1676	15 / 381
16 / 406	72 / 1829	15 / 381
16 / 406	78 / 1981	15 / 381
16 / 406	84 / 2134	15 / 381

PRICING

SOURCE LAMINATE CASE FINISH		FLINTWOOD CASE FINISH
DOOR FRONT FINISH		
Source Laminate	Flintwood	Flintwood
927	1086	1682
1070	1331	1951
1142	1500	2143
1221	1625	2309
1379	1875	2601
1459	2052	2818
1535	2176	2967
1589	2336	3149
1657	2493	3329
1728	2681	3557