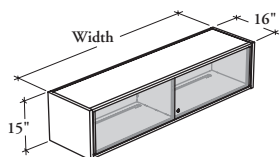


mounted storage & accessories

B O S G

Overhead Cabinet – Sliding Glass Doors



This cabinet is a lockable mounted storage unit that supplies overhead storage in a variety of widths.

WHAT'S INCLUDED

1 overhead cabinet, wall-mounted supports when specified, 2 sliding doors, 2 sliding door pulls, 1 divider (54" to 84" only), lock and keys.

WHAT'S EXCLUDED

Wall Panel for Overhead Cabinet (B_WPO, if applicable), Top for Overhead Cabinet (B_OT), and accessories (BTU, BLTY, BLED, BOTB, and TBK6S).

NOTES

For the Wall Panel Mounted Style, specify the width according to the width of the Wall Panel for Overhead.

PRODUCT OPTIONS

| Mounting Style | Depth | Width | Height | Case Finish | Glass Door Finish | Shelf Finish | Pull Finish | Key Style |
|--------------------------------|-------|--|--------|--|---|---|--------------------|---|
| B Wall Panel Mounted | 16 | 30, 36, 42, 48, 54, 60, 66, 72, 78, 84 | 15 | Source Laminate Flintwood (No Cathedral) | Standard: CL Clear FT Frosted Back-Painted | Foundation Mica Coordinate Colors | Foundation Mica | N No Lock K Keyed Alike R Keyed Randomly |
| W Wall-Mounted | | | | | | | | |

SAMPLE ORDER CODE

| | | | | | | | | |
|---------------|-----------|-----------|-----------|-----------|-----------|----------|----------|----------|
| BOSG B | 16 | 84 | 15 | XS | CL | 7 | 7 | K |
|---------------|-----------|-----------|-----------|-----------|-----------|----------|----------|----------|

DIMENSIONS INCHES / MM

| D | W | H |
|----------|-----------|----------|
| 16 / 406 | 30 / 762 | 15 / 381 |
| 16 / 406 | 36 / 914 | 15 / 381 |
| 16 / 406 | 42 / 1067 | 15 / 381 |
| 16 / 406 | 48 / 1219 | 15 / 381 |
| 16 / 406 | 54 / 1372 | 15 / 381 |
| 16 / 406 | 60 / 1524 | 15 / 381 |
| 16 / 406 | 66 / 1676 | 15 / 381 |
| 16 / 406 | 72 / 1829 | 15 / 381 |
| 16 / 406 | 78 / 1981 | 15 / 381 |
| 16 / 406 | 84 / 2134 | 15 / 381 |

PRICING

SOURCE LAMINATE CASE FINISH

GLASS DOOR FRONT FINISH

| Clear Glass (CL) | Frosted Glass (FT) / Back-Painted Glass |
|------------------|--|
| 1003 | 1079 |
| 1074 | 1166 |
| 1137 | 1243 |
| 1208 | 1324 |
| 1358 | 1490 |
| 1427 | 1576 |
| 1497 | 1661 |
| 1551 | 1749 |
| 1619 | 1835 |
| 1690 | 1922 |

FLINTWOOD CASE FINISH

| Clear Glass (CL) | Frosted Glass (FT) / Back-Painted Glass |
|------------------|--|
| 1600 | 1676 |
| 1693 | 1785 |
| 1780 | 1886 |
| 1893 | 2009 |
| 2084 | 2216 |
| 2194 | 2343 |
| 2287 | 2451 |
| 2363 | 2561 |
| 2455 | 2671 |
| 2568 | 2800 |