

mounted storage & accessories

Xpress

B O S F

Overhead Cabinet – Solid Flipper Door(s)

This cabinet is a lockable mounted storage unit that supplies overhead storage in a variety of widths.

WHAT'S INCLUDED

1 overhead cabinet, wall-mounted supports (as specified), pulls, lock and keys (as specified), and components as listed below:

	Widths	
	24" to 48"	54" to 84"
Door	1	2
Divider	n/a	1

WHAT'S EXCLUDED

Wall Panel for Overhead Cabinet (B_WCC), Wall Panel for Overhead Cabinet and Shelf (B_WCO), and accessories (BLEDD or BLEDS).

NOTES

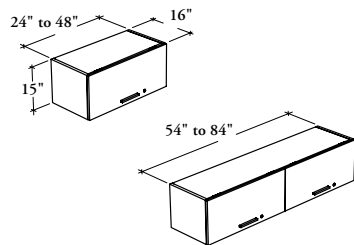
For the Wall Panel Mounting Style (B), specify the width according to the width of the Wall Panel for Overhead Cabinet.

When Linear LED Light Ready (L) option is specified, 24" width is **not** available.

When Linear LED Light Ready (L) option is specified, a Support for Linear LED Light – Overhead (BLEDS) must be ordered separately.

Top for Overhead Cabinet (B_OT) **cannot** be installed on this product.

Edge Trim finish on Door Front always match Door Front finish (Source or Foundation Laminate).



PRODUCT OPTIONS

Mounting Style	Depth	Width	Height	Light Management
B Wall Panel Mounted	16	24, 30, 36, 42, 48, 54, 60, 66, 72, 78, 84	15	L Linear LED Light Ready
W Wall-Mounted				N No Light Management

SAMPLE ORDER CODE

BOSF B	16	78	15	L
---------------	-----------	-----------	-----------	----------

PRODUCT OPTIONS CONTINUED

Door Front Finish	Case Finish	Pull Style	Pull Finish	Key Style
Source Laminate	Source Laminate	1 Standard Expansion	Foundation	N No Lock
Foundation Laminate		6 Arched	Mica	K Keyed Alike
		9 Rectilinear		R Keyed Randomly

SAMPLE ORDER CODE CONTINUED

XS	XS	9	52	R
-----------	-----------	----------	-----------	----------

See Pricing on the following page.

B O S F
Overhead Cabinet –
Solid Flipper Door(s) (Continued)

DIMENSIONS
INCHES / MM

D	W	H
16 / 406	24 / 610	15 / 381
16 / 406	30 / 762	15 / 381
16 / 406	36 / 914	15 / 381
16 / 406	42 / 1067	15 / 381
16 / 406	48 / 1219	15 / 381
16 / 406	54 / 1372	15 / 381
16 / 406	60 / 1524	15 / 381
16 / 406	66 / 1676	15 / 381
16 / 406	72 / 1829	15 / 381
16 / 406	78 / 1981	15 / 381
16 / 406	84 / 2134	15 / 381

PRICING

Source Laminate	Foundation Laminate
966	1023
1023	1063
1089	1137
1151	1234
1177	1278
1420	1536
1456	1578
1517	1653
1557	1709
1641	1782
1684	1857