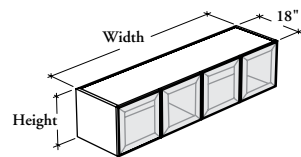


mounted storage & accessories

Xpress

B O K G

Cubic Overhead Cabinet – Glass Hinged Doors



The width and height of this cabinet have been adapted to provide a cubic aesthetic. In addition, the mounting style and depth will ensure a flush front look when used beside a freestanding or mounted tower.

WHAT'S INCLUDED

1 overhead cabinet, locks and keys (as specified), and components as listed below:

| | Widths | | |
|------------|--------|-----|-----|
| | 36" | 54" | 72" |
| Cubic Door | 2 | 3 | 4 |
| Divider | n/a | 1 | 1 |

WHAT'S EXCLUDED

Wall Panel for Overhead Cabinet (B_WPO) and accessories (BLYTU, BLED, and BOTB).

NOTES

For the Wall Panel Mounted Style, specify the width according to the width of the Wall Panel for Overhead.

Top for Overhead Cabinet (B_OT) **cannot** be installed on this product.

Not all glass finishes are available as Xpress, Please see Xpress catalogue and/or specification software for details.

PRODUCT OPTIONS

| Mounting Style | Depth | Width | Height | Case Finish |
|-----------------------------|-------|------------|--------|--|
| B Wall Panel Mounted | 18 | 36, 54, 72 | 16, 18 | Source Laminate Flintwood (No Cathedral) |

SAMPLE ORDER CODE

| | | | | |
|---------------|-----------|-----------|-----------|-----------|
| BOKG B | 18 | 72 | 16 | XS |
|---------------|-----------|-----------|-----------|-----------|

PRODUCT OPTIONS CONTINUED

| Door Frame Finish | Glass Door Finish | Shelf Finish | Key Style |
|--|--|---|---|
| AC Clear Anodized Foundation Accent Mica | Standard: CL Clear FT Frosted Back-Painted | Foundation Mica Coordinate Colors | N No Lock K Keyed Alike R Keyed Randomly |

SAMPLE ORDER CODE CONTINUED

| | | | |
|-----------|-----------|----------|----------|
| AC | FT | Q | N |
|-----------|-----------|----------|----------|

See Pricing on the following page.

B O K G

**Cubic Overhead Cabinet –
Glass Hinged Doors (Continued)**

**DIMENSIONS
INCHES / MM**

| D | W | H |
|----------|-----------|----------|
| 18 / 457 | 36 / 914 | 16 / 406 |
| 18 / 457 | 54 / 1372 | 16 / 406 |
| 18 / 457 | 72 / 1829 | 16 / 406 |
| 18 / 457 | 36 / 914 | 18 / 457 |
| 18 / 457 | 54 / 1372 | 18 / 457 |
| 18 / 457 | 72 / 1829 | 18 / 457 |

PRICING

CLEAR GLASS DOORS (CL)

CASE FINISH

| Source Laminate | Flintwood |
|-----------------|-----------|
| 1312 | 2117 |
| 1856 | 2856 |
| 2246 | 3465 |
| 1404 | 2263 |
| 1986 | 3057 |
| 2405 | 3709 |

**FROSTED GLASS (FT) /
BACK-PAINTED GLASS DOORS**

| Source Laminate | Flintwood |
|-----------------|-----------|
| 1517 | 2322 |
| 2145 | 3145 |
| 2587 | 3806 |
| 1626 | 2485 |
| 2295 | 3366 |
| 2772 | 4076 |

KEY UPCHARGE

| |
|-------------------------------|
| Keyed Alike or Keyed Randomly |
| 55 |
| 115 |
| 115 |
| 55 |
| 115 |
| 115 |