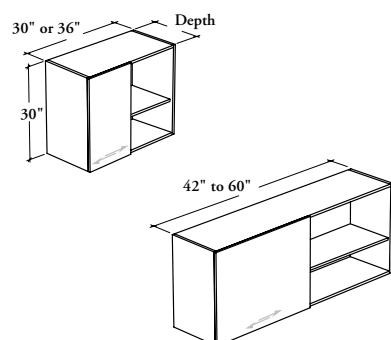


mounted storage & accessories

Xpress

BODSS

Double Overhead Cabinet – Solid Overlay Sliding Door



This cabinet is a mounted storage unit that supplies double overhead storage in a variety of widths.

WHAT'S INCLUDED

1 double overhead cabinet, wall-mounted supports (as specified), 1 overlay sliding door, 1 fixed-height shelf per compartment and 1 divider (54" and 60" only).

WHAT'S EXCLUDED

Wall Panel for Overhead Cabinet (B_WCC), Wall Panel for Overhead Cabinet and Shelf (B_WCO) and accessories (BLEDD or BLEDS).

NOTES

For the Wall Panel Mounting Style (B), specify the width according to the width of the Wall Panel for Overhead Cabinet.

When Wall-Mounted (W) option is specified, only 16" depth is available.

Top for Overhead Cabinet (B_OT) **cannot** be installed on this product.

When Linear LED Light Ready (L) option is specified, a Support for Linear LED Light – Overhead (BLEDS) must be ordered separately.

Edge Trim finish on Overlay Door Front always match Overlay Door Front finish (Source Laminate).

Not all finishes are available as Xpress, Please see Xpress catalogue and/or specification software for details.

PRODUCT OPTIONS

Mounting Style	Configuration	Depth	Width	Height
B Wall Panel Mounted W Wall-Mounted	O One Door	16, 18	30, 36, 42, 48, 54, 60	30

SAMPLE ORDER CODE

BODSS B	O	18	60	30
----------------	----------	-----------	-----------	-----------

PRODUCT OPTIONS CONTINUED

Orientation	Light Management	Overlay Door Finish	Case Finish	Key Style
L Overlay Door on Left (Shown) R Overlay Door on Right	L Linear LED Light Ready N No Light Management	Source Laminate Flintwood (No Cathedral)	Source Laminate Flintwood (No Cathedral)	N No Lock

SAMPLE ORDER CODE CONTINUED

L	L	XS	XS	N
----------	----------	-----------	-----------	----------

See Pricing on the following page.

B O D S S

Overhead Cabinet –
Solid Overlay Sliding Door (Continued)

DIMENSIONS
INCHES / MM

D	W	H
16 / 406	30 / 762	30 / 762
16 / 406	36 / 914	30 / 762
16 / 406	42 / 1067	30 / 762
16 / 406	48 / 1219	30 / 762
16 / 406	54 / 1372	30 / 762
16 / 406	60 / 1524	30 / 762
18 / 457	30 / 762	30 / 762
18 / 457	36 / 914	30 / 762
18 / 457	42 / 1067	30 / 762
18 / 457	48 / 1219	30 / 762
18 / 457	54 / 1372	30 / 762
18 / 457	60 / 1524	30 / 762

PRICING

ONE DOOR (O)		
SOURCE LAMINATE CASE FINISH		FLINTWOOD CASE FINISH
OVERLAY DOOR FRONT FINISH		
Source Laminate	Flintwood	Flintwood
1077	1318	3057
1143	1394	3268
1225	1489	3447
1318	1589	3729
1412	1690	4013
1518	1811	4315
1077	1318	3057
1143	1394	3268
1225	1489	3447
1318	1589	3729
1412	1690	4013
1518	1811	4315