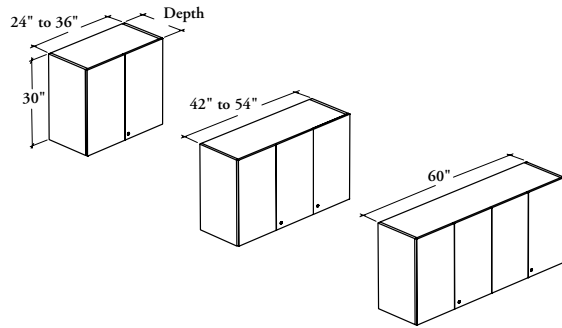


mounted storage & accessories

Xpress

BODSH 

Double Overhead Cabinet – Solid Hinged Doors



This cabinet is a lockable mounted storage unit that supplies double overhead storage in a variety of widths.

WHAT'S INCLUDED

1 double overhead cabinet, wall-mounted supports (as specified), locks and keys (as specified), and components as listed below:

	Widths			
	24" to 36"	42" to 54"	60"	
Door	2	3	4	
Divider	n/a	1	1	
Adjustable Shelf	1	1	1	per compartment

WHAT'S EXCLUDED

Wall Panel for Overhead Cabinet (B_WCC), Wall Panel for Overhead Cabinet and Shelf (B_WCO), Top for Overhead Cabinet (B_OT), and accessories (BLEDD or BLEDS).

NOTES

For the Wall Panel Mounting Style (B), specify the width according to the width of the Wall Panel for Overhead Cabinet.

When Wall-Mounted (W) option is specified, only 16" depth is available.

When Linear LED Light Ready (L) option is specified, 24" width is **not** available.

When Linear LED Light Ready (L) option is specified, a Support for Linear LED Light – Overhead (BLEDS) must be ordered separately.

The shelf has an eleven positions adjustment with 1 1/4" intervals.

Edge Trim finish on Door Front always match Door Front finish (Source or Foundation Laminate).

Not all finishes are available as Xpress, Please see Xpress catalogue and/or specification software for details.

PRODUCT OPTIONS

Mounting Style	Depth	Width	Height
B Wall Panel Mounted	16, 18	24, 30, 36, 42, 48, 54, 60	30
W Wall-Mounted			

SAMPLE ORDER CODE

BODSH B	18	54	30
----------------	-----------	-----------	-----------

PRODUCT OPTIONS CONTINUED

Light Management	Door Front Finish	Case Finish	Key Style
L Linear LED Light Ready	Source Laminate	Source Laminate	N No Lock
N No Light Management	Foundation Laminate Flintwood (No Cathedral)	Flintwood (No Cathedral)	K Keyed Alike R Keyed Randomly

SAMPLE ORDER CODE CONTINUED

L	XS	XS	K
----------	-----------	-----------	----------

See Pricing on the following page.



**Double Overhead Cabinet –
Solid Hinged Doors (Continued)**

**DIMENSIONS
INCHES / MM**

D	W	H
16 / 406	24 / 610	30 / 762
16 / 406	30 / 762	30 / 762
16 / 406	36 / 914	30 / 762
16 / 406	42 / 1067	30 / 762
16 / 406	48 / 1219	30 / 762
16 / 406	54 / 1372	30 / 762
16 / 406	60 / 1524	30 / 762
<hr/>		
18 / 457	24 / 610	30 / 762
18 / 457	30 / 762	30 / 762
18 / 457	36 / 914	30 / 762
18 / 457	42 / 1067	30 / 762
18 / 457	48 / 1219	30 / 762
18 / 457	54 / 1372	30 / 762
18 / 457	60 / 1524	30 / 762

PRICING

SOURCE LAMINATE CASE FINISH			FLINTWOOD CASE FINISH
DOOR FRONT FINISH			
Source Laminate	Foundation Laminate	Flintwood	Flintwood
983	1061	1391	2934
1051	1151	1723	3396
1119	1245	2041	3844
1333	1383	2379	4264
1385	1551	2663	4723
1436	1618	2962	5197
1624	1822	3284	5694
<hr/>			
983	1061	1391	2934
1051	1151	1723	3396
1119	1245	2041	3844
1333	1383	2379	4264
1385	1551	2663	4723
1436	1618	2962	5197
1624	1822	3284	5694