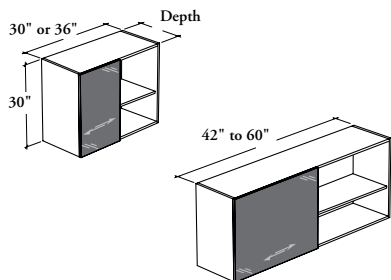


mounted storage & accessories

BODGS

Double Overhead Cabinet – Glass Overlay Sliding Door



This cabinet is a lockable mounted storage unit that supplies double overhead storage in a variety of widths.

WHAT'S INCLUDED

1 double overhead cabinet, wall-mounted supports (as specified), 1 overlay sliding door, 1 fixed-height shelf per compartment and 1 divider (54" and 60" only).

WHAT'S EXCLUDED

Wall Panel for Overhead Cabinet (B_WCC), Wall Panel for Overhead Cabinet and Shelf (B_WCO) and accessories (BLEDD or BLEDS).

NOTES

For the Wall Panel Mounting Style (B), specify the width according to the width of the Wall Panel for Overhead Cabinet.

When Wall-Mounted (W) option is specified, only 16" depth is available.

Top for Overhead Cabinet (B_OT) **cannot** be installed on this product.

When Linear LED Light Ready (L) option is specified, a Support for Linear LED Light – Overhead (BLEDS) must be ordered separately.

PRODUCT OPTIONS

Mounting Style	Configuration	Depth	Width	Height	Orientation
B Wall Panel Mounted W Wall-Mounted	O One Door	16, 18	30, 36, 42, 48, 54, 60	30	L Overlay Door on Left (Shown) R Overlay Door on Right

SAMPLE ORDER CODE

BODGS B	O	18	42	30	L
----------------	----------	-----------	-----------	-----------	----------

PRODUCT OPTIONS CONTINUED

Light Management	Case Finish	Overlay Door Frame Finish	Overlay Door Finish	Key Style
L Linear LED Light Ready N No Light Management	Source Laminate Flintwood (No Cathedral)	Foundation Accent Mica	Back-Painted	N No Lock

SAMPLE ORDER CODE CONTINUED

L	XS	74	K1	N
----------	-----------	-----------	-----------	----------

See Pricing on the following page.

B O D G S
Double Overhead Cabinet –
Glass Overlay Sliding Door
(Continued)

DIMENSIONS
INCHES / MM

D	W	H
16 / 406	30 / 762	30 / 762
16 / 406	36 / 914	30 / 762
16 / 406	42 / 1067	30 / 762
16 / 406	48 / 1219	30 / 762
16 / 406	54 / 1372	30 / 762
16 / 406	60 / 1524	30 / 762
18 / 457	30 / 762	30 / 762
18 / 457	36 / 914	30 / 762
18 / 457	42 / 1067	30 / 762
18 / 457	48 / 1219	30 / 762
18 / 457	54 / 1372	30 / 762
18 / 457	60 / 1524	30 / 762

PRICING

ONE DOOR (O)	
SOURCE LAMINATE CASE FINISH	FLINTWOOD CASE FINISH
OVERLAY DOOR FINISH	
Back-Painted Glass	Back-Painted Glass
1486	3159
1552	3355
1644	3529
1744	3804
1843	4078
1959	4369
1486	3159
1552	3355
1644	3529
1744	3804
1843	4078
1959	4369