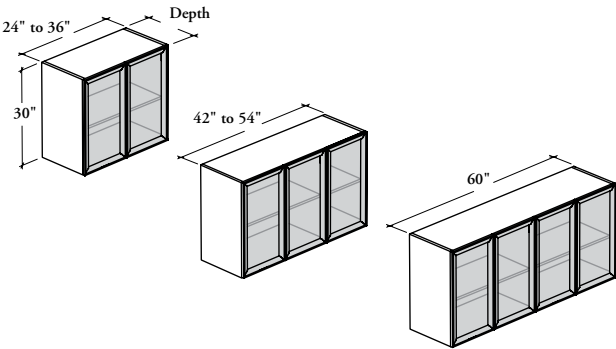


Xpress

BODGH

Double Overhead Cabinet – Glass Hinged Doors



This cabinet is a lockable mounted storage unit that supplies double overhead storage in a variety of widths.

WHAT'S INCLUDED

1 double overhead cabinet, wall-mounted supports (as specified), locks and keys (as specified), and components as listed below:

	Widths		
	24" to 36"	42" to 54"	60"
Door	2	3	4
Divider	n/a	1	1
Adjustable Shelf	1	1	1 per compartment

WHAT'S EXCLUDED

Wall Panel for Overhead Cabinet (B_WCC), Wall Panel for Overhead Cabinet and Shelf (B_WCO), Top for Overhead Cabinet (B_OT), and accessories (BLEDD or BLEDS).

NOTES

For the Wall Panel Mounting Style (B), specify the width according to the width of the Wall Panel for Overhead Cabinet.

When Wall-Mounted (W) option is specified, only 16" depth is available.

When Linear LED Light Ready (L) option is specified, 24" width is **not** available.

When Linear LED Light Ready (L) option is specified, a Support for Linear LED Light – Overhead (BLEDS) must be ordered separately.

The shelf has a eleven positions adjustment with 1 1/4" intervals.

Not all glass finishes are available as Xpress, Please see Xpress catalogue and/or specification software for details.

PRODUCT OPTIONS

Mounting Style	Depth	Width	Height	Light Management
B Wall Panel Mounted W Wall-Mounted	16, 18	24, 30, 36, 42, 48, 54, 60	30	L Linear LED Light Ready N No Light Management

SAMPLE ORDER CODE

BODGH W	16	60	30	L
---------	----	----	----	---

PRODUCT OPTIONS CONTINUED

Case Finish	Door Frame Finish	Glass Door Finish	Key Style
Source Laminate Flintwood (No Cathedral)	AC Clear Anodized Foundation Accent Mica	Standard: CL Clear FT Frosted Back-Painted	N No Lock K Keyed Alike R Keyed Randomly

SAMPLE ORDER CODE CONTINUED

XS	AC	FT	N
----	----	----	---

See Pricing on the following page.

B O D G H

Double Overhead Cabinet –
Glass Hinged Doors (Continued)DIMENSIONS
INCHES / MM

D	W	H
16 / 406	24 / 610	30 / 762
16 / 406	30 / 762	30 / 762
16 / 406	36 / 914	30 / 762
16 / 406	42 / 1067	30 / 762
16 / 406	48 / 1219	30 / 762
16 / 406	54 / 1372	30 / 762
16 / 406	60 / 1524	30 / 762
18 / 457	24 / 610	30 / 762
18 / 457	30 / 762	30 / 762
18 / 457	36 / 914	30 / 762
18 / 457	42 / 1067	30 / 762
18 / 457	48 / 1219	30 / 762
18 / 457	54 / 1372	30 / 762
18 / 457	60 / 1524	30 / 762

PRICING

SOURCE LAMINATE CASE FINISH

GLASS DOOR FRONT FINISH

Clear Glass (CL)	Frosted Glass (FT) / Back-Painted Glass
1588	1966
1751	2169
1913	2345
2489	3004
2595	3152
2701	3302
3191	3833
1588	1966
1751	2169
1913	2345
2489	3004
2595	3152
2701	3302
3191	3833

FLINTWOOD CASE FINISH

Clear Glass (CL)	Frosted Glass (FT) / Back-Painted Glass
3191	3569
3489	3907
3786	4218
4448	4963
4736	5293
5024	5625
5695	6337
3191	3569
3489	3907
3786	4218
4448	4963
4736	5293
5024	5625
5695	6337

KEY UPCHARGE

Keyed Alike or Keyed Randomly
57
57
57
119
119
119
119
57
57
57
119
119
119
119