

mounted storage & accessories

BOCSG

Overhead Cabinet – Glass Overlay Sliding Door

This cabinet is a mounted storage unit that supplies overhead storage in a variety of widths.

WHAT'S INCLUDED

1 overhead cabinet, wall-mounted supports when specified, 1 overlay sliding door and 1 divider (54" to 84" only).

WHAT'S EXCLUDED

Wall Panel for Overhead Cabinet (B_WPO, if applicable) and accessories (BLYTU, BLED and BOTB).

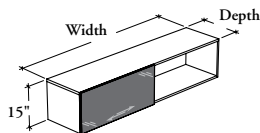
NOTES

For the Wall Panel Mounted Style, specify the width according to the width of the Wall Panel for Overhead.

When Wall Panel Mounted (B) option is specified, only 18" depth is available.

When Wall-Mounted (W) option is specified, only 16" depth is available.

Top for Overhead Cabinet (B_OT) **cannot** be installed on this product.



PRODUCT OPTIONS

Mounting Style	Configuration	Depth	Width	Height
B Wall Panel Mounted W Wall-Mounted	O One Door	16, 18	30, 36, 42, 48, 54, 60, 66, 72, 78, 84	15

SAMPLE ORDER CODE

BOCSG B	O	18	72	15
----------------	----------	-----------	-----------	-----------

PRODUCT OPTIONS CONTINUED

Orientation	Case Finish	Overlay Door Frame Finish	Overlay Door Finish	Key Style
L Overlay Door on Left (Shown) R Overlay Door on Right	Source Laminate Flintwood (No Cathedral)	Foundation Accent Mica	Back-Painted	N No Lock

SAMPLE ORDER CODE CONTINUED

L	XS	Q	K1	N
----------	-----------	----------	-----------	----------

See Pricing on the following page.

BOCSG
Overhead Cabinet –
Glass Overlay Sliding Door (Continued)

DIMENSIONS
INCHES / MM

D	W	H
16 / 406	30 / 762	15 / 381
16 / 406	36 / 914	15 / 381
16 / 406	42 / 1067	15 / 381
16 / 406	48 / 1219	15 / 381
16 / 406	54 / 1372	15 / 381
16 / 406	60 / 1524	15 / 381
16 / 406	66 / 1676	15 / 381
16 / 406	72 / 1829	15 / 381
16 / 406	78 / 1981	15 / 381
16 / 406	84 / 2134	15 / 381
18 / 457	30 / 762	15 / 381
18 / 457	36 / 914	15 / 381
18 / 457	42 / 1067	15 / 381
18 / 457	48 / 1219	15 / 381
18 / 457	54 / 1372	15 / 381
18 / 457	60 / 1524	15 / 381
18 / 457	66 / 1676	15 / 381
18 / 457	72 / 1829	15 / 381
18 / 457	78 / 1981	15 / 381
18 / 457	84 / 2134	15 / 381

PRICING

ONE DOOR (O)	
SOURCE LAMINATE CASE FINISH	FLINTWOOD CASE FINISH
OVERLAY DOOR FINISH	
Back-Painted Glass	Back-Painted Glass
969	2732
1066	2908
1165	3082
1260	3257
1357	3431
1455	3606
1550	3780
1648	3956
1743	4130
1840	4305
969	2732
1066	2908
1165	3082
1260	3257
1357	3431
1455	3606
1550	3780
1648	3956
1743	4130
1840	4305