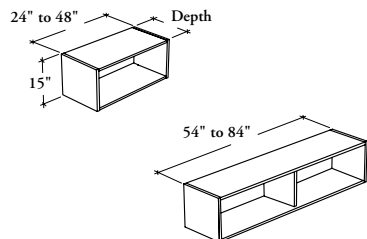


# mounted storage & accessories

Xpress

**BOCOL** 

## Overhead Cabinet – Open



This cabinet is a mounted storage unit that supplies overhead storage in a variety of widths.

### WHAT'S INCLUDED

1 overhead cabinet, wall-mounted supports (as specified) and 1 divider (54" to 84" only).

### WHAT'S EXCLUDED

Wall Panel for Overhead Cabinet (B\_WCC), Wall Panel for Overhead Cabinet and Shelf (B\_WCO), Top for Overhead Cabinet (B\_OT), and accessories (BLEDD or BLEDS).

### NOTES

For the Wall Panel Mounting Style (B), specify the width according to the width of the Wall Panel for Overhead Cabinet.

When Wall-Mounted (W) option is specified, only 16" depth is available.

Top for Overhead Cabinet (B\_OT) **cannot** be installed on this product.

When Linear LED Light Ready (L) option is specified, 24" width is **not** available.

When Linear LED Light Ready (L) option is specified, a Support for Linear LED Light – Overhead (BLEDS) must be ordered separately.

**Not all finishes** are available as Xpress, Please see Xpress catalogue and/or specification software for details.

### PRODUCT OPTIONS

Mounting Style	Depth	Width	Height	Light Management	Case Finish
<b>B</b> Wall Panel Mounted	16, 18	24, 30, 36, 42, 48, 54, 60, 66, 72, 78, 84	15	<b>L</b> Linear LED Light Ready	Source Laminate
<b>W</b> Wall-Mounted				<b>N</b> No Light Management	Flintwood (No Cathedral)

### SAMPLE ORDER CODE

<b>BOCOL W</b>	<b>16</b>	<b>60</b>	<b>15</b>	<b>L</b>	<b>3E</b>
----------------	-----------	-----------	-----------	----------	-----------

### DIMENSIONS INCHES / MM

D	W	H
16 / 406	24 / 610	15 / 381
16 / 406	30 / 762	15 / 381
16 / 406	36 / 914	15 / 381
16 / 406	42 / 1067	15 / 381
16 / 406	48 / 1219	15 / 381
16 / 406	54 / 1372	15 / 381
16 / 406	60 / 1524	15 / 381
16 / 406	66 / 1676	15 / 381
16 / 406	72 / 1829	15 / 381
16 / 406	78 / 1981	15 / 381
16 / 406	84 / 2134	15 / 381
18 / 457	24 / 610	15 / 381
18 / 457	30 / 762	15 / 381
18 / 457	36 / 914	15 / 381
18 / 457	42 / 1067	15 / 381
18 / 457	48 / 1219	15 / 381
18 / 457	54 / 1372	15 / 381
18 / 457	60 / 1524	15 / 381
18 / 457	66 / 1676	15 / 381
18 / 457	72 / 1829	15 / 381
18 / 457	78 / 1981	15 / 381
18 / 457	84 / 2134	15 / 381

### PRICING

Source Laminate	Flintwood
689	1805
718	1895
761	2010
804	2125
846	2233
889	2544
930	2634
973	2725
1015	2816
1058	2908
1101	2990
689	1805
718	1895
761	2010
804	2125
846	2233
889	2544
930	2634
973	2725
1015	2816
1058	2908
1101	2990

