

mounted storage & accessories

Xpress

BOCG

Overhead Cabinet – Glass Hinged Doors

This cabinet is a lockable mounted storage unit that supplies overhead storage in a variety of widths.

WHAT'S INCLUDED

1 overhead cabinet, wall-mounted supports when specified, locks and keys (as specified), and components as listed below:

	Widths			
	24" to 36"	42" to 54"	60" to 78"	84"
Door	2	3	4	5
Divider	n/a	1	1	2

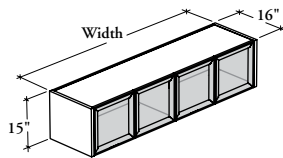
WHAT'S EXCLUDED

Wall Panel for Overhead Cabinet (B_WPO, if applicable), Top for Overhead Cabinet (B_OT), and accessories (BLYTU, BLED and BOTB).

NOTES

For the Wall Panel Mounted Style, specify the width according to the width of the Wall Panel for Overhead.

Not all glass finishes are available as Xpress, Please see Xpress catalogue and/or specification software for details.



PRODUCT OPTIONS

Mounting Style	Depth	Width	Height	Case Finish
B Wall Panel Mounted W Wall-Mounted	16	24, 30, 36, 42, 48, 54, 60, 66, 72, 78, 84	15	Source Laminate Flintwood (No Cathedral)

SAMPLE ORDER CODE

BOCG W	16	84	15	XS
---------------	-----------	-----------	-----------	-----------

PRODUCT OPTIONS CONTINUED

Door Frame Finish	Glass Door Finish	Shelf Finish	Key Style
AC Clear Anodized Foundation Accent Mica	Standard: CL Clear FT Frosted Back-Painted	Foundation Mica Coordinate Colors	N No Lock K Keyed Alike R Keyed Randomly

SAMPLE ORDER CODE CONTINUED

AC	FT	Q	N
-----------	-----------	----------	----------

See Pricing on the following page.

BOCG
Overhead Cabinet –
Glass Hinged Doors (Continued)

DIMENSIONS
INCHES / MM

D	W	H
16 / 406	24 / 610	15 / 381
16 / 406	30 / 762	15 / 381
16 / 406	36 / 914	15 / 381
16 / 406	42 / 1067	15 / 381
16 / 406	48 / 1219	15 / 381
16 / 406	54 / 1372	15 / 381
16 / 406	60 / 1524	15 / 381
16 / 406	66 / 1676	15 / 381
16 / 406	72 / 1829	15 / 381
16 / 406	78 / 1981	15 / 381
16 / 406	84 / 2134	15 / 381

PRICING

SOURCE LAMINATE CASE FINISH

GLASS DOOR FRONT FINISH

Clear Glass (CL)	Frosted Glass (FT) / Back-Painted Glass
1138	1320
1284	1485
1312	1520
1568	1816
1712	1980
1856	2145
2024	2333
2169	2497
2246	2587
2384	2748
2596	2992

FLINTWOOD CASE FINISH

Clear Glass (CL)	Frosted Glass (FT) / Back-Painted Glass
1711	1893
1913	2114
2117	2325
2364	2612
2610	2878
2856	3145
3060	3369
3262	3590
3465	3806
3713	4077
3959	4355

KEY UPCHARGE

Keyed Alike or Keyed Randomly
55
55
55
115
115
115
115
115
115
115
171