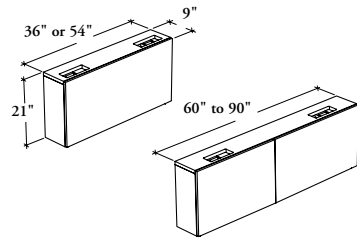


workwall storage

Xpress

B H K H W

Workwall Kneespace Module – Height-Adjustability



This module supports a Height-Adjustable Worksurface to enable users to work facing the wall in a sit/stand position. It must be anchored to a building wall.

WHAT'S INCLUDED

1 workwall kneespace module with levelers, 1 or 2 removable front, and mounting hardware.

WHAT'S EXCLUDED

Height-Adjustable Worksurfaces and Wall Panels.

NOTES

Can be used with:

- Height-Adjustable Rectangular Worksurfaces (BH_RL or BH_RC)
- Height-Adjustable Peninsulas – Bevel Post Leg (BH_RP, BH_TP or BH_PE)
- Height-Adjustable L-Shape Worksurfaces (BH_LB, BH_L or BH_LT)
- Height-Adjustable Meeting Peninsulas (B_HRW, B_HDW, B_HBW or B_HPW)

refer to the Application Guide.

Not all finishes are available as Xpress, Please see Xpress catalogue and/or specification software for details.

PRODUCT OPTIONS

Depth	Width	Height	Front Finish	Edge Trim Finish (Laminate Front only)	Case Finish
9	36, 42, 48, 54, 60, 66, 72, 78, 84, 90	21	Source Laminate Flintwood (No Cathedral)	Edge Trim Colors	Source Laminate Flintwood (No Cathedral)

SAMPLE ORDER CODE

BH KHW 9	72	21	VZ	VZ
-----------------	-----------	-----------	-----------	-----------

**DIMENSIONS
INCHES / MM**

D	W	H
9 / 229	36 / 914	21 / 533
9 / 229	42 / 1067	21 / 533
9 / 229	48 / 1219	21 / 533
9 / 229	54 / 1372	21 / 533
9 / 229	60 / 1524	21 / 533
9 / 229	66 / 1676	21 / 533
9 / 229	72 / 1829	21 / 533
9 / 229	78 / 1981	21 / 533
9 / 229	84 / 2134	21 / 533
9 / 229	90 / 2286	21 / 533

PRICING

SOURCE LAMINATE FRONT FINISH		FLINTWOOD FRONT FINISH	
CASE FINISH			
	Source Laminate	Source Laminate	Flintwood
	1107	1413	2065
	1165	1482	2144
	1199	1551	2223
	1235	1621	2298
	1372	1832	2381
	1426	1958	2465
	1479	2043	2582
	1534	2126	2699
	1586	2210	2816
	1638	2294	2935