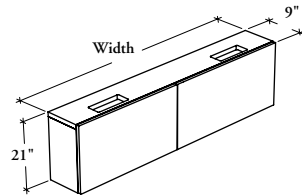


# multi-level workstations

**Xpress**

## B H K H A

### Mid-Height Kneespace Module for Height-Adjustability



This module supports Height-Adjustable Worksurfaces to enable users to work facing the wall in a sit/stand position. It must be anchored to a building wall.

#### WHAT'S INCLUDED

1 mid-height kneespace module with levelers, removable fronts, and mounting hardware.

#### WHAT'S EXCLUDED

Height-Adjustable Rectangular Worksurfaces – Mid-Height, Height-Adjustable Peninsula, Height-Adjustable L-Shape Worksurfaces and Wall Panels.

#### NOTES

Can only be installed with worksurfaces listed below:

- Height-Adjustable Rectangular Worksurface – Mid-Height (BH\_WB or BH\_CB)
- Height-Adjustable Peninsula (BH\_MT or BH\_EP)
- Height-Adjustable L-Shape Worksurfaces (BH\_LB, BH\_L or BH\_LT)

**Not all finishes** are available as Xpress, Please see Xpress catalogue and/or specification software for details.

#### PRODUCT OPTIONS

Depth	Width	Height	Front Finish	Edge Trim Finish (Laminate Front only)	Case Finish
9	42, 48, 54, 60, 66, 72, 78, 84, 90	21	Source Laminate Flintwood (No Cathedral)	Edge Trim Colors	Source Laminate Flintwood (No Cathedral)

#### SAMPLE ORDER CODE

<b>BHKHA 9</b>	<b>72</b>	<b>21</b>	<b>VZ</b>		<b>VZ</b>
----------------	-----------	-----------	-----------	--	-----------

#### DIMENSIONS INCHES / MM

D	W	H
9 / 229	42 / 1067	21 / 533
9 / 229	48 / 1219	21 / 533
9 / 229	54 / 1372	21 / 533
9 / 229	60 / 1524	21 / 533
9 / 229	66 / 1676	21 / 533
9 / 229	72 / 1829	21 / 533
9 / 229	78 / 1981	21 / 533
9 / 229	84 / 2134	21 / 533
9 / 229	90 / 2286	21 / 533

#### PRICING

##### FRONT FINISH

##### SOURCE LAMINATE

##### CASE FINISH

##### Source Laminate

1165
1199
1235
1372
1426
1479
1534
1586
1638

##### FLINTWOOD

##### Source Laminate Flintwood

1482	2144
1551	2223
1621	2298
1832	2381
1958	2465
2043	2582
2126	2699
2210	2816
2294	2935