

This module supports Height-Adjustable Worksurfaces and Fixed Run-Offs to enable users to work facing the wall in a sit/stand position. It must be anchored to a building wall.

WHAT'S INCLUDED

1 mid-height kneespace module with levelers, removable fronts, and mounting hardware.

WHAT'S EXCLUDED

Height-Adjustable Rectangular Worksurfaces – Mid-Height, Fixed Run-Off – Mid-Height and Wall Panels.

NOTES

When 66" width is specified, only 24" Fixed Run-Off depth is available.

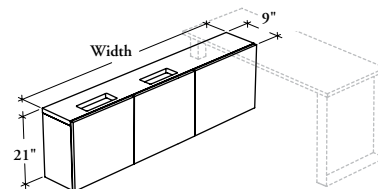
When 72" width is specified, only 24" and 30" Fixed Run-Off depths are available.

Can only be installed with worksurfaces listed below:

- Height-Adjustable Rectangular Worksurface – Mid-Height (BH_WB or BH_CB)
- Fixed Run-Off – Mid-Height (BM_R)

Not all finishes are available as Xpress, Please see Xpress catalogue and/or specification software for details.

B H K F H
Mid-Height Kneespace Module
Height-Adjustability and
Fixed Run-Off



PRODUCT OPTIONS

Depth	Width	Height	Run-Off Depth	Run-Off Configuration	Front Finish	Edge Trim Finish (Laminate Front only)	Case Finish
9	66, 72, 78, 84, 90, 96	21	24, 30, 36	L Left R Right (Shown)	Source Laminate Flintwood (No Cathedral)	Edge Trim Colors	Source Laminate Flintwood (No Cathedral)

SAMPLE ORDER CODE

BHKFH 9	78	21	30	R	VZ	VZ
----------------	-----------	-----------	-----------	----------	-----------	-----------

DIMENSIONS
INCHES / MM

D	W	H
9 / 229	66 / 1676	21 / 533
9 / 229	72 / 1829	21 / 533
9 / 229	78 / 1981	21 / 533
9 / 229	84 / 2134	21 / 533
9 / 229	90 / 2286	21 / 533
9 / 229	96 / 2438	21 / 533

PRICING

FRONT FINISH		
SOURCE LAMINATE	FLINTWOOD	
CASE FINISH		
Source Laminate	Source Laminate	Flintwood
1426	1958	2465
1479	2043	2582
1534	2126	2699
1586	2210	2816
1638	2294	2935
1691	2378	3054