

This tower combines a 2-level open storage compartments and a pigeonhole with removeable metal shelves in a cubic aesthetic. It must always be mounted on a High Secondary Desk.

WHAT'S INCLUDED

66" high configuration: 1 tower with 2 or 4 shelves, 2 or 4 removeable metal shelves or
72" high configuration: 1 tower with 2 or 4 shelves, 3 or 6 removeable metal shelves, and mounting hardware.

WHAT'S EXCLUDED

High Secondary Desks and Multi-Functional Drawer.

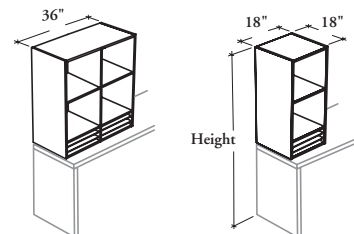
NOTES

This mounted tower **cannot** be used alone. It must be connected to another mounted tower, a freestanding tower, a wall panel or an overhead cabinet in order to ensure stability.

Up to two stacked Multi-Functionnal Drawer (BADMF) can only be installed in the pigeonhole section.

Not all finishes are available as Xpress, Please see Xpress catalogue and/or specification software for details.

BCHOO Cubic Open Tower – High Secondary Desk Mounted



PRODUCT OPTIONS

Depth	Width	Height	Case Finish	Shelf Finish
18	18, 36	66, 72	Source Laminate Flintwood (No Cathedral)	Foundation Mica

SAMPLE ORDER CODE

BCHOO 18	18	72	XS	7
-----------------	-----------	-----------	-----------	----------

CUBE STYLE

PRICING

	Source Laminate	Flintwood
BCHOO181866	629	1897
BCHOO181872	687	1993
BCHOO183666	1023	2698
BCHOO183672	1080	2795