

# mounted storage & accessories

**Xpress**

## BCHG

### Cubic Tower with Glass Doors – High Secondary Desk Mounted

This tower combines a 2-level of closed storage compartments and a pigeonhole with removeable metal shelves in a cubic aesthetic. It must always be mounted on a High Secondary Desk.

#### WHAT'S INCLUDED

1 tower, mounting hardware, locks and keys (as specified), and accessories as listed below:

	Cube Style	
	F	
Cubic Door	2	
Compartment	2	
Removeable Metal Shelf	2	(66" h)
	3	(72" h)

#### WHAT'S EXCLUDED

High Secondary Desks and Multi-Functional Drawer.

#### NOTES

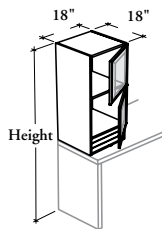
This mounted tower **cannot** be used alone. It must be connected to another mounted tower, a freestanding tower, a wall panel or an overhead cabinet in order to ensure stability.

Up to two stacked Multi-Functionnal Drawer (BADMF) can only be installed in the pigeonhole section.

The removeable metal shelves can be repositioned in the closed section when a Multi-Functional Drawer is installed.

When Clear Anodized for door frame finish is specified, the metal shelves come in Platinum only.

**Not all glass finishes** are available as Xpress, Please see Xpress catalogue and/or specification software for details.



(F) Fully Enclosed

#### PRODUCT OPTIONS

Configuration Style	Depth	Width	Height	Door Swing Direction
F Fully Enclosed	18	18	66, 72	L Left Side R Right Side (Shown)

#### SAMPLE ORDER CODE

<b>BCHG F</b>	<b>18</b>	<b>18</b>	<b>66</b>	<b>L</b>
---------------	-----------	-----------	-----------	----------

#### PRODUCT OPTIONS CONTINUED

Case Finish	Door Frame Finish	Glass Door Finish	Shelf Finish	Key Style
Source Laminate Flintwood (No Cathedral)	AC Clear Anodized Foundation Accent Mica	Standard: CL Clear FT Frosted Back-Painted	Foundation Mica	N No Lock K Keyed Alike R Keyed Randomly

#### SAMPLE ORDER CODE CONTINUED

<b>XS</b>	<b>AC</b>	<b>CL</b>	<b>7</b>	<b>K</b>
-----------	-----------	-----------	----------	----------

See Pricing on the following page.

**B C H G**

**Cubic Tower with Glass Doors –  
High Secondary Desk Mounted (Continued)**

CUBE STYLE	PRICING		KEY UPCHARGE
	<b>CLEAR GLASS DOOR (CL)</b>		
	<b>CASE FINISH</b>		
	Source Laminate	Flintwood	Keyed Alike or Keyed Randomly
BCHGF181866	1457	3216	115
BCHGF181872	1531	3340	115
	<b>FROSTED GLASS (FT) / BACK-PAINTED GLASS DOOR</b>		
	<b>CASE FINISH</b>		
	Source Laminate	Flintwood	
BCHGF181866	1610	3369	115
BCHGF181872	1690	3499	115