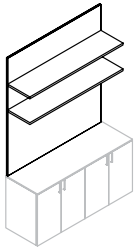


ZJWCL

Wall Panel, Open Shelves Combination – Above Low Credenza



WHAT'S INCLUDED

1 wall panel with shelves (as specified), wood wall cleats, backpainted glass lower portion

NOTES

50-1/4" height will have one shelf.

64-3/8" height will have one or two shelves depending on the number of shelves specified.

64-3/8" height will have a maximum width of 60".

Shelves align with current Dossier datum heights.

Sliding Door, Cubby and Top options are not available.

This is a Full Height Wall Panel and is not intended to be specified with a storage cabinet installed above it.

PRODUCT OPTIONS

| Grain Direction | Height | Depth | Width | Number of Shelves | Top Panel Finish | Bottom Panel Finish |
|---------------------|------------------|------------------|--|----------------------|--|--|
| H Horizontal | 50 50-1/4 | 12 12 | 030, 036, 042, 048, 054, 060, 066, 072, 078, 084, 090, 096, 102, 108 | 1 1 Shelf | Flintwood | K7 Very White |
| V Vertical | 64 64-3/8 | 15 15-1/2 | | 2 Two Shelves | Natural Veneer CWS Custom Wood Stain | K1 Storm White J6 Gris K8 Graphic Steel |

SAMPLE ORDER CODE

| | | | | | | |
|----------------|-----------|-----------|------------|----------|-----------|-----------|
| ZJWCL V | 50 | 15 | 060 | 1 | VE | K7 |
|----------------|-----------|-----------|------------|----------|-----------|-----------|

DIMENSIONS FOR MM X BY 25.4

| H | D | W |
|--------|----|-----|
| 50-1/4 | 12 | 30 |
| 50-1/4 | 12 | 36 |
| 50-1/4 | 12 | 42 |
| 50-1/4 | 12 | 48 |
| 50-1/4 | 12 | 54 |
| 50-1/4 | 12 | 60 |
| 50-1/4 | 12 | 66 |
| 50-1/4 | 12 | 72 |
| 50-1/4 | 12 | 78 |
| 50-1/4 | 12 | 84 |
| 50-1/4 | 12 | 90 |
| 50-1/4 | 12 | 96 |
| 50-1/4 | 12 | 102 |
| 50-1/4 | 12 | 108 |

PRICING

| FLINTWOOD | | VENEER | |
|-----------|------|-----------|------|
| One Shelf | | One Shelf | |
| 2810 | 2825 | 3081 | 3340 |
| 3062 | 3081 | 3596 | 4147 |
| 3316 | 3340 | 4119 | 4406 |
| 3572 | 3596 | 4373 | 4663 |
| 4119 | 4147 | 4628 | 4922 |
| 4373 | 4406 | 4880 | 5219 |
| 4628 | 4663 | 5175 | 5727 |
| 4880 | 4922 | 5682 | 5983 |
| 5175 | 5219 | 5936 | 6241 |
| 5682 | 5727 | 6190 | 6794 |
| 5936 | 5983 | 6740 | 7050 |
| 6190 | 6241 | 6995 | |
| 6740 | 6794 | | |
| 6995 | 7050 | | |

Pricing is continued on the following page.

Z J W C L
Wall Panel, Open Shelves
Combination – Above Low Credenza
(Continued)

DIMENSIONS
FOR MM X BY 25.4

| H | D | W |
|--------|--------|-----|
| 50-1/4 | 15-1/2 | 30 |
| 50-1/4 | 15-1/2 | 36 |
| 50-1/4 | 15-1/2 | 42 |
| 50-1/4 | 15-1/2 | 48 |
| 50-1/4 | 15-1/2 | 54 |
| 50-1/4 | 15-1/2 | 60 |
| 50-1/4 | 15-1/2 | 66 |
| 50-1/4 | 15-1/2 | 72 |
| 50-1/4 | 15-1/2 | 78 |
| 50-1/4 | 15-1/2 | 84 |
| 50-1/4 | 15-1/2 | 90 |
| 50-1/4 | 15-1/2 | 96 |
| 50-1/4 | 15-1/2 | 102 |
| 50-1/4 | 15-1/2 | 108 |

PRICING

| FLINTWOOD | | VENEER | |
|------------------|--|------------------|--|
| One Shelf | | One Shelf | |
| 2888 | | 2907 | |
| 3149 | | 3173 | |
| 3412 | | 3436 | |
| 3671 | | 3702 | |
| 4229 | | 4262 | |
| 4492 | | 4526 | |
| 4753 | | 4792 | |
| 5015 | | 5056 | |
| 5315 | | 5364 | |
| 5829 | | 5881 | |
| 6090 | | 6146 | |
| 6353 | | 6411 | |
| 6910 | | 6972 | |
| 7171 | | 7237 | |

| | | |
|--------|--------|----|
| 64-3/8 | 12 | 30 |
| 64-3/8 | 12 | 36 |
| 64-3/8 | 12 | 42 |
| 64-3/8 | 12 | 48 |
| 64-3/8 | 12 | 54 |
| 64-3/8 | 12 | 60 |
| 64-3/8 | 15-1/2 | 30 |
| 64-3/8 | 15-1/2 | 36 |
| 64-3/8 | 15-1/2 | 42 |
| 64-3/8 | 15-1/2 | 48 |
| 64-3/8 | 15-1/2 | 54 |
| 64-3/8 | 15-1/2 | 60 |

| FLINTWOOD | | VENEER | |
|------------------|--------------------|------------------|--------------------|
| One Shelf | Two Shelves | One Shelf | Two Shelves |
| 3267 | 3537 | 3301 | 3572 |
| 3591 | 3857 | 3630 | 3896 |
| 3916 | 4175 | 3957 | 4219 |
| 4243 | 4496 | 4285 | 4543 |
| 4864 | 5197 | 4910 | 5249 |
| 5188 | 5517 | 5239 | 5573 |
| 3347 | 3655 | 3380 | 3691 |
| 3678 | 3989 | 3714 | 4029 |
| 4012 | 4322 | 4051 | 4367 |
| 4343 | 4660 | 4386 | 4704 |
| 4972 | 5373 | 5022 | 5428 |
| 5305 | 5707 | 5356 | 5764 |