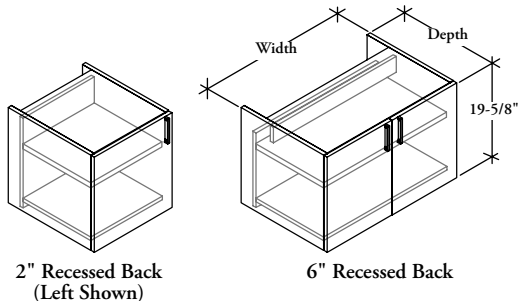


ZJQD

Cabinet with Doors – Low, for use with Credenza Top



WHAT'S INCLUDED

1 cabinet, soft close hinged door(s), 1 height-adjustable shelf, lock and keys (if specified)

NOTES

Recessed back is unfinished and inset 2" for wire management or 6" with interior access panel.

6" Recessed Back is only available on widths 30", 36" and 42".

Orientation only required for widths 15" and 18".

Case height without top is 19-5/8", case height with top is 21-1/8".

Horizontal grain direction Veneer Group 4 only.

Flintwood available in Open Pore finish only.

PRODUCT OPTIONS

Recessed Back Style	Grain Direction	Depth	Width	Orientation
2 2" Recessed Back 6 6" Recessed Back	H Horizontal V Vertical	20, 24	15, 18, 30, 36, 42	L Left R Right

SAMPLE ORDER CODE

ZJQD 6	V	20	30	
--------	---	----	----	--

PRODUCT OPTIONS (CONTINUED)

Veneer Finish	Pull Style	Pull Finish	Lock	Lock Finish	Back Panel Wire Management
Flintwood Veneer CWS Custom Wood Stain	X Dossier Pull R Rectangular	A Satin Nickel E Ebony 7 Platinum V Very White X Anthracite 2 Burnished Bronze S Sepia Bronze M Graphite F Titanium Grey 1 Gilded Ash	N No Lock L Lock	E Ebony C Polished Chrome	N None L Left R Right B Left & Right

SAMPLE ORDER CODE (CONTINUED)

DV	X	A	N		R
----	---	---	---	--	---

See pricing on following page.

Z J Q D

Cabinet with Doors – Low, for use with Credenza Top (Continued)

DIMENSIONS
INCHES / MM

D	W
20 / 508	15 / 381
20 / 508	18 / 457
20 / 508	30 / 762
20 / 508	36 / 914
20 / 508	42 / 1067
24 / 610	15 / 381
24 / 610	18 / 457
24 / 610	30 / 762
24 / 610	36 / 914
24 / 610	42 / 1067

PRICING

2" RECESSED BACK (2)					
VENEER			FLINTWOOD		
Vertical Grain	Horizontal Grain		Vertical Grain	Horizontal Grain	
2426	2624		2304	2494	
2600	2811		2471	2673	
3315	3546		3151	3370	
3493	3738		3321	3551	
3738	3992		3551	3791	
2543	2747		2417	2610	
2725	2944		2589	2797	
3480	3722		3305	3536	
3678	3934		3492	3736	
3942	4206		3746	3996	

6" RECESSED BACK (6)					
VENEER			FLINTWOOD		
Vertical Grain	Horizontal Grain		Vertical Grain	Horizontal Grain	
3315	3546		3151	3370	
3493	3738		3321	3551	
3738	3992		3551	3791	
3480	3722		3305	3536	
3678	3934		3492	3736	
3942	4206		3746	3996	

If Lock (L) is specified, add 113

To order a Custom Color for Dossier please use the code ZCCWS. A one time 1182 list charge per color applies.