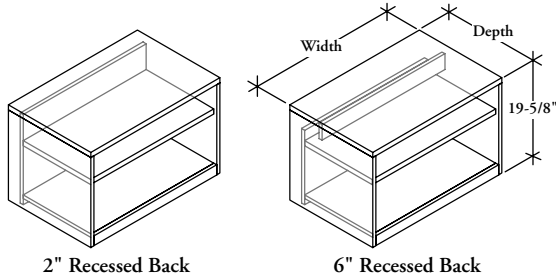


**ZJKC**  
**Open Cabinet – Low**



**WHAT'S INCLUDED**

1 open cabinet, 1 height-adjustable shelf

**NOTES**

Recessed back is unfinished and inset 2" for wire management or 6" with interior access panel.

6" Recessed Back is only available on widths 30", 36" and 42".

Case height is 19-5/8" and has a finished top.

Horizontal grain direction Veneer Group 4 only.

Flintwood available in Open Pore finish only.

**PRODUCT OPTIONS**

Recessed Back Style	Grain Direction	Depth	Width	Veneer Finish
2 2" Recessed Back	<b>H</b> Horizontal	20, 24	15, 18, 30, 36, 42	Flintwood
6 6" Recessed Back	<b>V</b> Vertical			Natural Veneer <b>CWS</b> Custom Wood Stain

**SAMPLE ORDER CODE**

<b>ZJKC 2</b>	<b>V</b>	<b>24</b>	<b>42</b>	<b>DV</b>
---------------	----------	-----------	-----------	-----------

**PRODUCT OPTIONS CONTINUED**

Left Data/Electrical	Left Grommet Finish (if specified)	Module Finish (if specified)	Right Data/Electrical	Right Grommet Finish (if specified)	Module Finish (if specified)	Back Panel Wire Management
<b>N</b> None	<b>A</b> Satin Nickel	<b>B</b> Black	<b>N</b> None	<b>A</b> Satin Nickel	<b>B</b> Black	<b>N</b> None
<b>R</b> Rectangular Grommet	<b>E</b> Ebony	<b>W</b> White	<b>R</b> Rectangular Grommet	<b>E</b> Ebony	<b>W</b> White	<b>L</b> Left
<b>C</b> Round Grommet	<b>7</b> Platinum		<b>C</b> Round Grommet	<b>7</b> Platinum		<b>R</b> Right
<b>D</b> Data/Electrical Module	<b>V</b> Very White		<b>D</b> Data/Electrical Module	<b>V</b> Very White		<b>B</b> Left & Right
	<b>I</b> Satin Nickel Coordinate			<b>I</b> Satin Nickel Coordinate		
	<b>X</b> Anthracite			<b>X</b> Anthracite		
	<b>2</b> Burnished Bronze			<b>2</b> Burnished Bronze		
	<b>S</b> Sepia Bronze			<b>S</b> Sepia Bronze		
	<b>M</b> Graphite			<b>M</b> Graphite		
	<b>F</b> Titanium Grey			<b>F</b> Titanium Grey		
	<b>1</b> Gilded Ash			<b>1</b> Gilded Ash		

**SAMPLE ORDER CODE CONTINUED**

<b>N</b>			<b>R</b>	<b>A</b>		<b>L</b>
----------	--	--	----------	----------	--	----------

See pricing on following page.

Z J K C  
Open Cabinet – Low (Continued)

**DIMENSIONS**  
**INCHES / MM**

D	W
20 / 508	15 / 381
20 / 508	18 / 457
20 / 508	30 / 762
20 / 508	36 / 914
20 / 508	42 / 1067
24 / 610	15 / 381
24 / 610	18 / 457
24 / 610	30 / 762
24 / 610	36 / 914
24 / 610	42 / 1067

**PRICING**

2" RECESSED BACK (2)					
VENEER			FLINTWOOD		
Vertical Grain	Horizontal Grain		Vertical Grain	Horizontal Grain	
1538	1648		1461	1565	
1633	1746		1552	1658	
2016	2140		1915	2032	
2129	2258		2023	2145	
2242	2377		2130	2258	
1631	1747		1550	1660	
1735	1854		1648	1762	
2153	2285		2046	2171	
2284	2423		2170	2302	
2415	2560		2295	2433	

6" RECESSED BACK (6)					
VENEER			FLINTWOOD		
Vertical Grain	Horizontal Grain		Vertical Grain	Horizontal Grain	
2016	2140		1896	2010	
2129	2258		2001	2123	
2242	2377		2108	2234	
2153	2285		2025	2149	
2284	2423		2148	2278	
2415	2560		2270	2408	

If Rectangular Grommet, Painted is specified, add 165

If Rectangular Grommet, Satin Nickel (A) is specified, add 204

If Round Grommet, Ebony (E) is specified, add 120

If Round Grommet, Satin Nickel Coordinate (I) is specified, add 176

If Data/Electrical Module (D) is specified, add 699

To order a Custom Color for Dossier please use the code ZCCWS. A one time 897 list charge per color applies.