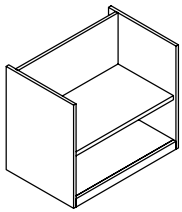
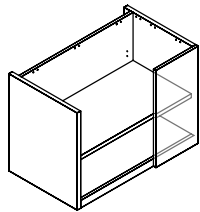


ZJJC

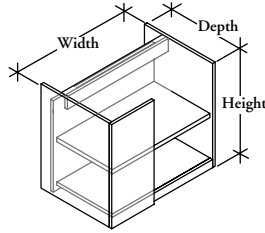
Open Cabinet – High, for use with Credenza Top



2" Recessed Back –
27-1/2" & 29" high
(with top)



2" Recessed Back –
27-1/2" & 29" high
(with top) (Right shown)



6" Recessed Back –
27-1/2" & 29" high
(with top) (Left shown)

WHAT'S INCLUDED

1 open cabinet, 1 height-adjustable shelf.

NOTES

Recessed back is unfinished and inset 2" for wire management or 6" with interior access panel.

6" Recessed Back is only available on widths 30", 36" and 42".

27-1/2" Credenza Top Height has an open top.

29" Credenza Top Height has an enclosed top and includes spacers.

Horizontal grain direction Veneer Group 4 only.

Flintwood available in Open Pore finish only.

PRODUCT OPTIONS

Case Style	Recessed Back Style	Grain Direction	Credenza Top Height	Depth
O Open	2 2" Recessed Back	H Horizontal	27 27-1/2	20, 24
M 12" Modesty Filler Panel	6 6" Recessed Back	V Vertical	29 29	

SAMPLE ORDER CODE

ZJJC O	2	V	29	20
---------------	----------	----------	-----------	-----------

PRODUCT OPTIONS CONTINUED

Width	Orientation	Finish	Back Panel Wire Management
15, 18, 30, 36, 42	L Left R Right	Flintwood Natural Veneer CWS Custom Wood Stain	N None L Left R Right B Left & Right

SAMPLE ORDER CODE CONTINUED

30	L	DV	B
-----------	----------	-----------	----------

See pricing on following page.

Z J J C

Open Cabinet – High, for use with
Credenza Top (Continued)

DIMENSIONS
INCHES / MM

Top "H"	D	W
27.5 / 699	20 / 508	15 / 381
27.5 / 699	20 / 508	18 / 457
27.5 / 699	20 / 508	30 / 7629
27.5 / 699	20 / 508	36 / 914
27.5 / 699	20 / 508	42 / 1067
27.5 / 699	24 / 610	15 / 381
27.5 / 699	24 / 610	18 / 457
27.5 / 699	24 / 610	30 / 762
27.5 / 699	24 / 610	36 / 914
27.5 / 699	24 / 610	42 / 1067
29 / 737	20 / 508	15 / 381
29 / 737	20 / 508	18 / 457
29 / 737	20 / 508	30 / 762
29 / 737	20 / 508	36 / 914
29 / 737	20 / 508	42 / 1067
29 / 737	24 / 610	15 / 381
29 / 737	24 / 610	18 / 457
29 / 737	24 / 610	30 / 762
29 / 737	24 / 610	36 / 914
29 / 737	24 / 610	42 / 1067
27.5 / 699	20 / 508	30 / 762
27.5 / 699	20 / 508	36 / 914
27.5 / 699	20 / 508	42 / 1067
27.5 / 699	24 / 610	30 / 762
27.5 / 699	24 / 610	36 / 914
27.5 / 699	24 / 610	42 / 1067
29 / 737	20 / 508	30 / 762
29 / 737	20 / 508	36 / 914
29 / 737	20 / 508	42 / 1067
29 / 737	24 / 610	30 / 762
29 / 737	24 / 610	36 / 914
29 / 737	24 / 610	42 / 1067

PRICING

OPEN (O)			
VENEER		FLINTWOOD	
Vertical Grain	Horizontal Grain	Vertical Grain	Horizontal Grain
1453	1570	1384	1470
1498	1584	1420	1504
1841	1926	1750	1836
1935	2072	1839	1924
2029	2113	1927	2011
1548	1632	1479	1564
1600	1685	1521	1606
1967	2052	1876	1961
2072	2221	1976	2061
2178	2263	2076	2161
1509	1593	1441	1526
1555	1641	1476	1560
1903	1989	1812	1898
1997	2082	1901	1986
2096	2182	1995	2079
1604	1688	1536	1620
1656	1742	1578	1662
2029	2113	1938	2023
2134	2220	2038	2124
2246	2330	2144	2228
12" MODESTY FILLER PANEL (M)			
VENEER		FLINTWOOD	
Vertical Grain	Horizontal Grain	Vertical Grain	Horizontal Grain
1955	2101	1864	2010
2048	2194	1952	2098
2142	2295	2039	2192
2079	2226	1990	2135
2186	2378	2090	2282
2290	2489	2189	2387
2016	2186	1926	2095
2110	2280	2014	2184
2209	2379	2108	2278
2142	2312	2052	2221
2294	2462	2197	2366
2403	2573	2302	2472

To order a Custom Color for Dossier please use the code ZCCWS. A one time 897 list charge per color applies.