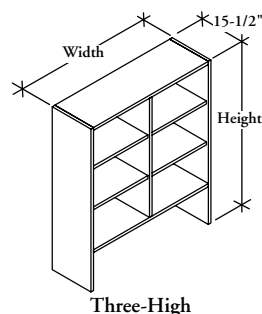


hutch storage

Z J H O

Hutch – Open



Three-High

WHAT'S INCLUDED

1 open storage hutch, fixed shelves (as specified), fabric panel (if specified), cubby (if specified), valance and light (if specified)

WHAT'S EXCLUDED

Hardware and reinforcement materials for wall mounting.

NOTES

Configuration Three High (T) is only available with Overall Height of 84" and widths 30" - 84" (6" increments).

One-High configuration has a single fixed shelf.

Two-High configuration has two fixed shelves.

Three-High configuration has three fixed shelves.

Valance and Light are only available when no Cubby is specified.

Flintwood available in Open Pore finish only.

PRODUCT OPTIONS

Cubby Shelf	Height	Configuration Height	Grain Direction
N No Cubby	1 70" Overall Height with 27-1/2" high surface	S One-High	H Horizontal
C Cubby	2 70" Overall Height with 29" high surface	D Two-High	V Vertical
V No Cubby with Valance	3 84" Overall Height with 27-1/2" high surface	T Three-High	
	4 84" Overall Height with 29" high surface		

SAMPLE ORDER CODE

ZJHO N	1	D	V
---------------	----------	----------	----------

PRODUCT OPTIONS CONTINUED

Width (6" increments)	Door Finish	Case Finish	Panel Style	Fabric Panel	Cubby Shelf Finish	Cubby Divider Finish
30, 36, 42, 48, 54, 60, 66, 72, 78, 84, 90, 96, 102, 108	Flintwood Natural Veneer CWS Custom Wood Stain	Flintwood Natural Veneer CWS Custom Wood Stain	N No Fabric Panel F Fabric Panel	Fabric COM Fabric Gr. A Fabric Gr. 1 Fabric Gr. 2 Fabric Gr. 3 Fabric Gr. 5 Fabric Gr. 6 Fabric Gr. 7	Flintwood Natural Veneer CWS Custom Wood Stain A5 Glass MV White Solid Surface	A Satin Nickel E Ebony 7 Platinum V Very White X Anthracite 2 Burnished Bronze S Sepia Bronze M Graphite F Titanium Grey 1 Gilded Ash

SAMPLE ORDER CODE CONTINUED

96	DV	DV	F	B217		
-----------	-----------	-----------	----------	-------------	--	--

See pricing on following page.

Hutch Open (Continued)

DIMENSIONS
INCHES / MM

Overall "H"	Surface "H"	W
70 / 1778	27.5 / 699	30 / 762
70 / 1778	27.5 / 699	36 / 914
70 / 1778	27.5 / 699	42 / 1067
70 / 1778	27.5 / 699	48 / 1219
70 / 1778	27.5 / 699	54 / 1372
70 / 1778	27.5 / 699	60 / 1524
70 / 1778	27.5 / 699	66 / 1676
70 / 1778	27.5 / 699	72 / 1829
70 / 1778	27.5 / 699	78 / 1981
70 / 1778	27.5 / 699	84 / 2134
70 / 1778	27.5 / 699	90 / 2286
70 / 1778	27.5 / 699	96 / 2438
70 / 1778	27.5 / 699	102 / 2591
70 / 1778	27.5 / 699	108 / 2743
70 / 1778	29 / 737	30 / 762
70 / 1778	29 / 737	36 / 914
70 / 1778	29 / 737	42 / 1067
70 / 1778	29 / 737	48 / 1219
70 / 1778	29 / 737	54 / 1372
70 / 1778	29 / 737	60 / 1524
70 / 1778	29 / 737	66 / 1676
70 / 1778	29 / 737	72 / 1829
70 / 1778	29 / 737	78 / 1981
70 / 1778	29 / 737	84 / 2134
70 / 1778	29 / 737	90 / 2286
70 / 1778	29 / 737	96 / 2438
70 / 1778	29 / 737	102 / 2591
70 / 1778	29 / 737	108 / 2743

PRICING

ONE-HIGH (\$)			
VENEER		FLINTWOOD	
Vertical Grain	Horizontal Grain	Vertical Grain	Horizontal Grain
1896	2181	1742	2028
1997	2288	1836	2128
2098	2397	1930	2229
2514	2824	2313	2626
2615	2933	2406	2726
2717	3041	2498	2830
2818	3150	2591	2930
2920	3258	2685	3030
3023	3368	2779	3131
3362	3719	3093	3459
3464	3829	3187	3560
3565	3937	3281	3661
3742	4120	3442	3832
3843	4229	3536	3933
1873	2156	1742	2004
1973	2264	1836	2105
2073	2370	1930	2204
2487	2796	2313	2600
2587	2902	2406	2700
2686	3009	2498	2800
2786	3118	2591	2899
2888	3223	2685	2997
2989	3331	2779	3097
3326	3681	3093	3423
3427	3787	3187	3523
3527	3896	3281	3623
3702	4077	3442	3792
3802	4184	3536	3892

DIMENSIONS
INCHES / MM

Overall "H"	Surface "H"	W
84 / 2134	27.5 / 699	30 / 762
84 / 2134	27.5 / 699	36 / 914
84 / 2134	27.5 / 699	42 / 1067
84 / 2134	27.5 / 699	48 / 1219
84 / 2134	27.5 / 699	54 / 1372
84 / 2134	27.5 / 699	60 / 1524
84 / 2134	27.5 / 699	66 / 1676
84 / 2134	27.5 / 699	72 / 1829
84 / 2134	27.5 / 699	78 / 1981
84 / 2134	27.5 / 699	84 / 2134
84 / 2134	27.5 / 699	90 / 2286
84 / 2134	27.5 / 699	96 / 2438
84 / 2134	27.5 / 699	102 / 2591
84 / 2134	27.5 / 699	108 / 2743
84 / 2134	29 / 737	30 / 762
84 / 2134	29 / 737	36 / 914
84 / 2134	29 / 737	42 / 1067
84 / 2134	29 / 737	48 / 1219
84 / 2134	29 / 737	54 / 1372
84 / 2134	29 / 737	60 / 1524
84 / 2134	29 / 737	66 / 1676
84 / 2134	29 / 737	72 / 1829
84 / 2134	29 / 737	78 / 1981
84 / 2134	29 / 737	84 / 2134
84 / 2134	29 / 737	90 / 2286
84 / 2134	29 / 737	96 / 2438
84 / 2134	29 / 737	102 / 2591
84 / 2134	29 / 737	108 / 2743

PRICING

ONE-HIGH (\$)			
VENEER		FLINTWOOD	
Vertical Grain	Horizontal Grain	Vertical Grain	Horizontal Grain
2252	2551	2094	2372
2368	2675	2203	2488
2485	2799	2310	2603
2911	3239	2708	3012
3028	3363	2815	3128
3144	3487	2924	3242
3259	3610	3031	3357
3376	3735	3140	3473
3491	3857	3247	3587
3844	4224	3576	3929
3960	4348	3683	4044
4077	4471	3792	4159
4266	4670	3968	4343
4382	4793	4077	4457
2229	2527	2073	2349
2344	2649	2181	2463
2459	2771	2287	2577
2884	3210	2683	2986
2999	3333	2788	3100
3113	3455	2896	3214
3227	3578	3001	3326
3343	3700	3109	3440
3457	3820	3216	3553
3809	4186	3543	3894
3922	4308	3648	4006
4037	4430	3755	4121
4225	4626	3930	4302
4340	4749	4036	4417

To order a Custom Color for Dossier please use the code ZCCWS. A one time 897 list charge per color applies.

Pricing is continued on the following page.

Z J H O

Hutch Open (Continued)

DIMENSIONS INCHES / MM

Overall "H"	Surface "H"	W
70 / 1778	27.5 / 699	30 / 762
70 / 1778	27.5 / 699	36 / 914
70 / 1778	27.5 / 699	42 / 1067
70 / 1778	27.5 / 699	48 / 1219
70 / 1778	27.5 / 699	54 / 1372
70 / 1778	27.5 / 699	60 / 1524
70 / 1778	27.5 / 699	66 / 1676
70 / 1778	27.5 / 699	72 / 1829
70 / 1778	27.5 / 699	78 / 1981
70 / 1778	27.5 / 699	84 / 2134
70 / 1778	27.5 / 699	90 / 2286
70 / 1778	27.5 / 699	96 / 2438
70 / 1778	27.5 / 699	102 / 2591
70 / 1778	27.5 / 699	108 / 2743
70 / 1778	29 / 737	30 / 762
70 / 1778	29 / 737	36 / 914
70 / 1778	29 / 737	42 / 1067
70 / 1778	29 / 737	48 / 1219
70 / 1778	29 / 737	54 / 1372
70 / 1778	29 / 737	60 / 1524
70 / 1778	29 / 737	66 / 1676
70 / 1778	29 / 737	72 / 1829
70 / 1778	29 / 737	78 / 1981
70 / 1778	29 / 737	84 / 2134
70 / 1778	29 / 737	90 / 2286
70 / 1778	29 / 737	96 / 2438
70 / 1778	29 / 737	102 / 2591
70 / 1778	29 / 737	108 / 2743

Overall "H"	Surface "H"	W
84 / 2134	27.5 / 699	30 / 762
84 / 2134	27.5 / 699	36 / 914
84 / 2134	27.5 / 699	42 / 1067
84 / 2134	27.5 / 699	48 / 1219
84 / 2134	27.5 / 699	54 / 1372
84 / 2134	27.5 / 699	60 / 1524
84 / 2134	27.5 / 699	66 / 1676
84 / 2134	27.5 / 699	72 / 1829
84 / 2134	27.5 / 699	78 / 1981
84 / 2134	27.5 / 699	84 / 2134

PRICING

TWO-HIGH (D)			
VENEER		FLINTWOOD	
Vertical Grain	Horizontal Grain	Vertical Grain	Horizontal Grain
2340	2635	2176	2452
2473	2776	2300	2582
2604	2915	2422	2711
3033	3363	2820	3128
3164	3505	2942	3259
3370	3719	3133	3459
3502	3860	3257	3589
3633	4000	3379	3719
3766	4140	3502	3850
4343	4737	4039	4405
4474	4876	4161	4534
4607	5017	4284	4665
4812	5232	4475	4866
4943	5371	4597	4995
2318	2612	2155	2429
2450	2750	2278	2558
2579	2890	2398	2687
3006	3335	2797	3101
3137	3474	2916	3231
3340	3686	3107	3429
3470	3825	3227	3557
3601	3965	3349	3686
3733	4104	3470	3816
4307	4698	4005	4369
4436	4837	4126	4497
4566	4975	4247	4627
4772	5188	4436	4826
4902	5328	4558	4954

THREE-HIGH (T)			
VENEER		FLINTWOOD	
Vertical Grain	Horizontal Grain	Vertical Grain	Horizontal Grain
3477	3758	3235	3495
3357	3649	3122	3394
3531	3836	3284	3566
4524	4870	4207	4528
4700	5058	4370	4704
4949	5318	4603	4947
5125	5507	4768	5121
5300	5692	4930	5294
5477	5880	5092	5468
5873	6290	5462	5848

DIMENSIONS INCHES / MM

Overall "H"	Surface "H"	W
84 / 2134	27.5 / 699	30 / 762
84 / 2134	27.5 / 699	36 / 914
84 / 2134	27.5 / 699	42 / 1067
84 / 2134	27.5 / 699	48 / 1219
84 / 2134	27.5 / 699	54 / 1372
84 / 2134	27.5 / 699	60 / 1524
84 / 2134	27.5 / 699	66 / 1676
84 / 2134	27.5 / 699	72 / 1829
84 / 2134	27.5 / 699	78 / 1981
84 / 2134	27.5 / 699	84 / 2134
84 / 2134	27.5 / 699	90 / 2286
84 / 2134	27.5 / 699	96 / 2438
84 / 2134	27.5 / 699	102 / 2591
84 / 2134	27.5 / 699	108 / 2743
84 / 2134	29 / 737	30 / 762
84 / 2134	29 / 737	36 / 914
84 / 2134	29 / 737	42 / 1067
84 / 2134	29 / 737	48 / 1219
84 / 2134	29 / 737	54 / 1372
84 / 2134	29 / 737	60 / 1524
84 / 2134	29 / 737	66 / 1676
84 / 2134	29 / 737	72 / 1829
84 / 2134	29 / 737	78 / 1981
84 / 2134	29 / 737	84 / 2134
84 / 2134	29 / 737	90 / 2286
84 / 2134	29 / 737	96 / 2438
84 / 2134	29 / 737	102 / 2591
84 / 2134	29 / 737	108 / 2743

Overall "H"	Surface "H"	W
84 / 2134	29 / 737	30 / 762
84 / 2134	29 / 737	36 / 914
84 / 2134	29 / 737	42 / 1067
84 / 2134	29 / 737	48 / 1219
84 / 2134	29 / 737	54 / 1372
84 / 2134	29 / 737	60 / 1524
84 / 2134	29 / 737	66 / 1676
84 / 2134	29 / 737	72 / 1829
84 / 2134	29 / 737	78 / 1981
84 / 2134	29 / 737	84 / 2134

PRICING

TWO-HIGH (D)			
VENEER		FLINTWOOD	
Vertical Grain	Horizontal Grain	Vertical Grain	Horizontal Grain
2698	3006	2509	2797
2843	3162	2645	2940
2990	3317	2780	3086
3506	3854	3261	3584
3651	4008	3396	3727
3872	4238	3601	3941
4017	4394	3737	4087
4162	4549	3871	4231
4308	4705	4006	4376
4826	5241	4488	4874
4971	5396	4623	5019
5116	5551	4757	5162
5336	5781	4963	5377
5483	5936	5098	5521
2675	2982	2488	2774
2819	3137	2622	2916
2963	3289	2755	3060
3480	3825	3236	3557
3623	3979	3370	3702
3841	4206	3573	3911
3986	4360	3707	4055
4129	4514	3840	4198
4274	4668	3974	4340
4790	5203	4454	4839
4934	5357	4588	4982
5078	5511	4721	5125
5296	5738	4926	5336
5440	5892	5060	5481

THREE-HIGH (T)			
VENEER		FLINTWOOD	
Vertical Grain	Horizontal Grain	Vertical Grain	Horizontal Grain
3158	3437	2936	3197
3332	3623	3099	3370
3506	3809	3261	3543
4496	4841	4182	4502
4672	5027	4344	4676
4918	5287	4574	4917
5092	5471	4737	5089
5267	5657	4898	5262
5440	5843	5060	5433
5836	6251	5428	5813

Pricing is continued on the following page.

Hutch Open (Continued)

**DIMENSIONS
INCHES / MM**

Overall "H"	W
70 / 1778	30 / 762
70 / 1778	36 / 914
70 / 1778	42 / 1067
70 / 1778	48 / 1219
70 / 1778	54 / 1372
70 / 1778	60 / 1524
70 / 1778	66 / 1676
70 / 1778	72 / 1829
70 / 1778	78 / 1981
70 / 1778	84 / 2134
70 / 1778	90 / 2286
70 / 1778	96 / 2438
70 / 1778	102 / 2591
70 / 1778	108 / 2743
84 / 2134	30 / 762
84 / 2134	36 / 914
84 / 2134	42 / 1067
84 / 2134	48 / 1219
84 / 2134	54 / 1372
84 / 2134	60 / 1524
84 / 2134	66 / 1676
84 / 2134	72 / 1829
84 / 2134	78 / 1981
84 / 2134	84 / 2134
84 / 2134	90 / 2286
84 / 2134	96 / 2438
84 / 2134	102 / 2591
84 / 2134	108 / 2743

PRICING
ONE-HIGH – 27.5" & 29" SURFACE HEIGHT

IF FABRIC PANEL IS SPECIFIED

HORIZONTAL (CUBBY & NO CUBBY)

Gr. A/ COM	Gr. 1	Gr. 2	Gr. 3	Gr. 4	Gr. 5	Graded-In Gr. 6	Graded-In Gr. 7
3023	3037	3147	3207	3262	3316	3423	3496
3151	3166	3276	3336	3391	3444	3552	3625
3316	3333	3442	3500	3555	3610	3718	3790
3764	3779	3889	3949	4003	4058	4164	4238
3893	3908	4017	4078	4131	4186	4294	4367
4022	4036	4146	4206	4261	4314	4423	4495
4148	4166	4275	4335	4390	4443	4551	4623
4315	4331	4442	4500	4554	4609	4716	4790
4445	4461	4571	4629	4684	4739	4846	4919
4816	4833	4942	5002	5057	5109	5218	5292
4944	4962	5071	5130	5185	5238	5347	5420
5111	5127	5238	5297	5352	5405	5514	5586
5314	5330	5439	5499	5554	5608	5715	5789
5525	5547	5693	5773	5845	5917	6061	6158
6079	6095	6204	6265	3721	6372	6481	6554
6314	6335	6483	6561	3876	6707	6850	6947
3483	3497	3608	3668	4067	3776	3882	3957
3638	3652	3763	3821	4539	3931	4037	4111
3829	3843	3953	4013	4693	4121	4229	4302
4299	4315	4425	4485	4847	4592	4701	4774
4454	4469	4580	4640	5001	4748	4855	4929
4608	4623	4734	4793	5193	4902	5009	5082
4761	4777	4887	4947	5347	5056	5162	5236
4953	4969	5079	5139	5744	5245	5355	5428
5107	5123	5233	5293	5899	5401	5509	5582
5504	5521	5629	5690	6091	5799	5906	5980
5658	5675	5784	5844	6319	5952	6060	6134
5851	5867	5977	6036	6634	6143	6252	6326

TWO-HIGH – 27.5" & 29" SURFACE HEIGHT

IF FABRIC PANEL IS SPECIFIED

HORIZONTAL (CUBBY & NO CUBBY)

Gr. A/ COM	Gr. 1	Gr. 2	Gr. 3	Gr. 4	Gr. 5	Graded-In Gr. 6	Graded-In Gr. 7		
70 / 1778	30 / 762	3389	3403	3514	3574	3627	3682	3789	3863
70 / 1778	36 / 914	3537	3554	3663	3723	3778	3832	3939	4012
70 / 1778	42 / 1067	3724	3741	3850	3910	3965	4018	4126	4200
70 / 1778	48 / 1219	4182	4199	4308	4368	4423	4475	4584	4656
70 / 1778	54 / 1372	4333	4349	4458	4519	4573	4626	4735	4808
70 / 1778	60 / 1524	4557	4574	4683	4743	4798	4850	4960	5031
70 / 1778	66 / 1676	4707	4722	4834	4893	4947	5001	5108	5181
70 / 1778	72 / 1829	4894	4910	5020	5080	5135	5187	5296	5368
70 / 1778	78 / 1981	5044	5060	5170	5230	5283	5337	5446	5519
70 / 1778	84 / 2134	5651	5666	5776	5836	5890	5944	6051	6125
70 / 1778	90 / 2286	5800	5816	5927	5985	6040	6094	6202	6274
70 / 1778	96 / 2438	5987	6003	6113	6173	6228	6279	6389	6462
70 / 1778	102 / 2591	6211	6228	6337	6396	6451	6504	6614	6686
70 / 1778	108 / 2743	6444	6464	6612	6690	6763	6835	6979	7076

Pricing is continued on the following page.

Z J H O

Hutch Open (Continued)

DIMENSIONS INCHES / MM

Overall "H"	W
84 / 2134	30 / 762
84 / 2134	36 / 914
84 / 2134	42 / 1067
84 / 2134	48 / 1219
84 / 2134	54 / 1372
84 / 2134	60 / 1524
84 / 2134	66 / 1676
84 / 2134	72 / 1829
84 / 2134	78 / 1981
84 / 2134	84 / 2134
84 / 2134	90 / 2286
84 / 2134	96 / 2438
84 / 2134	102 / 2591
84 / 2134	108 / 2743

PRICING

TWO-HIGH – 27.5" & 29" SURFACE HEIGHT

IF FABRIC PANEL IS SPECIFIED

HORIZONTAL (CUBBY & NO CUBBY)

Gr. A/ COM	Gr. 1	Gr. 2	Gr. 3	Gr. 4	Gr. 5	Graded-In Gr. 6	Graded-In Gr. 7
6799	6814	6924	6984	4035	7093	7200	7273
7045	7067	7213	7293	4201	7436	7581	7678
3797	3812	3921	3982	4403	4089	4198	4271
3962	3978	4088	4146	4949	4255	4363	4435
4163	4179	4289	4349	5114	4456	4564	4639
4710	4725	4836	4895	5354	5003	5111	5184
4874	4890	5000	5060	5519	5168	5275	5349
5113	5129	5239	5299	5719	5406	5516	5587
5278	5295	5404	5464	5886	5574	5680	5753
5481	5497	5607	5665	6432	5774	5883	5954
5646	5661	5772	5832	6596	5940	6047	6121
6192	6209	6319	6379	6799	6486	6594	6667
6357	6372	6483	6543	7039	6651	6758	6832
6558	6576	6684	6745	7365	6852	6961	7033

THREE-HIGH – 27.5" SURFACE HEIGHT

IF FABRIC PANEL IS SPECIFIED

HORIZONTAL (CUBBY & NO CUBBY)

Overall "H"	W	Gr. A/ COM	Gr. 1	Gr. 2	Gr. 3	Gr. 4	Gr. 5	Graded-In Gr. 6	Graded-In Gr. 7
84 / 2134	30 / 762	5105	5121	5231	5291	5345	5398	5507	5580
84 / 2134	36 / 914	5299	5316	5426	5486	5541	5593	5702	5774
84 / 2134	42 / 1067	5752	5769	5877	5938	5992	6046	6154	6228
84 / 2134	48 / 1219	6794	6811	6921	6981	7036	7089	7197	7269
84 / 2134	54 / 1372	7159	7175	7286	7344	7399	7454	7560	7634
84 / 2134	60 / 1524	7428	7446	7555	7615	7670	7723	7831	7903
84 / 2134	66 / 1676	7623	7640	7750	7809	7864	7918	8025	8099
84 / 2134	72 / 1829	7856	7872	7982	8042	8097	8149	8259	8330
84 / 2134	78 / 1981	8051	8068	8176	8236	8291	8344	8453	8525
84 / 2134	84 / 2134	8468	8485	8594	8654	8709	8762	8870	8944

If Cubby Shelf is specified, add;

	Veneer Shelf with Painted Divider	Glass Shelf with Painted Divider	Solid Surface Shelf with Painted Divider
30"	677	1148	1355
36"	704	1220	1355
42"	729	1291	1355
48"	843	1453	1444
54"	869	1524	1444
60"	896	1596	1444
66"	922	1670	1444
72"	1035	1831	1532
78"	1061	1903	1532
84"	1088	1975	2265
90"	1203	2135	2354
99"	1227	2208	2354
102"	1253	2281	2354
108"	1280	2353	2354

If Satin Nickel Divider is specified, add;

30" - 42"	248
48" - 66"	370
72" - 84"	494
90" - 108"	617

If Valance is specified, add;

30" - 36"	914
42" - 48"	1134
54" - 108"	1304

Pricing is continued on the following page.

Hutch Open (Continued)

DIMENSIONS
INCHES / MM

PRICING

ONE-HIGH – 27.5" & 29" SURFACE HEIGHT

IF FABRIC PANEL IS SPECIFIED

VERTICAL (CUBBY & NO CUBBY)

Overall "H"	W	Gr. A/ COM	Gr. 1	Gr. 2	Gr. 3	Gr. 4	Gr. 5	Graded-In Gr. 6	Graded-In Gr. 7
70 / 1778	30 / 762	2738	2752	2863	2923	2976	3031	3139	3211
70 / 1778	36 / 914	2860	2875	2985	3045	3099	3152	3261	3334
70 / 1778	42 / 1067	3017	3034	3144	3203	3257	3312	3420	3492
70 / 1778	48 / 1219	3453	3468	3579	3639	3691	3746	3854	3928
70 / 1778	54 / 1372	3575	3590	3701	3760	3814	3869	3975	4049
70 / 1778	60 / 1524	3696	3713	3821	3881	3936	3990	4098	4171
70 / 1778	66 / 1676	3817	3835	3944	4004	4059	4111	4220	4293
70 / 1778	72 / 1829	3976	3993	4104	4162	4217	4271	4378	4452
70 / 1778	78 / 1981	4099	4114	4224	4284	4338	4393	4500	4574
70 / 1778	84 / 2134	4459	4475	4585	4645	4700	4752	4861	4934
70 / 1778	90 / 2286	4581	4597	4707	4768	4821	4874	4983	5056
70 / 1778	96 / 2438	4740	4755	4867	4926	4980	5033	5142	5214
70 / 1778	102 / 2591	4936	4952	5062	5122	5176	5231	5337	5411
70 / 1778	108 / 2743	5140	5161	5308	5388	5460	5531	5676	5773
84 / 2134	30 / 762	3184	3200	3308	3369	3423	3477	3585	3658
84 / 2134	36 / 914	3331	3346	3456	3516	3570	3624	3733	3805
84 / 2134	42 / 1067	3514	3529	3640	3700	3753	3806	3914	3989
84 / 2134	48 / 1219	3971	3987	4097	4157	4211	4265	4372	4447
84 / 2134	54 / 1372	4119	4135	4243	4303	4358	4412	4520	4592
84 / 2134	60 / 1524	4265	4281	4391	4451	4505	4559	4667	4740
84 / 2134	66 / 1676	4411	4427	4535	4596	4650	4705	4812	4886
84 / 2134	72 / 1829	4595	4611	4720	4780	4835	4888	4996	5070
84 / 2134	78 / 1981	4741	4756	4867	4927	4981	5034	5142	5216
84 / 2134	84 / 2134	5125	5141	5251	5310	5365	5420	5526	5599
84 / 2134	90 / 2286	5271	5287	5396	5456	5511	5564	5673	5746
84 / 2134	96 / 2438	5455	5470	5581	5641	5695	5748	5856	5930
84 / 2134	102 / 2591	5676	5691	5801	5862	5915	5969	6077	6150
84 / 2134	108 / 2743	5904	5926	6073	6152	6223	6296	6439	6537

TWO-HIGH – 27.5" & 29" SURFACE HEIGHT

IF FABRIC PANEL IS SPECIFIED

VERTICAL (CUBBY & NO CUBBY)

Overall "H"	W	Gr. A/ COM	Gr. 1	Gr. 2	Gr. 3	Gr. 4	Gr. 5	Graded-In Gr. 6	Graded-In Gr. 7
70 / 1778	30 / 762	3070	3087	3196	3256	3311	3364	3472	3546
70 / 1778	36 / 914	3210	3227	3337	3397	3452	3505	3613	3685
70 / 1778	42 / 1067	3389	3403	3514	3574	3627	3682	3789	3863
70 / 1778	48 / 1219	3824	3841	3951	4011	4065	4119	4226	4299
70 / 1778	54 / 1372	3965	3981	4090	4150	4204	4258	4366	4438
70 / 1778	60 / 1524	4178	4195	4304	4365	4419	4471	4581	4653
70 / 1778	66 / 1676	4318	4334	4445	4503	4558	4612	4719	4793
70 / 1778	72 / 1829	4494	4512	4621	4681	4736	4788	4897	4969
70 / 1778	78 / 1981	4637	4651	4761	4821	4875	4930	5037	5110
70 / 1778	84 / 2134	5221	5237	5347	5406	5461	5514	5622	5696
70 / 1778	90 / 2286	5360	5377	5487	5546	5599	5654	5762	5835
70 / 1778	96 / 2438	5539	5554	5663	5722	5777	5831	5939	6012
70 / 1778	102 / 2591	5751	5768	5877	5936	5991	6045	6154	6227
70 / 1778	108 / 2743	5972	5995	6141	6220	6293	6365	6509	6606

Pricing is continued on the following page.

Z J H O

Hutch Open (Continued)

DIMENSIONS INCHES / MM

Overall "H"	W
84 / 2134	30 / 762
84 / 2134	36 / 914
84 / 2134	42 / 1067
84 / 2134	48 / 1219
84 / 2134	54 / 1372
84 / 2134	60 / 1524
84 / 2134	66 / 1676
84 / 2134	72 / 1829
84 / 2134	78 / 1981
84 / 2134	84 / 2134
84 / 2134	90 / 2286
84 / 2134	96 / 2438
84 / 2134	102 / 2591
84 / 2134	108 / 2743

PRICING

TWO-HIGH – 27.5" & 29" SURFACE HEIGHT

IF FABRIC PANEL IS SPECIFIED

VERTICAL (CUBBY & NO CUBBY)

Overall "H"	W	Gr. A/ COM	Gr. 1	Gr. 2	Gr. 3	Gr. 4	Gr. 5	Graded-In Gr. 6	Graded-In Gr. 7
84 / 2134	30 / 762	3488	3504	3613	3674	3726	3780	3889	3963
84 / 2134	36 / 914	3643	3659	3770	3829	3881	3936	4045	4118
84 / 2134	42 / 1067	3836	3851	3962	4022	4075	4128	4237	4310
84 / 2134	48 / 1219	4361	4378	4488	4547	4600	4655	4764	4836
84 / 2134	54 / 1372	4518	4532	4643	4703	4756	4811	4918	4992
84 / 2134	60 / 1524	4746	4764	4873	4933	4987	5041	5148	5221
84 / 2134	66 / 1676	4903	4918	5028	5088	5142	5197	5303	5377
84 / 2134	72 / 1829	5094	5110	5220	5278	5333	5388	5495	5567
84 / 2134	78 / 1981	5250	5266	5374	5434	5489	5544	5651	5723
84 / 2134	84 / 2134	5776	5793	5903	5963	6017	6070	6178	6251
84 / 2134	90 / 2286	5932	5948	6058	6117	6172	6227	6333	6406
84 / 2134	96 / 2438	6123	6140	6250	6309	6364	6418	6525	6597
84 / 2134	102 / 2591	6354	6369	6480	6540	6593	6648	6755	6828
84 / 2134	108 / 2743	6591	6613	6759	6839	6911	6982	7127	7225

THREE-HIGH – 27.5" SURFACE HEIGHT

IF FABRIC PANEL IS SPECIFIED

VERTICAL (CUBBY & NO CUBBY)

Overall "H"	W	Gr. A/ COM	Gr. 1	Gr. 2	Gr. 3	Gr. 4	Gr. 5	Graded-In Gr. 6	Graded-In Gr. 7
84 / 2134	30 / 762	4231	4245	4356	4416	4469	4524	4630	4705
84 / 2134	36 / 914	4119	4136	4244	4304	4359	4412	4521	4592
84 / 2134	42 / 1067	4340	4357	4466	4526	4581	4636	4742	4815
84 / 2134	48 / 1219	5341	5359	5468	5528	5583	5637	5744	5816
84 / 2134	54 / 1372	5527	5544	5653	5713	5768	5821	5929	6002
84 / 2134	60 / 1524	5786	5804	5913	5972	6027	6080	6189	6261
84 / 2134	66 / 1676	5972	5988	6100	6158	6212	6267	6373	6448
84 / 2134	72 / 1829	6195	6211	6322	6382	6434	6488	6596	6670
84 / 2134	78 / 1981	6381	6395	6504	6564	6619	6674	6780	6854
84 / 2134	84 / 2134	6788	6804	6913	6974	7027	7080	7189	7263

To order a Custom Color for Dossier please use the code ZCCWS. A one time 897 list charge per color applies.

If Cubby Shelf is specified, add;

	Veneer Shelf with Painted Divider	Glass Shelf with Painted Divider	Solid Surface Shelf with Painted Divider
30"	677	1148	1355
36"	704	1220	1355
42"	729	1291	1355
48"	843	1453	1444
54"	869	1524	1444
60"	896	1596	1444
66"	922	1670	1444
72"	1035	1831	1532
78"	1061	1903	1532
84"	1088	1975	2265
90"	1203	2135	2354
96"	1227	2208	2354
102"	1253	2281	2354
108"	1280	2353	2354

If Satin Nickel Divider is specified, add;

30" - 42"	248
48" - 66"	370
72" - 84"	494
90" - 108"	617

If Valance is specified, add;

30" - 36"	914
42" - 48"	1134
54" - 108"	1304