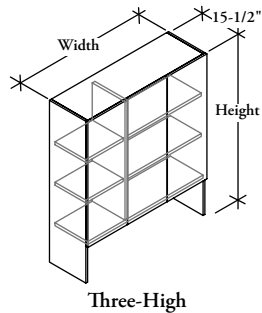


# hutch storage

## Z J H H

### Hutch – Hinged Doors



#### WHAT'S INCLUDED

1 storage cabinet, soft close hinged door(s), adjustable shelves (as specified), lock and keys (if specified), cubby (if specified), valance with light (if specified)

#### NOTES

Valance and Light are only available if no Cubby is specified.

Horizontal grain direction Veneer Group 4 only.

Flintwood available in Open Pore finish only.

#### PRODUCT OPTIONS

| Cubby Shelf                    | Height  | Configuration Height | Grain Direction                          | Width<br>(6" increments) | Door Finish   |
|--------------------------------|---|----------------------|--|--------------------------|---|
| <b>N</b> No Cubby              | <b>1</b> 70" Overall Height with 27-1/2" high surface | <b>S</b> One-High    | <b>H</b> Horizontal<br><b>V</b> Vertical | 30 - 108                 | Flintwood<br>Natural Veneer<br><b>CWS</b> Custom Wood Stain |
| <b>C</b> Cubby                 |   | <b>D</b> Two-High    |  |                          |   |
| <b>V</b> No Cubby with Valance | <b>2</b> 70" Overall Height with 29" high surface     | <b>T</b> Three-High  |  |                          |   |
|                                | <b>3</b> 84" Overall Height with 27-1/2" high surface |                      |  |                          |   |
|                                | <b>4</b> 84" Overall Height with 29" high surface     |                      |  |                          |   |

#### SAMPLE ORDER CODE

|               |          |          |          |            |           |
|---------------|----------|----------|----------|------------|-----------|
| <b>ZJHH C</b> | <b>4</b> | <b>T</b> | <b>V</b> | <b>102</b> | <b>DV</b> |
|---------------|----------|----------|----------|------------|-----------|

#### PRODUCT OPTIONS (CONTINUED)

| Case Finish                  | Panel Style              | Fabric Panel      | Lock             | Lock Finish              | Cubby Shelf Finish        | Cubby Divider Finish  |
|------------------------------|--------------------------|-------------------|------------------|--------------------------|---------------------------|-----------------------|
| Flintwood                    | <b>N</b> No Fabric Panel | Fabric COM        | <b>N</b> No Lock | <b>E</b> Ebony           | Flintwood                 | <b>A</b> Satin Nickel |
| Natural Veneer               | <b>F</b> Fabric Panel    | Fabric Gr. A      | <b>L</b> Lock    | <b>C</b> Polished Chrome | Natural Veneer            | <b>E</b> Ebony        |
| <b>CWS</b> Custom Wood Stain |                          | Fabric Gr. 1      |                  |                          | <b>7</b> Platinum         |                       |
|                              |                          | Fabric Gr. 2      |                  |                          | <b>V</b> Very White       |                       |
|                              |                          | Fabric Gr. 3      |                  |                          | <b>X</b> Anthracite       |                       |
|                              |                          | Fabric Gr. 5      |                  |                          | <b>2</b> Burnished Bronze |                       |
|                              |                          | Fabric Gr. 6      |                  |                          | <b>S</b> Sepia Bronze     |                       |
| Fabric Gr. 7                 |                          | <b>M</b> Graphite |                  |                          |                           |                       |
|                              |                          |                   |                  |                          | <b>F</b> Titanium Grey    |                       |
|                              |                          |                   |                  |                          | <b>1</b> Gilded Ash       |                       |

#### SAMPLE ORDER CODE (CONTINUED)

|           |          |             |          |          |           |          |
|-----------|----------|-------------|----------|----------|-----------|----------|
| <b>DV</b> | <b>F</b> | <b>B217</b> | <b>L</b> | <b>E</b> | <b>DV</b> | <b>A</b> |
|-----------|----------|-------------|----------|----------|-----------|----------|

See pricing on following page.

**Z J H H**  
**Hutch – Hinged Doors**  
**(Continued)**

**DIMENSIONS**  
**INCHES / MM**

| Overall "H" | Surface "H" | W          |
|-------------|-------------|------------|
| 70 / 1778   | 27.5 / 699  | 30 / 762   |
| 70 / 1778   | 27.5 / 699  | 36 / 914   |
| 70 / 1778   | 27.5 / 699  | 42 / 1067  |
| 70 / 1778   | 27.5 / 699  | 48 / 1219  |
| 70 / 1778   | 27.5 / 699  | 54 / 1372  |
| 70 / 1778   | 27.5 / 699  | 60 / 1524  |
| 70 / 1778   | 27.5 / 699  | 66 / 1676  |
| 70 / 1778   | 27.5 / 699  | 72 / 1829  |
| 70 / 1778   | 27.5 / 699  | 78 / 1981  |
| 70 / 1778   | 27.5 / 699  | 84 / 2134  |
| 70 / 1778   | 27.5 / 699  | 90 / 2286  |
| 70 / 1778   | 27.5 / 699  | 96 / 2438  |
| 70 / 1778   | 27.5 / 699  | 102 / 2591 |
| 70 / 1778   | 27.5 / 699  | 108 / 2743 |
|             |             |            |
| 70 / 1778   | 29 / 737    | 30 / 762   |
| 70 / 1778   | 29 / 737    | 36 / 914   |
| 70 / 1778   | 29 / 737    | 42 / 1067  |
| 70 / 1778   | 29 / 737    | 48 / 1219  |
| 70 / 1778   | 29 / 737    | 54 / 1372  |
| 70 / 1778   | 29 / 737    | 60 / 1524  |
| 70 / 1778   | 29 / 737    | 66 / 1676  |
| 70 / 1778   | 29 / 737    | 72 / 1829  |
| 70 / 1778   | 29 / 737    | 78 / 1981  |
| 70 / 1778   | 29 / 737    | 84 / 2134  |
| 70 / 1778   | 29 / 737    | 90 / 2286  |
| 70 / 1778   | 29 / 737    | 96 / 2438  |
| 70 / 1778   | 29 / 737    | 102 / 2591 |
| 70 / 1778   | 29 / 737    | 108 / 2743 |

**PRICING**

| ONE-HIGH (\$)  |                  |                |                  |
|----------------|------------------|----------------|------------------|
| VENEER         |                  | FLINTWOOD      |                  |
| Vertical Grain | Horizontal Grain | Vertical Grain | Horizontal Grain |
| 3286           | 3678             | 3089           | 3457             |
| 3461           | 3866             | 3255           | 3635             |
| 3640           | 4053             | 3422           | 3812             |
| 4467           | 4901             | 4199           | 4606             |
| 4643           | 5091             | 4367           | 4787             |
| 5257           | 5715             | 4940           | 5372             |
| 5433           | 5904             | 5107           | 5551             |
| 5610           | 6091             | 5273           | 5728             |
| 5786           | 6280             | 5442           | 5904             |
| 6563           | 7078             | 6169           | 6654             |
| 6740           | 7266             | 6335           | 6830             |
| 6916           | 7454             | 6502           | 7008             |
| 7092           | 7644             | 6665           | 7185             |
| 7269           | 7830             | 6832           | 7360             |
|                |                  |                |                  |
| 3257           | 3646             | 3062           | 3428             |
| 3432           | 3831             | 3227           | 3603             |
| 3606           | 4019             | 3391           | 3779             |
| 4432           | 4865             | 4166           | 4574             |
| 4605           | 5051             | 4329           | 4749             |
| 5220           | 5675             | 4903           | 5335             |
| 5394           | 5859             | 5069           | 5509             |
| 5568           | 6047             | 5230           | 5683             |
| 5740           | 6234             | 5396           | 5859             |
| 6516           | 7027             | 6125           | 6605             |
| 6690           | 7214             | 6290           | 6781             |
| 6865           | 7400             | 6453           | 6955             |
| 7038           | 7588             | 6617           | 7132             |
| 7214           | 7772             | 6781           | 7307             |

**DIMENSIONS**  
**INCHES / MM**

| Overall "H" | Surface "H" | W          |
|-------------|-------------|------------|
| 84 / 2134   | 27.5 / 699  | 30 / 762   |
| 84 / 2134   | 27.5 / 699  | 36 / 914   |
| 84 / 2134   | 27.5 / 699  | 42 / 1067  |
| 84 / 2134   | 27.5 / 699  | 48 / 1219  |
| 84 / 2134   | 27.5 / 699  | 54 / 1372  |
| 84 / 2134   | 27.5 / 699  | 60 / 1524  |
| 84 / 2134   | 27.5 / 699  | 66 / 1676  |
| 84 / 2134   | 27.5 / 699  | 72 / 1829  |
| 84 / 2134   | 27.5 / 699  | 78 / 1981  |
| 84 / 2134   | 27.5 / 699  | 84 / 2134  |
| 84 / 2134   | 27.5 / 699  | 90 / 2286  |
| 84 / 2134   | 27.5 / 699  | 96 / 2438  |
| 84 / 2134   | 27.5 / 699  | 102 / 2591 |
| 84 / 2134   | 27.5 / 699  | 108 / 2743 |
|             |             |            |
| 84 / 2134   | 29 / 737    | 30 / 762   |
| 84 / 2134   | 29 / 737    | 36 / 914   |
| 84 / 2134   | 29 / 737    | 42 / 1067  |
| 84 / 2134   | 29 / 737    | 48 / 1219  |
| 84 / 2134   | 29 / 737    | 54 / 1372  |
| 84 / 2134   | 29 / 737    | 60 / 1524  |
| 84 / 2134   | 29 / 737    | 66 / 1676  |
| 84 / 2134   | 29 / 737    | 72 / 1829  |
| 84 / 2134   | 29 / 737    | 78 / 1981  |
| 84 / 2134   | 29 / 737    | 84 / 2134  |
| 84 / 2134   | 29 / 737    | 90 / 2286  |
| 84 / 2134   | 29 / 737    | 96 / 2438  |
| 84 / 2134   | 29 / 737    | 102 / 2591 |
| 84 / 2134   | 29 / 737    | 108 / 2743 |

**PRICING**

| ONE-HIGH (\$)  |                  |                |                  |
|----------------|------------------|----------------|------------------|
| VENEER         |                  | FLINTWOOD      |                  |
| Vertical Grain | Horizontal Grain | Vertical Grain | Horizontal Grain |
| 3756           | 4166             | 3531           | 3915             |
| 3953           | 4373             | 3714           | 4111             |
| 4145           | 4582             | 3898           | 4307             |
| 4993           | 5449             | 4693           | 5123             |
| 5188           | 5657             | 4877           | 5319             |
| 5821           | 6302             | 5471           | 5924             |
| 6016           | 6509             | 5653           | 6118             |
| 6207           | 6718             | 5835           | 6315             |
| 6403           | 6925             | 6019           | 6511             |
| 7198           | 7743             | 6767           | 7278             |
| 7394           | 7949             | 6950           | 7473             |
| 7590           | 8157             | 7134           | 7669             |
| 7782           | 8367             | 7315           | 7864             |
| 7976           | 8576             | 7498           | 8060             |
|                |                  |                |                  |
| 3728           | 4134             | 3503           | 3885             |
| 3921           | 4341             | 3688           | 4080             |
| 4112           | 4546             | 3866           | 4275             |
| 4958           | 5411             | 4662           | 5089             |
| 5149           | 5618             | 4842           | 5280             |
| 5780           | 6259             | 5432           | 5882             |
| 5973           | 6467             | 5613           | 6078             |
| 6164           | 6672             | 5794           | 6271             |
| 6358           | 6878             | 5977           | 6465             |
| 7150           | 7693             | 6721           | 7231             |
| 7345           | 7898             | 6907           | 7424             |
| 7537           | 8104             | 7086           | 7618             |
| 7729           | 8310             | 7266           | 7811             |
| 7920           | 8514             | 7445           | 8003             |

Pricing is continued on the following page.

## Z J H H

### Hutch – Hinged Doors (Continued)

#### DIMENSIONS INCHES / MM

| Overall "H" | Surface "H" | W          |
|-------------|-------------|------------|
| 70 / 1778   | 27.5 / 699  | 30 / 762   |
| 70 / 1778   | 27.5 / 699  | 36 / 914   |
| 70 / 1778   | 27.5 / 699  | 42 / 1067  |
| 70 / 1778   | 27.5 / 699  | 48 / 1219  |
| 70 / 1778   | 27.5 / 699  | 54 / 1372  |
| 70 / 1778   | 27.5 / 699  | 60 / 1524  |
| 70 / 1778   | 27.5 / 699  | 66 / 1676  |
| 70 / 1778   | 27.5 / 699  | 72 / 1829  |
| 70 / 1778   | 27.5 / 699  | 78 / 1981  |
| 70 / 1778   | 27.5 / 699  | 84 / 2134  |
| 70 / 1778   | 27.5 / 699  | 90 / 2286  |
| 70 / 1778   | 27.5 / 699  | 96 / 2438  |
| 70 / 1778   | 27.5 / 699  | 102 / 2591 |
| 70 / 1778   | 27.5 / 699  | 108 / 2743 |
| 70 / 1778   | 29 / 737    | 30 / 762   |
| 70 / 1778   | 29 / 737    | 36 / 914   |
| 70 / 1778   | 29 / 737    | 42 / 1067  |
| 70 / 1778   | 29 / 737    | 48 / 1219  |
| 70 / 1778   | 29 / 737    | 54 / 1372  |
| 70 / 1778   | 29 / 737    | 60 / 1524  |
| 70 / 1778   | 29 / 737    | 66 / 1676  |
| 70 / 1778   | 29 / 737    | 72 / 1829  |
| 70 / 1778   | 29 / 737    | 78 / 1981  |
| 70 / 1778   | 29 / 737    | 84 / 2134  |
| 70 / 1778   | 29 / 737    | 90 / 2286  |
| 70 / 1778   | 29 / 737    | 96 / 2438  |
| 70 / 1778   | 29 / 737    | 102 / 2591 |
| 70 / 1778   | 29 / 737    | 108 / 2743 |

#### PRICING

| TWO-HIGH (D)   |                  |                |                  |
|----------------|------------------|----------------|------------------|
| VENEER         |                  | FLINTWOOD      |                  |
| Vertical Grain | Horizontal Grain | Vertical Grain | Horizontal Grain |
| 3818           | 4232             | 3588           | 3980             |
| 4062           | 4492             | 3818           | 4222             |
| 4305           | 4753             | 4046           | 4466             |
| 5377           | 5855             | 5053           | 5503             |
| 5620           | 6114             | 5283           | 5747             |
| 6397           | 6910             | 6016           | 6495             |
| 6642           | 7171             | 6242           | 6740             |
| 6886           | 7430             | 6472           | 6983             |
| 7127           | 7688             | 6700           | 7227             |
| 8249           | 8838             | 7752           | 8308             |
| 8490           | 9098             | 7978           | 8552             |
| 8734           | 9358             | 8209           | 8794             |
| 8978           | 9616             | 8439           | 9041             |
| 9221           | 9879             | 8666           | 9286             |
| 3787           | 4199             | 3561           | 3949             |
| 4031           | 4460             | 3787           | 4192             |
| 4273           | 4718             | 4017           | 4434             |
| 5342           | 5816             | 5020           | 5467             |
| 5582           | 6075             | 5250           | 5708             |
| 6359           | 6867             | 5977           | 6455             |
| 6599           | 7125             | 6205           | 6699             |
| 6841           | 7385             | 6431           | 6940             |
| 7085           | 7641             | 6658           | 7183             |
| 8200           | 8787             | 7707           | 8258             |
| 8440           | 9046             | 7933           | 8503             |
| 8683           | 9304             | 8163           | 8745             |
| 8924           | 9562             | 8387           | 8989             |
| 9165           | 9818             | 8614           | 9230             |

#### THREE-HIGHT)

| VENEER         |                  | FLINTWOOD      |                  |
|----------------|------------------|----------------|------------------|
| Vertical Grain | Horizontal Grain | Vertical Grain | Horizontal Grain |
| 10750          | 11410            | 10106          | 10723            |

#### DIMENSIONS INCHES / MM

| Overall "H" | Surface "H" | W          |
|-------------|-------------|------------|
| 84 / 2134   | 27.5 / 699  | 30 / 762   |
| 84 / 2134   | 27.5 / 699  | 36 / 914   |
| 84 / 2134   | 27.5 / 699  | 42 / 1067  |
| 84 / 2134   | 27.5 / 699  | 48 / 1219  |
| 84 / 2134   | 27.5 / 699  | 54 / 1372  |
| 84 / 2134   | 27.5 / 699  | 60 / 1524  |
| 84 / 2134   | 27.5 / 699  | 66 / 1676  |
| 84 / 2134   | 27.5 / 699  | 72 / 1829  |
| 84 / 2134   | 27.5 / 699  | 78 / 1981  |
| 84 / 2134   | 27.5 / 699  | 84 / 2134  |
| 84 / 2134   | 27.5 / 699  | 90 / 2286  |
| 84 / 2134   | 27.5 / 699  | 96 / 2438  |
| 84 / 2134   | 27.5 / 699  | 102 / 2591 |
| 84 / 2134   | 27.5 / 699  | 108 / 2743 |
| 84 / 2134   | 29 / 737    | 30 / 762   |
| 84 / 2134   | 29 / 737    | 36 / 914   |
| 84 / 2134   | 29 / 737    | 42 / 1067  |
| 84 / 2134   | 29 / 737    | 48 / 1219  |
| 84 / 2134   | 29 / 737    | 54 / 1372  |
| 84 / 2134   | 29 / 737    | 60 / 1524  |
| 84 / 2134   | 29 / 737    | 66 / 1676  |
| 84 / 2134   | 29 / 737    | 72 / 1829  |
| 84 / 2134   | 29 / 737    | 78 / 1981  |
| 84 / 2134   | 29 / 737    | 84 / 2134  |
| 84 / 2134   | 29 / 737    | 90 / 2286  |
| 84 / 2134   | 29 / 737    | 96 / 2438  |
| 84 / 2134   | 29 / 737    | 102 / 2591 |
| 84 / 2134   | 29 / 737    | 108 / 2743 |

#### PRICING

| TWO-HIGH (D)   |                  |                |                  |
|----------------|------------------|----------------|------------------|
| VENEER         |                  | FLINTWOOD      |                  |
| Vertical Grain | Horizontal Grain | Vertical Grain | Horizontal Grain |
| 4287           | 4721             | 4031           | 4437             |
| 4550           | 5000             | 4277           | 4699             |
| 4812           | 5280             | 4522           | 4964             |
| 6000           | 6497             | 5639           | 6109             |
| 6261           | 6779             | 5884           | 6372             |
| 6961           | 7496             | 6541           | 7046             |
| 7221           | 7773             | 6789           | 7308             |
| 7481           | 8054             | 7034           | 7569             |
| 7744           | 8332             | 7279           | 7832             |
| 8881           | 9500             | 8350           | 8933             |
| 9143           | 9782             | 8594           | 9194             |
| 9405           | 10062            | 8842           | 9459             |
| 9669           | 10341            | 9086           | 9722             |
| 9930           | 10621            | 9333           | 9982             |
| 4258           | 4689             | 4002           | 4407             |
| 4518           | 4966             | 4248           | 4669             |
| 4778           | 5246             | 4492           | 4929             |
| 5962           | 6460             | 5606           | 6073             |
| 6225           | 6738             | 5852           | 6334             |
| 6921           | 7453             | 6505           | 7006             |
| 7179           | 7729             | 6748           | 7266             |
| 7440           | 8006             | 6995           | 7527             |
| 7700           | 8286             | 7237           | 7789             |
| 8835           | 9451             | 8303           | 8883             |
| 9096           | 9729             | 8549           | 9144             |
| 9353           | 10006            | 8792           | 9405             |
| 9613           | 10285            | 9038           | 9669             |
| 9874           | 10562            | 9282           | 9930             |

#### THREE-HIGH (T)

| VENEER         |                  | FLINTWOOD      |                  |
|----------------|------------------|----------------|------------------|
| Vertical Grain | Horizontal Grain | Vertical Grain | Horizontal Grain |
| 10703          | 11358            | 10061          | 10677            |

Hutches 96"W-108"W specified with tackboard option will receive a two section tackboard.

Pricing is continued on the following page.

**Z J H H**  
**Hutch – Hinged Doors**  
**(Continued)**

**DIMENSIONS**  
**INCHES / MM**

| Overall "H" | W          |
|-------------|------------|
| 70 / 1778   | 30 / 762   |
| 70 / 1778   | 36 / 914   |
| 70 / 1778   | 42 / 1067  |
| 70 / 1778   | 48 / 1219  |
| 70 / 1778   | 54 / 1372  |
| 70 / 1778   | 60 / 1524  |
| 70 / 1778   | 66 / 1676  |
| 70 / 1778   | 72 / 1829  |
| 70 / 1778   | 78 / 1981  |
| 70 / 1778   | 84 / 2134  |
| 70 / 1778   | 90 / 2286  |
| 70 / 1778   | 96 / 2438  |
| 70 / 1778   | 102 / 2591 |
| 70 / 1778   | 108 / 2743 |
| 84 / 2134   | 30 / 762   |
| 84 / 2134   | 36 / 914   |
| 84 / 2134   | 42 / 1067  |
| 84 / 2134   | 48 / 1219  |
| 84 / 2134   | 54 / 1372  |
| 84 / 2134   | 60 / 1524  |
| 84 / 2134   | 66 / 1676  |
| 84 / 2134   | 72 / 1829  |
| 84 / 2134   | 78 / 1981  |
| 84 / 2134   | 84 / 2134  |
| 84 / 2134   | 90 / 2286  |
| 84 / 2134   | 96 / 2438  |
| 84 / 2134   | 102 / 2591 |
| 84 / 2134   | 108 / 2743 |

**PRICING**

**ONE-HIGH – 27.5" & 29" SURFACE HEIGHT**

**IF FABRIC PANEL IS SPECIFIED**

**HORIZONTAL (CUBBY & NO CUBBY)**

| Gr. A/<br>COM | Gr. 1 | Gr. 2 | Gr. 3 | Gr. 4 | Gr. 5 | Graded-In<br>Gr. 6 | Graded-In<br>Gr. 7 |
|---------------|-------|-------|-------|-------|-------|--------------------|--------------------|
| 4786          | 4806  | 4951  | 5026  | 5101  | 5171  | 5312               | 5408               |
| 5000          | 5020  | 5167  | 5246  | 5315  | 5385  | 5529               | 5624               |
| 5261          | 5284  | 5429  | 5505  | 5577  | 5649  | 5790               | 5886               |
| 6136          | 6158  | 6302  | 6381  | 6453  | 6525  | 6664               | 6763               |
| 6354          | 6374  | 6517  | 6596  | 6669  | 6740  | 6882               | 6976               |
| 7005          | 7025  | 7171  | 7249  | 7320  | 7389  | 7531               | 7628               |
| 7219          | 7240  | 7386  | 7465  | 7535  | 7605  | 7748               | 7844               |
| 7481          | 7504  | 7649  | 7727  | 7799  | 7871  | 8010               | 8108               |
| 7697          | 7719  | 7862  | 7941  | 8013  | 8083  | 8226               | 8322               |
| 8524          | 8543  | 8687  | 8765  | 8838  | 8908  | 9050               | 9145               |
| 8735          | 8757  | 8903  | 8981  | 9051  | 9120  | 9264               | 9359               |
| 8999          | 9020  | 9166  | 9244  | 9315  | 9387  | 9528               | 9623               |
| 9215          | 9235  | 9381  | 9460  | 9529  | 9601  | 9742               | 9841               |
| 9535          | 9564  | 9759  | 9861  | 9959  | 10053 | 10240              | 10370              |
| 5392          | 5411  | 5555  | 5635  | 5706  | 5779  | 5917               | 6017               |
| 5638          | 5658  | 5803  | 5881  | 5953  | 6026  | 6165               | 6263               |
| 5936          | 5957  | 6102  | 6178  | 6250  | 6321  | 6462               | 6560               |
| 6845          | 6865  | 7009  | 7089  | 7158  | 7230  | 7372               | 7469               |
| 7092          | 7113  | 7259  | 7337  | 7405  | 7477  | 7620               | 7716               |
| 7775          | 7799  | 7943  | 8021  | 8092  | 8164  | 8303               | 8403               |
| 8024          | 8046  | 8190  | 8268  | 8339  | 8410  | 8552               | 8649               |
| 8322          | 8342  | 8488  | 8565  | 8636  | 8706  | 8850               | 8945               |
| 8572          | 8589  | 8735  | 8814  | 8883  | 8958  | 9098               | 9194               |
| 9430          | 9447  | 9593  | 9672  | 9742  | 9815  | 9956               | 10053              |
| 9674          | 9695  | 9841  | 9918  | 9990  | 10062 | 10202              | 10298              |
| 9973          | 9992  | 10138 | 10215 | 10288 | 10356 | 10500              | 10595              |
| 0222          | 10240 | 10384 | 10464 | 10535 | 10607 | 10747              | 10845              |
| 0576          | 10602 | 10797 | 10903 | 10998 | 11091 | 11280              | 11410              |

**TWO-HIGH – 27.5" & 29" SURFACE HEIGHT**

**IF FABRIC PANEL IS SPECIFIED**

**HORIZONTAL (CUBBY & NO CUBBY)**

| Gr. A/<br>COM | Gr. 1 | Gr. 2 | Gr. 3 | Gr. 4 | Gr. 5 | Graded-In<br>Gr. 6 | Graded-In<br>Gr. 7 |
|---------------|-------|-------|-------|-------|-------|--------------------|--------------------|
| 5222          | 5242  | 5386  | 5466  | 5536  | 5609  | 5750               | 5846               |
| 5494          | 5517  | 5661  | 5739  | 5812  | 5880  | 6025               | 6118               |
| 5816          | 5836  | 5982  | 6061  | 6131  | 6204  | 6344               | 6441               |
| 6931          | 6951  | 7096  | 7176  | 7248  | 7316  | 7461               | 7554               |
| 7204          | 7224  | 7367  | 7446  | 7519  | 7591  | 7730               | 7828               |
| 8010          | 8033  | 8176  | 8256  | 8328  | 8400  | 8540               | 8635               |
| 8285          | 8303  | 8452  | 8528  | 8599  | 8671  | 8813               | 8909               |
| 8607          | 8628  | 8773  | 8851  | 8922  | 8992  | 9136               | 9230               |
| 8877          | 8900  | 9043  | 9120  | 9193  | 9264  | 9405               | 9500               |
| 0040          | 10062 | 10206 | 10285 | 10355 | 10424 | 10568              | 10666              |
| 0314          | 10333 | 10478 | 10555 | 10627 | 10700 | 10841              | 10935              |
| 0634          | 10656 | 10800 | 10880 | 10950 | 11019 | 11162              | 11260              |
| 0909          | 10926 | 11073 | 11151 | 11221 | 11294 | 11438              | 11532              |
| 1289          | 11315 | 11508 | 11614 | 11709 | 11804 | 11992              | 12120              |

Hutches 96"W-108"W specified with tackboard option will receive a two section tackboard.

Pricing is continued on the following page.

# hutch storage

## Z J H H

### Hutch – Hinged Doors (Continued)

#### DIMENSIONS INCHES / MM

| Overall "H" | W          |
|-------------|------------|
| 84 / 2134   | 30 / 762   |
| 84 / 2134   | 36 / 914   |
| 84 / 2134   | 42 / 1067  |
| 84 / 2134   | 48 / 1219  |
| 84 / 2134   | 54 / 1372  |
| 84 / 2134   | 60 / 1524  |
| 84 / 2134   | 66 / 1676  |
| 84 / 2134   | 72 / 1829  |
| 84 / 2134   | 78 / 1981  |
| 84 / 2134   | 84 / 2134  |
| 84 / 2134   | 90 / 2286  |
| 84 / 2134   | 96 / 2438  |
| 84 / 2134   | 102 / 2591 |
| 84 / 2134   | 108 / 2743 |

#### PRICING

##### TWO-HIGH – 27.5" & 29" SURFACE HEIGHT

##### IF FABRIC PANEL IS SPECIFIED

##### HORIZONTAL (CUBBY & NO CUBBY)

| Gr. A/<br>COM | Gr. 1 | Gr. 2 | Gr. 3 | Gr. 4 | Gr. 5 | Graded-In<br>Gr. 6 | Graded-In<br>Gr. 7 |
|---------------|-------|-------|-------|-------|-------|--------------------|--------------------|
| 5759          | 5781  | 5924  | 6003  | 6076  | 6146  | 6288               | 6385               |
| 6051          | 6075  | 6216  | 6294  | 6366  | 6439  | 6582               | 6676               |
| 6393          | 6414  | 6559  | 6638  | 6708  | 6779  | 6921               | 7017               |
| 7622          | 7646  | 7789  | 7868  | 7937  | 8009  | 8152               | 8249               |
| 7917          | 7937  | 8082  | 8162  | 8233  | 8302  | 8446               | 8541               |
| 8645          | 8668  | 8813  | 8891  | 8962  | 9032  | 9176               | 9270               |
| 8938          | 8960  | 9105  | 9183  | 9254  | 9323  | 9467               | 9563               |
| 9280          | 9303  | 9445  | 9522  | 9594  | 9666  | 9810               | 9903               |
| 9571          | 9593  | 9736  | 9816  | 9888  | 9960  | 10099              | 10196              |
| 10752         | 10774 | 10919 | 10999 | 11070 | 11137 | 11282              | 11378              |
| 1044          | 11065 | 11210 | 11290 | 11360 | 11431 | 11572              | 11670              |
| 1385          | 11410 | 11552 | 11630 | 11703 | 11772 | 11914              | 12011              |
| 1680          | 11700 | 11845 | 11921 | 11993 | 12065 | 12207              | 12304              |
| 2079          | 12108 | 12301 | 12404 | 12498 | 12593 | 12782              | 12912              |

##### THREE-HIGH – 27.5" SURFACE HEIGHT

##### IF FABRIC PANEL IS SPECIFIED

##### HORIZONTAL (CUBBY & NO CUBBY)

| Gr. A/<br>COM | Gr. 1     | Gr. 2 | Gr. 3 | Gr. 4 | Gr. 5 | Graded-In<br>Gr. 6 | Graded-In<br>Gr. 7 |       |       |
|---------------|-----------|-------|-------|-------|-------|--------------------|--------------------|-------|-------|
| 84 / 2134     | 84 / 2134 | 12562 | 12580 | 12726 | 12803 | 12876              | 12944              | 13088 | 13183 |

If Lock (L) is specified, add 93 per lock

To order a Custom Color for Dossier please use the code ZCCWS. A one time 978 list charge per color applies.

If Cubby Shelf is specified, add;

|      | Veneer Shelf with<br>Painted Divider | Glass Shelf with<br>Painted Divider | Solid Surface Shelf with<br>Painted Divider |
|------|--------------------------------------|-------------------------------------|---|
| 30"  | 893                                  | 1511                                | 1784  |
| 36"  | 928                                  | 1607                                | 1784  |
| 42"  | 960                                  | 1701                                | 1784  |
| 48"  | 1110                                 | 1913                                | 1901  |
| 54"  | 1145                                 | 2007                                | 1901  |
| 60"  | 1181                                 | 2101                                | 1901  |
| 66"  | 1215                                 | 2199                                | 1901  |
| 72"  | 1363                                 | 2410                                | 2017  |
| 78"  | 1398                                 | 2506                                | 2017  |
| 84"  | 1433                                 | 2724                                | 3125  |
| 90"  | 1585                                 | 2945                                | 3246  |
| 96"  | 1616                                 | 3046                                | 3246  |
| 102" | 1651                                 | 3146                                | 3246  |
| 108" | 1685                                 | 3243                                | 3246  |

If Satin Nickel Divider is specified, add;

|            |     |
|------------|-----|
| 30" - 42"  | 329 |
| 48" - 66"  | 488 |
| 72" - 84"  | 652 |
| 90" - 108" | 813 |

If Valance is specified, add;

|            |      |
|------------|------|
| 30" - 36"  | 1204 |
| 42" - 48"  | 1494 |
| 54" - 108" | 1717 |

Hutches 96"W-108"W specified with tackboard option will receive a two section tackboard.

Pricing is continued on the following page.

# Z J H H

## Hutch – Hinged Doors (Continued)

**DIMENSIONS  
INCHES / MM**

| Overall "H" | W          |
|-------------|------------|
| 70 / 1778   | 30 / 762   |
| 70 / 1778   | 36 / 914   |
| 70 / 1778   | 42 / 1067  |
| 70 / 1778   | 48 / 1219  |
| 70 / 1778   | 54 / 1372  |
| 70 / 1778   | 60 / 1524  |
| 70 / 1778   | 66 / 1676  |
| 70 / 1778   | 72 / 1829  |
| 70 / 1778   | 78 / 1981  |
| 70 / 1778   | 84 / 2134  |
| 70 / 1778   | 90 / 2286  |
| 70 / 1778   | 96 / 2438  |
| 70 / 1778   | 102 / 2591 |
| 70 / 1778   | 108 / 2743 |
| 84 / 2134   | 30 / 762   |
| 84 / 2134   | 36 / 914   |
| 84 / 2134   | 42 / 1067  |
| 84 / 2134   | 48 / 1219  |
| 84 / 2134   | 54 / 1372  |
| 84 / 2134   | 60 / 1524  |
| 84 / 2134   | 66 / 1676  |
| 84 / 2134   | 72 / 1829  |
| 84 / 2134   | 78 / 1981  |
| 84 / 2134   | 84 / 2134  |
| 84 / 2134   | 90 / 2286  |
| 84 / 2134   | 96 / 2438  |
| 84 / 2134   | 102 / 2591 |
| 84 / 2134   | 108 / 2743 |

**PRICING**

| ONE-HIGH – 27.5" & 29" SURFACE HEIGHT |       |       |       |       |       |                    |                    |  |
|---------------------------------------|-------|-------|-------|-------|-------|--------------------|--------------------|--|
| IF FABRIC PANEL IS SPECIFIED          |       |       |       |       |       |                    |                    |  |
| VERTICAL (CUBBY & NO CUBBY)           |       |       |       |       |       |                    |                    |  |
| Gr. A/<br>COM                         | Gr. 1 | Gr. 2 | Gr. 3 | Gr. 4 | Gr. 5 | Graded-In<br>Gr. 6 | Graded-In<br>Gr. 7 |  |
| 4395                                  | 4417  | 4559  | 4639  | 4712  | 4782  | 4924               | 5019               |  |
| 4598                                  | 4617  | 4762  | 4842  | 4914  | 4982  | 5127               | 5222               |  |
| 4848                                  | 4872  | 5016  | 5092  | 5165  | 5235  | 5378               | 5473               |  |
| 5704                                  | 5725  | 5868  | 5947  | 6019  | 6089  | 6233               | 6328               |  |
| 5908                                  | 5929  | 6073  | 6151  | 6223  | 6293  | 6436               | 6532               |  |
| 6545                                  | 6567  | 6711  | 6791  | 6860  | 6933  | 7073               | 7172               |  |
| 6748                                  | 6770  | 6915  | 6995  | 7064  | 7136  | 7277               | 7374               |  |
| 7001                                  | 7020  | 7168  | 7242  | 7315  | 7387  | 7527               | 7624               |  |
| 7204                                  | 7224  | 7367  | 7446  | 7519  | 7591  | 7730               | 7828               |  |
| 8006                                  | 8030  | 8172  | 8252  | 8323  | 8394  | 8535               | 8633               |  |
| 8208                                  | 8231  | 8375  | 8455  | 8526  | 8594  | 8737               | 8833               |  |
| 8461                                  | 8484  | 8628  | 8705  | 8779  | 8848  | 8991               | 9085               |  |
| 8664                                  | 8684  | 8829  | 8908  | 8980  | 9050  | 9192               | 9288               |  |
| 8974                                  | 9002  | 9195  | 9300  | 9395  | 9490  | 9680               | 9809               |  |
| 4982                                  | 5003  | 5146  | 5226  | 5298  | 5370  | 5510               | 5607               |  |
| 5219                                  | 5239  | 5382  | 5461  | 5532  | 5604  | 5745               | 5841               |  |
| 5500                                  | 5520  | 5664  | 5743  | 5815  | 5884  | 6029               | 6124               |  |
| 6387                                  | 6409  | 6554  | 6632  | 6704  | 6772  | 6915               | 7012               |  |
| 6621                                  | 6643  | 6788  | 6866  | 6938  | 7009  | 7149               | 7248               |  |
| 7295                                  | 7315  | 7461  | 7538  | 7608  | 7680  | 7823               | 7918               |  |
| 7528                                  | 7550  | 7694  | 7772  | 7845  | 7916  | 8056               | 8154               |  |
| 7811                                  | 7831  | 7976  | 8055  | 8126  | 8198  | 8339               | 8437               |  |
| 8047                                  | 8068  | 8210  | 8289  | 8361  | 8432  | 8576               | 8671               |  |
| 8882                                  | 8905  | 9048  | 9128  | 9199  | 9270  | 9411               | 9510               |  |
| 9118                                  | 9140  | 9285  | 9362  | 9434  | 9506  | 9645               | 9742               |  |
| 9403                                  | 9424  | 9567  | 9645  | 9718  | 9787  | 9931               | 10026              |  |
| 9637                                  | 9656  | 9801  | 9880  | 9949  | 10022 | 10165              | 10261              |  |
| 9977                                  | 10006 | 10199 | 10303 | 10399 | 10495 | 10681              | 10808              |  |

| TWO-HIGH – 27.5" & 29" SURFACE HEIGHT |       |       |       |       |       |                    |                    |  |
|---------------------------------------|-------|-------|-------|-------|-------|--------------------|--------------------|--|
| IF FABRIC PANEL IS SPECIFIED          |       |       |       |       |       |                    |                    |  |
| VERTICAL (CUBBY & NO CUBBY)           |       |       |       |       |       |                    |                    |  |
| Gr. A/<br>COM                         | Gr. 1 | Gr. 2 | Gr. 3 | Gr. 4 | Gr. 5 | Graded-In<br>Gr. 6 | Graded-In<br>Gr. 7 |  |
| 4808                                  | 4830  | 4973  | 5052  | 5124  | 5196  | 5337               | 5432               |  |
| 5063                                  | 5087  | 5229  | 5309  | 5381  | 5451  | 5594               | 5690               |  |
| 5370                                  | 5389  | 5533  | 5612  | 5683  | 5755  | 5899               | 5993               |  |
| 6453                                  | 6475  | 6619  | 6699  | 6769  | 6839  | 6982               | 7077               |  |
| 6709                                  | 6731  | 6875  | 6953  | 7025  | 7096  | 7237               | 7336               |  |
| 7501                                  | 7521  | 7666  | 7744  | 7816  | 7886  | 8030               | 8123               |  |
| 7757                                  | 7775  | 7922  | 8001  | 8074  | 8143  | 8285               | 8380               |  |
| 8061                                  | 8083  | 8228  | 8308  | 8378  | 8448  | 8589               | 8686               |  |
| 8318                                  | 8338  | 8484  | 8560  | 8633  | 8703  | 8844               | 8940               |  |
| 9448                                  | 9470  | 9614  | 9694  | 9765  | 9836  | 9977               | 10075              |  |
| 9702                                  | 9727  | 9870  | 9947  | 10020 | 10092 | 10232              | 10329              |  |
| 0011                                  | 10031 | 10177 | 10254 | 10326 | 10395 | 10539              | 10634              |  |
| 0267                                  | 10288 | 10433 | 10508 | 10582 | 10653 | 10796              | 10889              |  |
| 0628                                  | 10657 | 10851 | 10954 | 11049 | 11145 | 11333              | 11461              |  |

Hutches 96"W-108"W specified with tackboard option will receive a two section tackboard.

Pricing is continued on the following page.

# hutch storage

## Z J H H

### Hutch – Hinged Doors (Continued)

#### DIMENSIONS INCHES / MM

| Overall "H" | W          |
|-------------|------------|
| 84 / 2134   | 30 / 762   |
| 84 / 2134   | 36 / 914   |
| 84 / 2134   | 42 / 1067  |
| 84 / 2134   | 48 / 1219  |
| 84 / 2134   | 54 / 1372  |
| 84 / 2134   | 60 / 1524  |
| 84 / 2134   | 66 / 1676  |
| 84 / 2134   | 72 / 1829  |
| 84 / 2134   | 78 / 1981  |
| 84 / 2134   | 84 / 2134  |
| 84 / 2134   | 90 / 2286  |
| 84 / 2134   | 96 / 2438  |
| 84 / 2134   | 102 / 2591 |
| 84 / 2134   | 108 / 2743 |

#### PRICING

| TWO-HIGH – 27.5" & 29" SURFACE HEIGHT |       |       |       |       |       |                    |                    |  |
|---------------------------------------|-------|-------|-------|-------|-------|--------------------|--------------------|--|
| IF FABRIC PANEL IS SPECIFIED          |       |       |       |       |       |                    |                    |  |
| VERTICAL (CUBBY & NO CUBBY)           |       |       |       |       |       |                    |                    |  |
| Gr. A/<br>COM                         | Gr. 1 | Gr. 2 | Gr. 3 | Gr. 4 | Gr. 5 | Graded-In<br>Gr. 6 | Graded-In<br>Gr. 7 |  |
| 5327                                  | 5348  | 5493  | 5573  | 5642  | 5711  | 5856               | 5952               |  |
| 5602                                  | 5623  | 5766  | 5845  | 5915  | 5988  | 6129               | 6227               |  |
| 5924                                  | 5946  | 6089  | 6168  | 6240  | 6312  | 6453               | 6549               |  |
| 7125                                  | 7147  | 7293  | 7367  | 7440  | 7512  | 7653               | 7750               |  |
| 7400                                  | 7421  | 7564  | 7644  | 7715  | 7786  | 7929               | 8024               |  |
| 8111                                  | 8133  | 8279  | 8357  | 8427  | 8497  | 8639               | 8735               |  |
| 8384                                  | 8407  | 8550  | 8629  | 8701  | 8773  | 8912               | 9010               |  |
| 8707                                  | 8730  | 8875  | 8953  | 9024  | 9096  | 9236               | 9333               |  |
| 8983                                  | 9003  | 9147  | 9228  | 9299  | 9370  | 9512               | 9608               |  |
| 10130                                 | 10153 | 10298 | 10377 | 10449 | 10520 | 10660              | 10757              |  |
| 10408                                 | 10426 | 10572 | 10651 | 10721 | 10795 | 10934              | 11033              |  |
| 10730                                 | 10752 | 10895 | 10975 | 11047 | 11117 | 11260              | 11355              |  |
| 11005                                 | 11028 | 11172 | 11249 | 11322 | 11391 | 11533              | 11629              |  |
| 11387                                 | 11416 | 11609 | 11713 | 11808 | 11903 | 12093              | 12219              |  |

| THREE-HIGH – 27.5" SURFACE HEIGHT |       |       |       |       |       |                    |                    |  |
|-----------------------------------|-------|-------|-------|-------|-------|--------------------|--------------------|--|
| IF FABRIC PANEL IS SPECIFIED      |       |       |       |       |       |                    |                    |  |
| VERTICAL (CUBBY & NO CUBBY)       |       |       |       |       |       |                    |                    |  |
| Gr. A/<br>COM                     | Gr. 1 | Gr. 2 | Gr. 3 | Gr. 4 | Gr. 5 | Graded-In<br>Gr. 6 | Graded-In<br>Gr. 7 |  |
| 12562                             | 12580 | 12726 | 12803 | 12876 | 12944 | 13088              | 13183              |  |

If Lock (L) is specified, add 93 per lock

To order a Custom Color for Dossier please use the code ZCCWS. A one time 978 list charge per color applies.

If Cubby Shelf is specified, add;

|      | Veneer Shelf with<br>Painted Divider | Glass Shelf with<br>Painted Divider | Solid Surface Shelf with<br>Painted Divider |
|------|--------------------------------------|-------------------------------------|---|
| 30"  | 893                                  | 1511                                | 1784  |
| 36"  | 928                                  | 1607                                | 1784  |
| 42"  | 960                                  | 1701                                | 1784  |
| 48"  | 1110                                 | 1913                                | 1901  |
| 54"  | 1145                                 | 2007                                | 1901  |
| 60"  | 1181                                 | 2101                                | 1901  |
| 66"  | 1215                                 | 2199                                | 1901  |
| 72"  | 1363                                 | 2410                                | 2017  |
| 78"  | 1398                                 | 2506                                | 2017  |
| 84"  | 1433                                 | 2724                                | 3125  |
| 90"  | 1585                                 | 2945                                | 3246  |
| 96"  | 1616                                 | 3046                                | 3246  |
| 102" | 1651                                 | 3146                                | 3246  |
| 108" | 1685                                 | 3243                                | 3246  |

If Satin Nickel Divider is specified, add;

|            |     |
|------------|-----|
| 30" - 42"  | 329 |
| 48" - 66"  | 488 |
| 72" - 84"  | 652 |
| 90" - 108" | 813 |

If Valance is specified, add;

|            |      |
|------------|------|
| 30" - 36"  | 1204 |
| 42" - 48"  | 1494 |
| 54" - 108" | 1717 |

Hutches 96"W-108"W specified with tackboard option will receive a two section tackboard.