

**WHAT'S INCLUDED**

1 bridge return with full back panel, worksurface grommet (if specified), connection hardware.

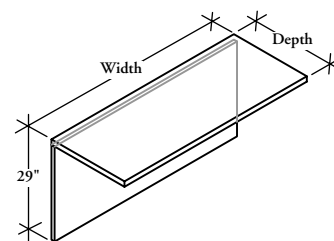
**NOTES**

Round Grommet is only available in Satin Nickel Coordinate (I) and Ebony (E).

Horizontal grain direction Veneer Group 4 only.

Flintwood available in Open Pore finish only.

**Z J B G**  
**Bridge Return for Standard Desk**  
**with Full Back Panel & Overlap**  
**Credenza End Connection**



**PRODUCT OPTIONS**

Grain Direction	Depth	Width (6" increments)	Finish	Grommet Style	Grommet Finish
<b>H</b> Horizontal	20, 24	60 - 72	Flintwood Natural Veneer <b>CWS</b> Custom Wood Stain	<b>N</b> No Grommet	<b>A</b> Satin Nickel
<b>V</b> Vertical				<b>C</b> Rectangular Grommet Centered	<b>E</b> Ebony
				<b>F</b> Round Grommet Centered	<b>7</b> Platinum
					<b>V</b> Very White
					<b>I</b> Satin Nickel Coordinate
					<b>X</b> Anthracite
					<b>2</b> Burnished Bronze
					<b>S</b> Sepia Bronze
					<b>M</b> Graphite
					<b>F</b> Titanium Grey
					<b>1</b> Gilded Ash

**SAMPLE ORDER CODE**

<b>ZJBG H</b>	<b>24</b>	<b>72</b>	<b>DV</b>	<b>C</b>	<b>A</b>
---------------	-----------	-----------	-----------	----------	----------

**DIMENSIONS**  
**INCHES / MM**

D	W
20 / 508	60 / 1524
20 / 508	66 / 1676
20 / 508	72 / 1829
24 / 610	60 / 1524
24 / 610	66 / 1676
24 / 610	72 / 1829

**PRICING**

FLINTWOOD		VENEER	
Vertical Grain	Horizontal Grain	Vertical Grain	Horizontal Grain
1561	1697	1751	1907
1650	1793	1853	2014
1739	1888	1954	2122
1629	1770	1831	1988
1728	1873	1940	2104
1825	1977	2050	2221

If Rectangular Grommet, Painted is specified, add 189

If Rectangular Grommet, Satin Nickel (A) is specified, add 234

If Round Grommet, Ebony (E) is specified, add 138

If Round Grommet, Satin Nickel Coordinate (I) is specified, add 200

To order a Custom Color for Dossier please use the code ZCCWS. A one time 1019 list charge per color applies.