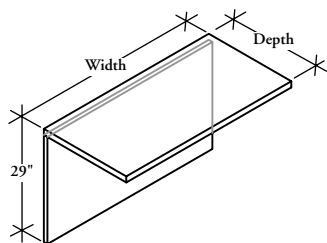


# bridge returns

## Z J B F

### Bridge Return for Standard Desk with Full Back Panel & Flush Credenza Connection



#### WHAT'S INCLUDED

1 bridge return with full back panel, worksurface grommet (if specified), connection hardware.

#### NOTES

Round Grommet is only available in Satin Nickel Coordinate (I) and Ebony (E).

Horizontal grain direction Veneer Group 4 only.

Flintwood available in Open Pore finish only.

#### PRODUCT OPTIONS

Grain Direction	Depth	Width (6" increments)	Finish	Grommet Style	Grommet Finish
<b>H</b> Horizontal	20, 24	42 - 54	Flintwood Natural Veneer <b>CWS</b> Custom Wood Stain	<b>N</b> No Grommet	<b>A</b> Satin Nickel
<b>V</b> Vertical				<b>C</b> Rectangular Grommet Centered	<b>E</b> Ebony
				<b>F</b> Round Grommet Centered	<b>7</b> Platinum
					<b>V</b> Very White
					<b>I</b> Satin Nickel Coordinate
					<b>X</b> Anthracite
					<b>2</b> Burnished Bronze
					<b>S</b> Sepia Bronze
					<b>M</b> Graphite
					<b>F</b> Titanium Grey
					<b>1</b> Gilded Ash

190

#### SAMPLE ORDER CODE

<b>ZJBF H</b>	<b>24</b>	<b>48</b>	<b>DV</b>	<b>C</b>	<b>A</b>
---------------	-----------	-----------	-----------	----------	----------

#### DIMENSIONS

INCHES / MM

D	W
20 / 508	42 / 1067
20 / 508	48 / 1219
20 / 508	54 / 1372
24 / 610	42 / 1067
24 / 610	48 / 1219
24 / 610	54 / 1372

#### PRICING

##### FLINTWOOD

Vertical Grain	Horizontal Grain
1134	1241
1215	1325
1293	1411
1179	1287
1265	1378
1349	1468

##### VENEER

Vertical Grain	Horizontal Grain
1274	1395
1365	1490
1455	1585
1324	1446
1421	1549
1517	1650

If Rectangular Grommet, Painted is specified, add 165

If Rectangular Grommet, Satin Nickel (A) is specified, add 204

If Round Grommet, Ebony (E) is specified, add 120

If Round Grommet, Satin Nickel Coordinate (I) is specified, add 176

To order a Custom Color for Dossier please use the code ZCCWS. A one time 897 list charge per color applies.