

## Z J A J J Panel

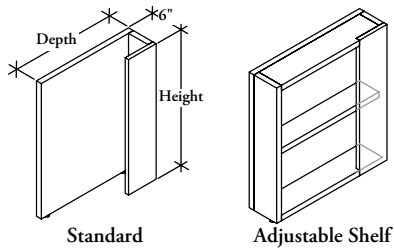
### WHAT'S INCLUDED

1 J panel, adjustable shelf (if specified).

### NOTES

Horizontal grain direction Veneer Group 4 only.

Flintwood available in Open Pore finish only.



### PRODUCT OPTIONS

Style	Grain Direction	Height	Depth	Width	Orientation	Finish
<b>S</b> Standard	<b>H</b> Horizontal	26 26"	20, 24	6	<b>L</b> Left	Flintwood
<b>A</b> Adjustable Shelf	<b>V</b> Vertical	27 27-1/2"			<b>R</b> Right	Natural Veneer <b>CWS</b> Custom Wood Stain

### SAMPLE ORDER CODE

<b>ZJAJ S</b>	<b>H</b>	<b>26</b>	<b>20</b>	<b>6</b>	<b>R</b>	<b>DV</b>
---------------	----------	-----------	-----------	----------	----------	-----------

### DIMENSIONS INCHES / MM

H	D	W
26 / 660	20 / 508	6 / 152
26 / 660	24 / 610	6 / 152
27.5 / 699	20 / 508	6 / 152
27.5 / 699	24 / 610	6 / 152

### PRICING

STANDARD (S)				ADJUSTABLE SHELF (A)			
VENEER		FLINTWOOD		VENEER		FLINTWOOD	
Vertical Grain	Horizontal Grain	Vertical Grain	Horizontal Grain	Vertical Grain	Horizontal Grain	Vertical Grain	Horizontal Grain
1006	1076	896	958	1384	1509	1232	1343
1053	1126	936	1005	1431	1560	1273	1390
1022	1096	909	977	1400	1528	1245	1361
1073	1148	956	1022	1450	1582	1291	1408

To order a Custom Color for Dossier please use the code ZCCWS. A one time 1182 list charge per color applies.