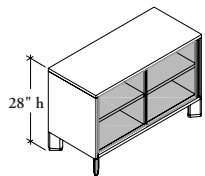


U H S E

High Double Sliding Door Credenza – Elevated



The Elevated High Double Sliding Door Credenza provides secured, lockable binder storage, and the capability to support stackers and panels.

WHAT'S INCLUDED

1 credenza, 2 District feet or 4 angled feet (as specified), 2 sliding doors with pulls, 2 height-adjustable shelves, lock and keys (if specified).

WHAT'S EXCLUDED

A Seat Cushion (UWLC) or Fitted Seated Cushion (UWLF) can be ordered separately. Can be found in the *Accessories* section.

NOTES

Double Sliding Door Credenzas will always have two sections secured with two sliding doors regardless of the width of the unit.

The 16" deep **cannot** be specified with a District Foot (D).

It is **not** recommended that Double Sliding Door Credenzas be used to support worksurfaces in a perpendicular application as handle pulls will be difficult to reach under the worksurface.

PRODUCT OPTIONS

Depth	Width	Pull Finish	Case, Back & Front Finish	Foot Finish	Foot Style	Electrical Cut Out (Angled Foot Only)	Key Style
16, 19	42, 48, 54, 60, 66, 72, 78, 84, 90, 96	Foundation Mica	Source Laminate Seamless Color Flintwood Natural Veneer FT Frost Standard Glass BP Backpainted Glass	Q Storm White 7 Platinum V Very White X Anthracite M Graphite 2 Burnished Bronze	D District A Angled Foot	NN None TL Base and Top Grommet Left TR Base and Top Grommet Right	K Keyed Alike R Keyed Randomly N No Lock

SAMPLE ORDER CODE

			Case	Back	Front				
UHSE 16	90	7	ZA	ZA	ZA	7	A	NN	R

**DIMENSIONS
INCHES / MM**

D	W
16 / 406	42 / 1067
16 / 406	48 / 1219
16 / 406	54 / 1372
16 / 406	60 / 1524
16 / 406	66 / 1676
16 / 406	72 / 1829
16 / 406	78 / 1981
16 / 406	84 / 2134
16 / 406	90 / 2286
16 / 406	96 / 2438
19 / 483	42 / 1067
19 / 483	48 / 1219
19 / 483	54 / 1372
19 / 483	60 / 1524
19 / 483	66 / 1676
19 / 483	72 / 1829
19 / 483	78 / 1981
19 / 483	84 / 2134
19 / 483	90 / 2286
19 / 483	96 / 2438

PRICING

SOURCE LAMINATE CASE			
Source Lam. Back & Front	Source Lam. Back, Flintwood Front	Source Lam. Back, Glass Front	
1673	2567	1868	
1795	2655	1962	
1907	2728	2066	
2020	2807	2156	
2145	2885	2266	
2262	2967	2404	
2379	3049	2542	
2492	3134	2681	
2608	3226	2807	
n/a	n/a	n/a	
1756	2695	1960	
1883	2786	2059	
2004	2864	2165	
2120	2945	2263	
2253	3030	2380	
2375	3114	2523	
2497	3202	2668	
2615	3294	2813	
2738	3385	2945	
n/a	n/a	n/a	

If Base & Top Grommet is specified, add 208

Pricing is continued on the following page.

**High Double Sliding Door Credenza –
Elevated (Continued)**

**DIMENSIONS
INCHES / MM**

PRICING

DIMENSIONS		SEAMLESS CASE						
D	W	Seamless Back & Front	Seamless Back, Flintwood Front	Seamless Back, Veneer Front	Seamless Back, Glass Front	Flintwood Back, Seamless Front	Flintwood Back & Front	Flintwood Back, Glass Front
16 / 406	42 / 1067	2686	2926	2941	3080	2926	3217	3368
16 / 406	48 / 1219	2777	3025	3041	3184	3025	3328	3485
16 / 406	54 / 1372	2856	3111	3128	3275	3111	3422	3582
16 / 406	60 / 1524	2937	3199	3218	3370	3199	3520	3685
16 / 406	66 / 1676	3020	3292	3307	3466	3292	3619	3792
16 / 406	72 / 1829	3107	3383	3404	3563	3383	3723	3900
16 / 406	78 / 1981	3192	3479	3498	3664	3479	3828	4009
16 / 406	84 / 2134	3282	3579	3599	3771	3579	3937	4126
16 / 406	90 / 2286	3376	3682	3702	3877	3682	4051	4244
16 / 406	96 / 2438	3473	3787	3808	3988	3787	4166	4370
19 / 483	42 / 1067	2819	3072	3087	3233	3072	3376	3535
19 / 483	48 / 1219	2917	3180	3192	3342	3180	3492	3657
19 / 483	54 / 1372	3001	3266	3282	3437	3266	3592	3764
19 / 483	60 / 1524	3083	3359	3377	3537	3359	3695	3871
19 / 483	66 / 1676	3169	3456	3474	3637	3456	3801	3981
19 / 483	72 / 1829	3261	3553	3573	3742	3553	3908	4096
19 / 483	78 / 1981	3352	3653	3673	3850	3653	4020	4210
19 / 483	84 / 2134	3449	3759	3777	3957	3759	4133	4332
19 / 483	90 / 2286	3544	3866	3885	4071	3866	4254	4455
19 / 483	96 / 2438	3648	3977	3997	4189	3977	4376	4585

DIMENSIONS		SEAMLESS CASE		
D	W	Veneer Back, Seamless Front	Veneer Back & Front	Veneer Back, Glass Front
16 / 406	42 / 1067	2941	3237	3392
16 / 406	48 / 1219	3041	3352	3511
16 / 406	54 / 1372	3128	3449	3611
16 / 406	60 / 1524	3218	3546	3714
16 / 406	66 / 1676	3307	3649	3822
16 / 406	72 / 1829	3404	3752	3930
16 / 406	78 / 1981	3498	3858	4046
16 / 406	84 / 2134	3599	3969	4158
16 / 406	90 / 2286	3702	4083	4278
16 / 406	96 / 2438	3808	4200	4403
19 / 483	42 / 1067	3087	3404	3563
19 / 483	48 / 1219	3192	3521	3686
19 / 483	54 / 1372	3282	3620	3793
19 / 483	60 / 1524	3377	3724	3900
19 / 483	66 / 1676	3474	3830	4011
19 / 483	72 / 1829	3573	3939	4127
19 / 483	78 / 1981	3673	4052	4245
19 / 483	84 / 2134	3777	4166	4369
19 / 483	90 / 2286	3885	4287	4494
19 / 483	96 / 2438	3997	4410	4621

If Base & Top Grommet is specified, add 208

Pricing is continued on the following page.

U H S E

High Double Sliding Door Credenza –
Elevated (Continued)

DIMENSIONS
INCHES / MM

PRICING

DIMENSIONS		FLINTWOOD CASE					
D	W	Seamless Back & Front	Seamless Back, Glass Front	Seamless Back, Flintwood Front	Flintwood Back, Seamless Front	Flintwood Back, Glass Front	Flintwood Back & Front
16 / 406	42 / 1067	3103	3431	3276	3276	3553	3391
16 / 406	48 / 1219	3229	3573	3410	3410	3701	3531
16 / 406	54 / 1372	3351	3708	3539	3539	3842	3665
16 / 406	60 / 1524	3479	3852	3675	3675	3988	3808
16 / 406	66 / 1676	3611	4000	3816	3816	4143	3952
16 / 406	72 / 1829	3751	4153	3961	3961	4301	4104
16 / 406	78 / 1981	3895	4310	4114	4114	4464	4262
16 / 406	84 / 2134	4046	4479	4272	4272	4640	4426
16 / 406	90 / 2286	4199	4649	4436	4436	4818	4598
16 / 406	96 / 2438	4356	4830	4607	4607	5003	4774
19 / 483	42 / 1067	3258	3604	3438	3438	3731	3562
19 / 483	48 / 1219	3388	3751	3579	3579	3884	3707
19 / 483	54 / 1372	3520	3896	3717	3717	4032	3851
19 / 483	60 / 1524	3653	4046	3859	3859	4189	3997
19 / 483	66 / 1676	3793	4200	4007	4007	4348	4152
19 / 483	72 / 1829	3937	4357	4159	4159	4516	4307
19 / 483	78 / 1981	4088	4528	4321	4321	4688	4474
19 / 483	84 / 2134	4245	4702	4486	4486	4873	4648
19 / 483	90 / 2286	4409	4881	4656	4656	5058	4826
19 / 483	96 / 2438	4577	5070	4837	4837	5253	5011
DIMENSIONS		VENEER CASE					
D	W	Seamless Back & Front	Seamless Back, Glass Front	Seamless Back, Veneer Front	Veneer Back, Seamless Front	Veneer Back, Glass Front	Veneer Back & Front
16 / 406	42 / 1067	3211	3557	3393	3393	3679	3511
16 / 406	48 / 1219	3210	3555	3392	3392	3676	3510
16 / 406	54 / 1372	3331	3689	3524	3524	3817	3646
16 / 406	60 / 1524	3457	3830	3655	3655	3963	3781
16 / 406	66 / 1676	3588	3977	3796	3796	4116	3927
16 / 406	72 / 1829	3726	4130	3944	3944	4272	4079
16 / 406	78 / 1981	3870	4290	4092	4092	4437	4233
16 / 406	84 / 2134	4017	4453	4250	4250	4608	4397
16 / 406	90 / 2286	4172	4623	4412	4412	4786	4568
16 / 406	96 / 2438	4331	4804	4582	4582	4971	4742
19 / 483	42 / 1067	3373	3734	3564	3564	3861	3686
19 / 483	48 / 1219	3370	3733	3563	3563	3860	3685
19 / 483	54 / 1372	3498	3876	3701	3701	4008	3827
19 / 483	60 / 1524	3629	4023	3837	3837	4161	3973
19 / 483	66 / 1676	3771	4175	3984	3984	4322	4124
19 / 483	72 / 1829	3911	4338	4138	4138	4486	4280
19 / 483	78 / 1981	4060	4501	4299	4299	4658	4447
19 / 483	84 / 2134	4220	4677	4461	4461	4840	4618
19 / 483	90 / 2286	4379	4855	4633	4633	5027	4796
19 / 483	96 / 2438	4546	5046	4812	4812	5221	4980

If Base & Top Grommet is specified, add 208