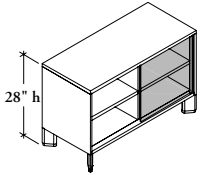


**U H G E**

**High Single Sliding Door Credenza – Elevated**



The Elevated High Single Sliding Door Credenza provides both open and secured, lockable binder storage, and the capability to support worksurfaces, stackers and panels.

**WHAT'S INCLUDED**

1 credenza, 2 District feet or 4 angled feet (as specified), 1 sliding door with pull, 2 height-adjustable shelves, grommet (if specified), lock and keys (if specified).

**WHAT'S EXCLUDED**

A Seat Cushion (UWLC) or Fitted Seated Cushion (UWLF) can be ordered separately. Can be found in the *Accessories* section.

**NOTES**

Single Sliding Door Credenzas will always have two sections (one open and one secured) regardless of the width of the unit.

Handedness is determined by the location of the open section when the cabinet is in the locked position.

The 16" deep **cannot** be specified with a District Foot (D).

Grommets are finished in Platinum.

Grommet option is available for casual power and data routing only. The Cubby Power Monument (EWQPM) **cannot** be used in the High Single Sliding Door Credenza.

**PRODUCT OPTIONS**

Depth	Width	Open Compartment Location	Pull Finish	Case, Back & Front Finish	Foot Finish	Foot Style	Electrical Cut Out (Angled Foot Only)	Key Style
16, 19	42, 48, 54, 60, 66, 72, 78, 84, 90, 96	<b>L</b> Left (shown) <b>R</b> Right	Foundation Mica	Source Laminate Seamless Color Flintwood Natural Veneer <b>FT</b> Frost Standard Glass <b>BP</b> Backpainted Glass	<b>Q</b> Storm White <b>7</b> Platinum <b>V</b> Very White <b>X</b> Anthracite <b>M</b> Graphite <b>2</b> Burnished Bronze	<b>D</b> District <b>A</b> Angled Foot	<b>T</b> Base & Top Grommet <b>N</b> None	<b>K</b> Keyed Alike <b>R</b> Keyed Randomly <b>N</b> No Lock

**SAMPLE ORDER CODE**

Case Back Front

<b>UHGE 16</b>	<b>90</b>	<b>L</b>	<b>7</b>	<b>ZA</b>	<b>ZA</b>	<b>ZA</b>	<b>7</b>	<b>A</b>	<b>T</b>	<b>R</b>
----------------	-----------	----------	----------	-----------	-----------	-----------	----------	----------	----------	----------

636

**DIMENSIONS INCHES / MM**

D	W
16 / 406	42 / 1067
16 / 406	48 / 1219
16 / 406	54 / 1372
16 / 406	60 / 1524
16 / 406	66 / 1676
16 / 406	72 / 1829
16 / 406	78 / 1981
16 / 406	84 / 2134
16 / 406	90 / 2286
16 / 406	96 / 2438
19 / 483	42 / 1067
19 / 483	48 / 1219
19 / 483	54 / 1372
19 / 483	60 / 1524
19 / 483	66 / 1676
19 / 483	72 / 1829
19 / 483	78 / 1981
19 / 483	84 / 2134
19 / 483	90 / 2286
19 / 483	96 / 2438

**PRICING**

**SOURCE LAMINATE CASE**

Source Lam. Back & Front	Source Lam. Back, Flintwood Front	Source Lam. Back, Glass Front
1355	2079	1512
1455	2151	1591
1547	2210	1673
1636	2273	1748
1737	2337	1837
1834	2404	1948
1928	2472	2061
2020	2540	2172
2112	2612	2273
n/a	n/a	n/a
1422	2183	1588
1527	2258	1669
1624	2320	1755
1719	2387	1835
1825	2454	1929
1926	2523	2045
2023	2595	2163
2119	2668	2281
2220	2745	2387
n/a	n/a	n/a

If Base & Top Grommet is specified, add 178

Pricing is continued on the following page.

High Single Sliding Door Credenza –  
Elevated (Continued)

DIMENSIONS  
INCHES / MM

PRICING

D	W
16 / 406	42 / 1067
16 / 406	48 / 1219
16 / 406	54 / 1372
16 / 406	60 / 1524
16 / 406	66 / 1676
16 / 406	72 / 1829
16 / 406	78 / 1981
16 / 406	84 / 2134
16 / 406	90 / 2286
16 / 406	96 / 2438
19 / 483	42 / 1067
19 / 483	48 / 1219
19 / 483	54 / 1372
19 / 483	60 / 1524
19 / 483	66 / 1676
19 / 483	72 / 1829
19 / 483	78 / 1981
19 / 483	84 / 2134
19 / 483	90 / 2286
19 / 483	96 / 2438

SEAMLESS CASE

Seamless Back & Front	Seamless Back, Flintwood Front	Seamless Back, Veneer Front	Seamless Back, Glass Front	Flintwood Back, Seamless Front	Flintwood Back & Front	Flintwood Back, Glass Front
2177	2370	2383	2496	2370	2605	2727
2251	2451	2465	2580	2451	2695	2822
2314	2520	2535	2654	2520	2774	2905
2380	2593	2607	2729	2593	2851	2987
2448	2667	2682	2810	2667	2932	3073
2516	2744	2756	2887	2744	3016	3160
2588	2819	2834	2970	2819	3102	3250
2660	2900	2916	3054	2900	3191	3344
2736	2983	2998	3143	2983	3283	3439
2814	3069	3084	3233	3069	3377	3540
2285	2489	2503	2622	2489	2734	2864
2364	2575	2588	2711	2575	2829	2964
2430	2649	2660	2787	2649	2911	3050
2498	2722	2738	2866	2722	2992	3135
2569	2800	2815	2948	2800	3080	3225
2642	2879	2894	3032	2879	3167	3318
2718	2960	2977	3118	2960	3256	3413
2792	3047	3060	3207	3047	3350	3510
2874	3132	3148	3300	3132	3447	3610
2955	3222	3239	3395	3222	3547	3716

SEAMLESS CASE

Veneer Back, Seamless Front	Veneer Back & Front	Veneer Back, Glass Front
2383	2626	2750
2465	2718	2846
2535	2792	2926
2607	2875	3011
2682	2956	3097
2756	3040	3186
2834	3126	3277
2916	3217	3370
2998	3307	3466
3084	3402	3568
2503	2756	2887
2588	2852	2988
2660	2933	3074
2738	3017	3160
2815	3103	3252
2894	3192	3345
2977	3284	3440
3060	3377	3539
3148	3474	3641
3239	3574	3744

If Base & Top Grommet is specified, add 178

Pricing is continued on the following page.

U H G E

High Single Sliding Door Credenza –  
Elevated (Continued)

DIMENSIONS  
INCHES / MM

PRICING

DIMENSIONS		FLINTWOOD CASE					
D	W	Seamless Back & Front	Seamless Back, Glass Front	Seamless Back, Flintwood Front	Flintwood Back, Seamless Front	Flintwood Back, Glass Front	Flintwood Back & Front
16 / 406	42 / 1067	2514	2782	2655	2655	2879	2749
16 / 406	48 / 1219	2618	2894	2762	2762	2997	2860
16 / 406	54 / 1372	2717	3007	2871	2871	3113	2971
16 / 406	60 / 1524	2819	3122	2979	2979	3233	3084
16 / 406	66 / 1676	2926	3240	3093	3093	3357	3203
16 / 406	72 / 1829	3039	3365	3212	3212	3486	3326
16 / 406	78 / 1981	3155	3494	3334	3334	3619	3454
16 / 406	84 / 2134	3277	3630	3463	3463	3760	3586
16 / 406	90 / 2286	3401	3767	3596	3596	3904	3726
16 / 406	96 / 2438	3532	3913	3734	3734	4053	3868
19 / 483	42 / 1067	2639	2920	2787	2787	3023	2886
19 / 483	48 / 1219	2748	3039	2900	2900	3148	3006
19 / 483	54 / 1372	2851	3156	3013	3013	3269	3119
19 / 483	60 / 1524	2960	3277	3127	3127	3395	3239
19 / 483	66 / 1676	3074	3402	3248	3248	3525	3364
19 / 483	72 / 1829	3191	3532	3371	3371	3661	3492
19 / 483	78 / 1981	3313	3669	3501	3501	3801	3626
19 / 483	84 / 2134	3440	3809	3636	3636	3947	3766
19 / 483	90 / 2286	3573	3957	3774	3774	4099	3910
19 / 483	96 / 2438	3708	4108	3921	3921	4256	4061
DIMENSIONS		VENEER CASE					
D	W	Seamless Back & Front	Seamless Back, Glass Front	Seamless Back, Veneer Front	Veneer Back, Seamless Front	Veneer Back, Glass Front	Veneer Back & Front
16 / 406	42 / 1067	2602	2881	2751	2751	2981	2846
16 / 406	48 / 1219	2601	2880	2750	2750	2980	2845
16 / 406	54 / 1372	2698	2990	2855	2855	3094	2952
16 / 406	60 / 1524	2802	3103	2963	2963	3213	3065
16 / 406	66 / 1676	2909	3222	3077	3077	3335	3183
16 / 406	72 / 1829	3019	3348	3193	3193	3463	3305
16 / 406	78 / 1981	3134	3476	3316	3316	3598	3431
16 / 406	84 / 2134	3255	3609	3442	3442	3735	3562
16 / 406	90 / 2286	3380	3746	3576	3576	3878	3701
16 / 406	96 / 2438	3510	3894	3712	3712	4029	3843
19 / 483	42 / 1067	2731	3026	2888	2888	3129	2988
19 / 483	48 / 1219	2729	3024	2887	2887	3128	2987
19 / 483	54 / 1372	2834	3142	2997	2997	3249	3101
19 / 483	60 / 1524	2943	3260	3111	3111	3372	3219
19 / 483	66 / 1676	3054	3384	3228	3228	3502	3341
19 / 483	72 / 1829	3171	3515	3354	3354	3636	3469
19 / 483	78 / 1981	3291	3648	3483	3483	3775	3603
19 / 483	84 / 2134	3419	3791	3616	3616	3923	3740
19 / 483	90 / 2286	3550	3935	3756	3756	4074	3887
19 / 483	96 / 2438	3685	4088	3899	3899	4231	4034

If Base & Top Grommet is specified, add 178