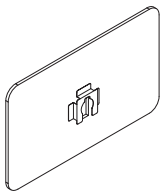


GZMH **Xpress**

Swerv Contrast Screen



What's Included

1 Smooth Felt Screen, mounting hardware.

Notes

Can be mounted on Swerv Monitor Arm (YMSS), Swerv XL Dynamic Monitor Arm (YMSX) and Swerv XL Dynamic Monitor Arm with Crossbar (YMSB) monitor arm solutions.

Available in Three finishes.

Sizing for use with Swerv XL Dynamic Monitor Arm (YMSX):

- Small screen suitable for monitor sizes 20" - 22" (26"w x 16"h)
- Medium screen suitable for monitor sizes 23" - 25" (28"w x 17"h)
- Large screen suitable for monitor sizes 26" - 28" (31"w x 18 1/2"h)

Sizing for use with Swerv XL Dynamic Monitor Arm with Crossbar (YMSB):

- Small screen suitable for monitor sizes 20" - 22" (46"w x 16"h)
- Medium screen suitable for monitor sizes 23" - 25" (50"w x 17"h)
- Large screen suitable for monitor sizes 26" - 28" (56"w x 18 1/2"h)

Xpress Available through *Teknion's Xpress Program*.

PRODUCT OPTIONS

Arm Type		Size	Smooth Felt Finish
1	Swerv, Swerv XL	S Small M Medium G Large	Smooth Felt Colors
2	Swerv XL with Crossbar		

SAMPLE ORDER CODE

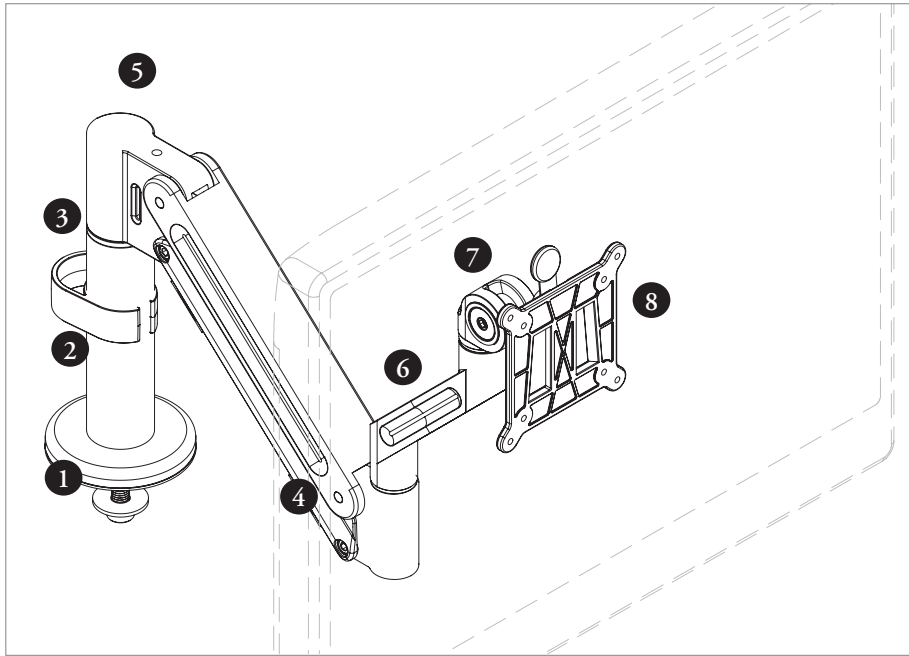
GZMH 1	M	R4
--------	---	----

SIZE	PRICING	
	Swerv XL	Swerv XL with Crossbar
Small	231	370
Medium	270	518
Large	349	639

MAST overview

MAST displays an aesthetic and a function defined by exactitude. Designed to exceed ergonomic accommodation standards, MAST offers a wide range of adaptability to promote healthy work postures and user comfort.

MAST dynamic arm / dynamic arm light



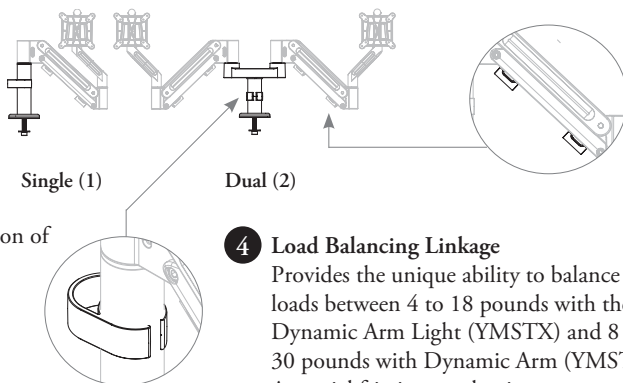
- 1 Mounting Option**
Bolt Thru Mount (1) shown. See page 137 for additional mounting options.

- 2 Post**
An upright post that connects mounting option with the hub. The post is available in Single (1) and Dual (2) configurations. Configuration is determined by selection of Single or Dual arm.

- 3 Wire Management Wire Clip**
• The friction fit wire clip can be placed anywhere on the post. Wires are passed through the center of the clip and positioned in the outer holding area ensuring wires do not accidentally become unmanaged

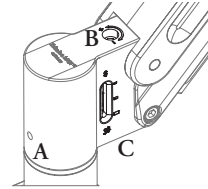
Integrated Wire Management

- The load balancing linkage has two external wire clips and the angled linkage has one integrated wire clip for superior wire management from monitor to worksurface



- 4 Load Balancing Linkage**
Provides the unique ability to balance loads between 4 to 18 pounds with the Dynamic Arm Light (YMSTX) and 8 to 30 pounds with Dynamic Arm (YMSTD). A special friction mechanism ensures that only a small amount of force is required to adjust the arm up and down through the entire range of motion. A consistent user experience is guaranteed as the monitor load is balanced equally at any position.

- 5 Hub**
A. Positioning Feature
Fixes the hub in a set position relative to the post.
B. Adjustment Screw



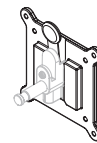
Adjusts the amount of counterbalance force in the load balancing linkage. Using an allen key, rotating counter clockwise (+) adds force for heavier monitors, rotating clockwise (-) subtracts force for lighter monitors.

C. Indicator Window
Visible on both sides of the hub, the indicator window provides directional feedback to the user when balancing the arm referencing small medium and large images of a monitor. The indicator establishes a benchmark position significantly reducing installation times.

- 6 Angled Linkage**
Only available on the Dynamic Arm / Dynamic Arm Light, the geometry of the Angled Linkage as well as the height of the post assures that the user is able to move the monitor up and down through the full 12" range of motion.

- 7 Swivel/Tilt Head**
Provides swivel and tilt adjustability for the monitor

- 8 Monitor Mount**
Quick Release VESA Plate (YMSTV)
• VESA 75/100 hole pattern
• Standard with all MAST arms (also available as separate item)
• The smart tab (a signature Library Green color) allows intuitive release of the monitor from the arm



Quick Release Vesa Plate

planning with MAST (continued)

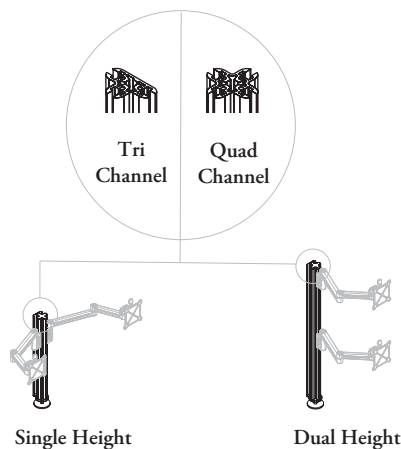
1 Mounting Option

Round Grommet (4) shown. See page 137 for additional mounting options.

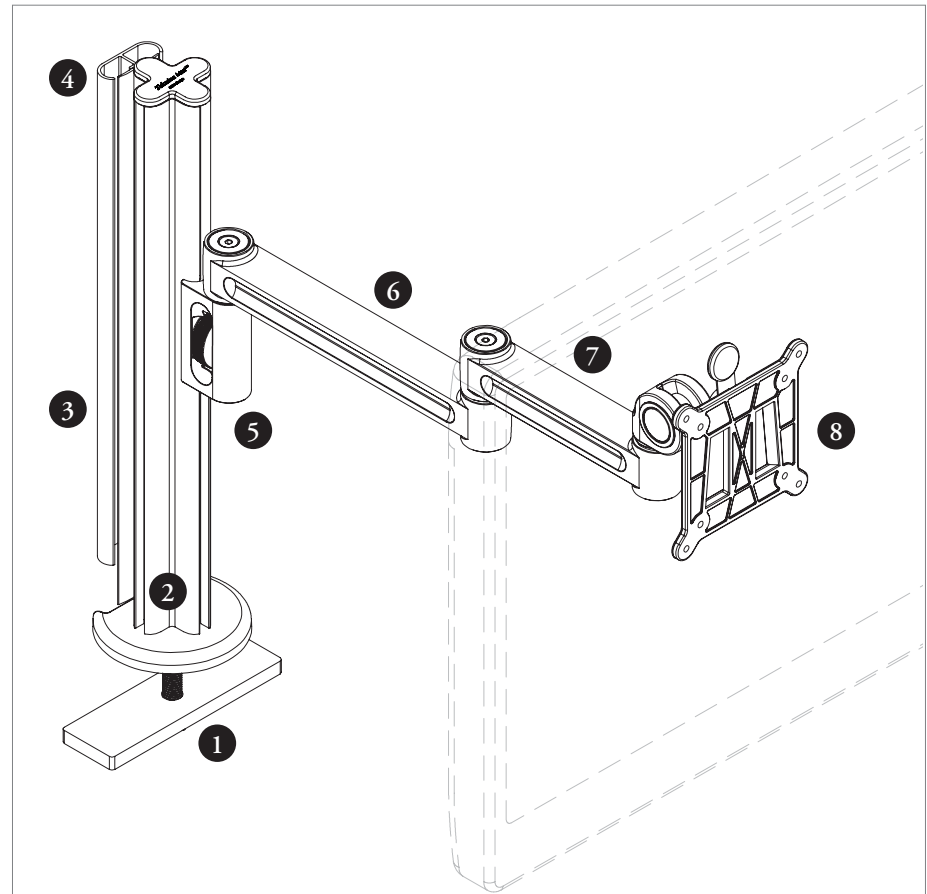
2 Stanchion

An upright post with channels; the structural backbone of MAST.

- Quad channel stanchions are standard for all configurations except Marketplace Back-2-Back (7) which uses two tri-channel stanchions
- Stanchion height (available in single and dual height) is determined by arm configuration selection
- The quad-channel has four and the tri-channel stanchion has three separate channels for attaching arms and wire management



MAST manual arm



3 Wire Management

Vertical Wire Column

- When Wire Management (Y) is selected a vertical wire column is included for all mounting configurations except the Marketplace Back-2-Back (7) option
- The height of the vertical wire column will match the height of the stanchion
- Back-2-Back clip
- When Wire Management (Y) is selected three Back-2-Back clips are included for each single height tri-channel stanchion in the Marketplace Back-2-Back (7) mounting option. If dual height mounting configuration is selected the number of Back-2-Back clips provided doubles



4 Top Cap

Removable, allows access to channels in stanchion for arm attachment

5 Primary Connector

Highlighted with ergonomic “knurled knob”, creates a strong connection between the stanchion channel and a MAST arm

6 Arm Linkages

Short arm has one integrated wire manager while the long arm has two.

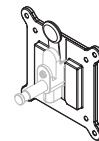
7 Swivel/Tilt Head

Provides swivel and tilt adjustability for the monitor

8 Monitor Mount

Quick Release VESA Plate (YMSTV)

- VESA 75/100 hole pattern
- Standard with all MAST arms (also available as separate item)
- The smart tab (a signature Library Green color) allows intuitive release of the monitor from the arm



Quick Release Vesa Plate