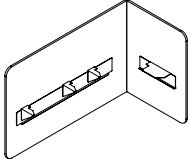


# GZBH

## Smooth Felt Square Corner Desk Edge Screen



The Smooth Felt Square Corner Desk Edge Screen attaches to the worksurface on both on the back and lateral edge. It provides space division and local desktop privacy in varying levels. The lightweight and thin screen expresses a softer curvilinear aesthetic.

### What's Included

1 Smooth Felt desk edge screen, attachment brackets, wire manger (if specified).

### Notes

The screen depth is 20" with a 1/2" wire gap around the screen.

Screen is designed to accompany a Rectangular Worksurface, available in Complements, District, Interpret, Leverage and upStage.

### PRODUCT OPTIONS

Modesty Base Height	Datum Height	Depth	Width	Orientation	Wire Manager	Smooth Felt Finish	Hardware Finish
<b>S</b> Partial Modesty Height (23")	42, 51	20	23, 29, 35, 41, 47, 51, 53, 57, 59	<b>L</b> Left	<b>Y</b> Yes	Smooth Felt Colors	Foundation Mica Accent
<b>T</b> Semi-Modesty Height (19")				<b>R</b> Right	<b>N</b> No		
<b>M</b> Modesty Height (15")							

### SAMPLE ORDER CODE

<b>GZBH S</b>	<b>42</b>	<b>20</b>	<b>53</b>	<b>R</b>	<b>Y</b>	<b>R4</b>	<b>74</b>
---------------	-----------	-----------	-----------	----------	----------	-----------	-----------

### DIMENSIONS INCHES / MM

H	D	W
42 / 1067	20 / 508	23 / 584
42 / 1067	20 / 508	29 / 735
42 / 1067	20 / 508	35 / 889
42 / 1067	20 / 508	41 / 1041
42 / 1067	20 / 508	47 / 1194
42 / 1067	20 / 508	51 / 1295
42 / 1067	20 / 508	53 / 1346
42 / 1067	20 / 508	57 / 1448
42 / 1067	20 / 508	59 / 1499
51 / 1295	20 / 508	23 / 584
51 / 1295	20 / 508	29 / 735
51 / 1295	20 / 508	35 / 889
51 / 1295	20 / 508	41 / 1041
51 / 1295	20 / 508	47 / 1194
51 / 1295	20 / 508	51 / 1295
51 / 1295	20 / 508	53 / 1346
51 / 1295	20 / 508	57 / 1448
51 / 1295	20 / 508	59 / 1499

### PRICING

Partial Modesty (23")	Semi-Modesty (19")	Modesty (15")
651	698	698
672	717	717
690	737	737
1072	1118	1118
1092	1138	1138
1112	1158	1158
1112	1158	1158
1131	1177	1177
1131	1177	1177
795	811	811
1028	1047	1047
1457	1491	1491
1825	1847	1847
1850	1861	1861
1864	1873	1873
1864	1873	1873
1887	1887	1887
1887	1887	1887

If Accent/Mica Hardware Finish is specified, for 36" - 42", add 14

If Accent/Mica Hardware Finish is specified, for 48" - 72", add 28

If Wire Manager is specified, add 7