

cosi laptop table overview

The Cosi Laptop Table offers proof that work tools designed for utility can be elegant as well. Intuitive and easy to adjust, Cosi accommodates users with its height and tilt features. The casual work surface has a clever front lip to secure the laptop while an integrated device stand keeps the phone at hand.

cosi laptop table & cosi signature laptop table

The Cosi Laptop Table is available in monochrome finishes and ships knocked down with minimal assembly required.

The Cosi Signature series is available with a wider range of surface and base finish combinations. This Signature series can be shipped fully assembled or knocked down.



Cosi Signature Laptop Table (YYTLL)

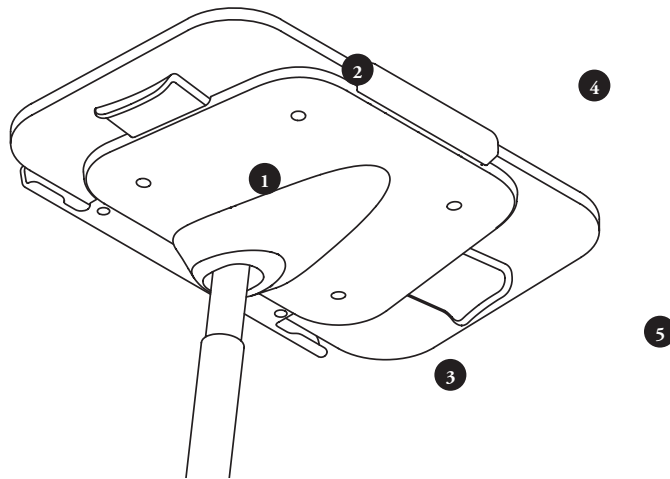
- Width: 22"
- Depth: 13"
- Height: 25" - 33"
- Worksurface available in:
 - Coastal Elm
 - Essential Oak
 - Craft Walnut
 - Provincial Oak
 - Smoked Oak
 - Atrium White
 - Black Matte
 - Clay
- Base finish available in:
 - Atrium White
 - Soft Black
 - Clay
- Device stand, front edge, underpan and controls suite to coordinate with Base Finish
- Exposed ply edge



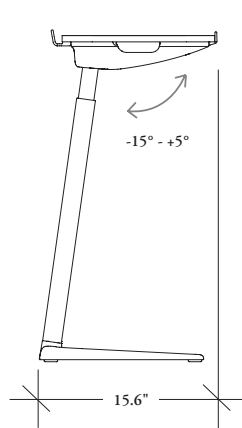
Cosi Laptop Table (YYTLO)

- Width: 22"
- Depth: 13"
- Height: 25" - 33"
- Worksurface available in:
 - Atrium White Coordinate
 - Black Matte Coordinate
 - Clay Coordinate
- Base Finish, device stand, front edge, underpan and controls suite to coordinate with worksurface finish
- Exposed ply edge

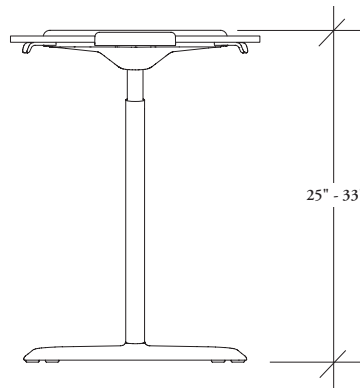
cosi laptop table overview (continued)



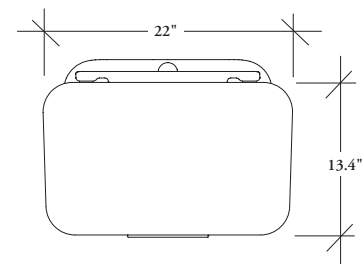
- 1 Underpan conceals mechanism
- 2 Tilt Control:
 - Located on user's left
 - Pull outward and adjust worksurface to desired angle
 - Tilts -15° to $+5^{\circ}$ to accommodate a range of positions
- 3 Device stand with wire slot
- 4 Front edge lip secures laptop
- 5 Height Control:
 - Located on user's right
 - Pull outward and adjust to desired height
 - Overall height ranges from 25" to 33"



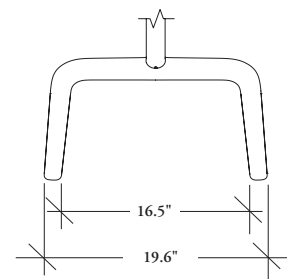
Side View



Front View



Top View



Leg

- Base provides clearance around seating base/feet
- Easily slides and repositions on the floor