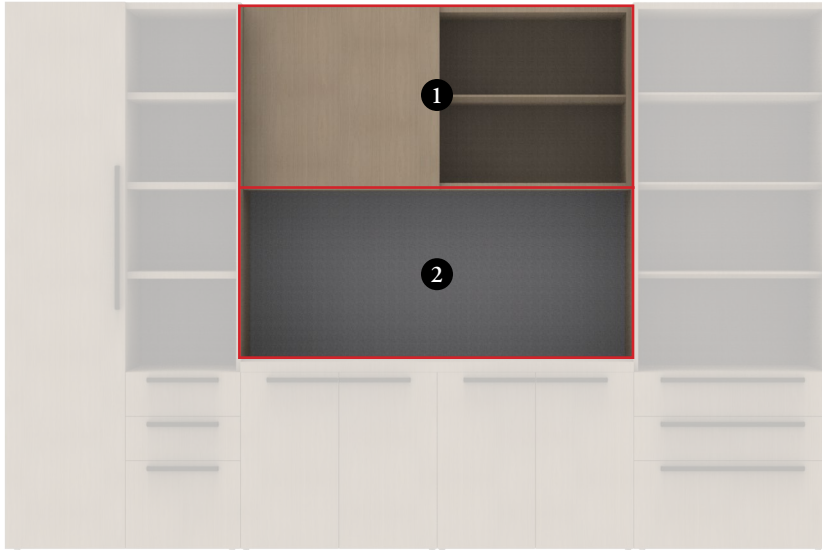


**OVERHEADS, WALL SHELVES, WALL PANELS & TILES OVERVIEW**

Wall-mounted elements are affixed directly to a wall and offer additional storage, areas for display or writable surfaces.



Components:

- ① Overhead
- ② Wall Panel



Overheads, wall shelves and wall panels are affixed to the wall with wood cleats.

Wall Tiles are affixed to the wall with Metal Z-Cleats.

Overheads, wall shelves and wall panels have an overall 2" panel thickness. They also include a filler strip to conceal the wall cleats. The strip will match the panel or overall suite finish.

Wall tiles are 1" thick and do not require a filler strip.

When light options are specified, the wood cleats are split to create a channel for cable routing behind the panel.

OVERHEADS, WALL SHELVES, WALL PANELS & TILES OVERVIEW



**Overhead, Open  
COOP**

Height: 1 High (1H), 2 High (2H)  
Depth: 15"  
Widths: 30" - 108" in 6" increments



**Overhead, Hinged Doors  
COHD**

Height: 1 High (1H), 2 High (2H)  
Depth: 15"  
Widths: 30" - 108" in 6" increments



**Overhead Hinged  
Doors with Cubby  
COHC**

Height: 1 High (1H), 2 High (2H)  
Depth: 15"  
Widths: 54" - 108" in 6" increments



**Overhead Sliding Door  
COSD**

Height: 1 High (1H), 2 High (2H)  
Depth: 15"  
Widths: 54" - 108" in 6" increments



**Open Wall Shelves  
CWOH**

Height: 3 High (3H), 4 High (4H)  
Depth: 15"  
Widths: 24" - 108" in 6" increments



**Open Wall Shelves,  
above Low Credenza  
CWOL**

Height: 3 High (3L), 4 High (4L)  
Depth: 15"  
Widths: 24" - 78" in 6" increments



**Combination Open  
Shelves & Lower Panel  
CWCH**

Height: 3 High (3H), 4 High (4H)  
Depth: 15"  
Widths: 24" - 108" in 6" increments



**Combination Open Shelves &  
Lower Panel, above Low Credenzas  
CWCL**

Height: 3 High (3L), 4 High (4L)  
Depth: 15"  
Widths: 24" - 78" in 6" increments



**Wall Panel  
CWPH**

Height: 1 High (1H), 2 High (2H)  
3 High (3H), 4 High (4H)  
Widths: 24" - 90" in 6" increments



**Wall Panel, above Low Credenza  
CWPL**

Height: 1 High (1L), 2 High (2L)  
3 High (3L), 4 High (4L)  
Widths: 24" - 90" in 6" increments



**Wall Tile  
CWTS**

Height: 1 High (1H), 2 High (2H)  
Widths: 24" - 72" in 6" increments

**OVERHEADS, WALL SHELVES, WALL PANELS & TILES PRODUCT FEATURES:**

- Depths: 15" (Overheads and Wall Shelves), 2" thick wall panels, 1" thick wall tiles
- Widths:
  - Overheads: 30" - 108":
    - 30" - 42" have one opening
    - 48" - 78" have two openings
    - 84" - 108" have three openings
  - Wall Shelves and Wall Panels: 24" - 108"
- Heights:
  - Overheads: 1H (14-3/4") and 2H (28-1/2")
  - Wall Shelves: 3H (41-1/4"), 4H (55") or 3L (48"), 4L (61-3/4")
- Mounting hardware:
  - Included with all units
  - Overheads, wall shelves and wall panels are mounted using wood wall cleats
  - Wall Tiles are mounted using Metal Z-Cleats
- Shelves:
  - Shelf Openings are 13" nominal; Bottom to first shelf L height is 18-1/2"
  - Shelf Edge Profile: Flat or Knife
  - Visible Shelves have option for varied finish from case. Shelves behind doors will match the case finish
  - Wall Shelves have option to omit bottom shelf or bottom two shelves (4H or 4L only)
- Light Options:
  - Lights are integrated into the underside of the open shelves or overhead case bottom
  - Wall Shelves have option to have lighting on all shelves or just the bottom shelf
- Optional lock available in Ebony or Satin Chrome, Keyed Alike per office suite



Flat Edge



Knife Edge

# COOP

Overhead, Open



## PRODUCT OPTIONS

Height	Depth	Width	Visible Shelf Edge Profile	Case Finish	Shelves Finish	Light
<b>1H</b> 1 High, 14-3/4" <b>2H</b> 2 High, 28-1/2"	15	030, 036, 042, 048, 054, 060, 066, 072, 078, 084, 090, 096, 102, 108	<b>F</b> Flat <b>K</b> Knife	Natural Veneer 2 Natural Veneer 3 Natural Veneer 4 Chroma Wood Rustic Oak	Natural Veneer 2 Natural Veneer 3 Natural Veneer 4 Chroma Wood Rustic Oak Painted Coordinate Finishes	<b>N</b> None <b>Y</b> Integrated Light Strip

## PRICING

Height	Width	Price
1H	30"	2006
	36"	2141
	42"	2324
	48"	2794
	54"	3008
	60"	3143
	66"	3326
	72"	3461
	78"	3676
	84"	4113
	90"	4296
	96"	4431
102"	4614	
108"	4749	

Height	Width	Flat	Knife
2H	30"	3038	3202
	36"	3263	3427
	42"	3520	3684
	48"	4318	4647
	54"	4655	4984
	60"	4847	5176
	66"	5104	5433
	72"	5345	5674
	78"	5715	6044
	84"	6416	6745
	90"	6673	7166
	96"	6906	7399
	102"	7211	7705
	108"	7395	7889

If Integrated Light Strip is specified:

30", 36" widths, add	1127
42", 48", 54" widths, add	1297
60", 66", 72", 78" widths, add	1541
84", 90", 96" widths, add	1711
102", 108" widths, add	1860

# COHD

## Overhead, Hinged Doors



### PRODUCT OPTIONS

Height	Depth	Width	Case Finish	Front Finish	Light	Lock
<b>1H</b> 1 High, 14-3/4"	15	030, 036, 042, 048, 054, 060, 066, 072, 078, 084, 090, 096, 102, 108	Natural Veneer 2	Natural Veneer 2	<b>N</b> None	<b>N</b> None
<b>2H</b> 2 High, 28-1/2"			Natural Veneer 3	Natural Veneer 3	<b>Y</b> Integrated Light Strip	<b>C</b> Keyed Alike - Satin Chrome
			Natural Veneer 4	Natural Veneer 4		<b>E</b> Keyed Alike - Ebony
			Chroma Wood	Chroma Wood		
			Rustic Oak	Rustic Oak		

### PRICING

Height	Width	Price
1H	30"	2694
	36"	2878
	42"	3111
	48"	3802
	54"	4066
	60"	4454
	66"	4687
	72"	4871
	78"	5136
	84"	5624
	90"	6198
	96"	6383
2H	102"	6616
	108"	6800
	30"	4023
	36"	4341
	42"	4691
	48"	5762
	54"	6192
	60"	6689
	66"	7039
	72"	7373
	78"	7835
	84"	8629
90"	9338	
96"	9664	
102"	10062	
108"	10339	

If Keyed Alike (Satin Chrome/Ebony) is specified, add 135

If Integrated Light Strip is specified:

30", 36" widths, add	1127
42", 48", 54" widths, add	1297
60", 66", 72", 78" widths, add	1541
84", 90", 96" widths, add	1711
102", 108" widths, add	1860

# COHC

Overhead, Hinged  
Doors with Cubby



## PRODUCT OPTIONS

Height	Depth	Width	Visible Shelf Edge Profile	Case Finish	Front Finish	Shelves Finish	Light	Lock
<b>1H</b> 1 High, 14-3/4" <b>2H</b> 2 High, 28-1/2"	15	054, 060, 066, 072, 078, 084, 090, 096, 102, 108	<b>F</b> Flat <b>K</b> Knife	Veneer	Veneer	Natural Veneer 2 Natural Veneer 3 Natural Veneer 4 Chroma Wood Rustic Oak Painted Coordinate Finishes	<b>N</b> None <b>Y</b> Integrated Light Strip	<b>N</b> None <b>C</b> Keyed Alike - Satin Chrome <b>E</b> Keyed Alike - Ebony

## PRICING

Height	Width	Price
1H	54"	3728
	60"	3928
	66"	4161
	72"	4295
	78"	4560
	84"	4998
	90"	5737
	96"	5921
	102"	6154
108"	6289	

Height	Width	Flat	Knife
2H	54"	5673	5878
	60"	5930	6135
	66"	6280	6485
	72"	6520	6726
	78"	6983	7188
	84"	7684	7890
	90"	8643	8849
	96"	8969	9175
	102"	9368	9574
108"	9552	9758	

If Keyed Alike (Satin Chrome/Ebony) is specified, add 135

If Integrated Light Strip is specified:

54" widths, add	1297
60", 66", 72", 78" widths, add	1541
84", 90", 96" widths, add	1711
102", 108" widths, add	1860

# COSD

## Overhead, Sliding Door



### PRODUCT OPTIONS

Height	Depth	Width	Visible Shelf Edge Profile	Case Finish	Front Finish	Shelves Finish	Light
<b>1H</b> 1 High, 14-3/4" <b>2H</b> 2 High, 28-1/2"	15	054, 060, 066, 072, 078, 084, 090, 096, 102, 108	<b>F</b> Flat <b>K</b> Knife	Natural Veneer 2 Natural Veneer 3 Natural Veneer 4 Chroma Wood Rustic Oak	Natural Veneer 2 Natural Veneer 3 Natural Veneer 4 Chroma Wood Rustic Oak Backpainted Glass	Natural Veneer 2 Natural Veneer 3 Natural Veneer 4 Chroma Wood Rustic Oak Painted Coordinate Finishes	<b>N</b> None <b>Y</b> Integrated Light Strip

### PRICING

Height	Width	Veneer	Backpainted Glass
1H	54"	4777	5570
	60"	4936	5790
	66"	5209	6122
	72"	5368	6341
	78"	5608	6640
	84"	7139	8578
	90"	7354	8873
	96"	7522	9120
	102"	7802	9481
108"	7970	9728	

Height	Width	Veneer		Backpainted Glass	
		Flat	Knife	Flat	Knife
2H	54"	6755	7084	8049	8378
	60"	6994	7323	8403	8732
	66"	7362	7691	8886	9215
	72"	7650	7979	9288	9617
	78"	8065	8394	9819	10148
	84"	10048	10542	12529	13023
	90"	10367	10861	13002	13495
	96"	10662	11155	13451	13944
	102"	11094	11587	14037	14530
	108"	11340	11833	14436	14930

If Keyed Alike (Satin Chrome/Ebony) is specified, add 135

If Integrated Light Strip is specified:

54" widths, add	1297
60", 66", 72", 78" widths, add	1541
84", 90", 96" widths, add	1711
102", 108" widths, add	1860

# CWPH

## Wall Panel



### PRODUCT OPTIONS

Height	Configuration	Width	Panel Finish
<b>1H</b> 1 High, 12-3/4" <b>2H</b> 2 High, 26-1/2" <b>3H</b> 3 High, 41-1/4" <b>4H</b> 4 High, 55"	<b>F</b> Full Height <b>R</b> Reduced Height by 1" for Overhead Above	024, 030, 036, 042, 048, 054, 060, 066, 072, 078, 084, 090, 096, 102, 108	Natural Veneer 2 Natural Veneer 3 Natural Veneer 4 Chroma Wood Rustic Oak Tackable Panel Fabric Backpainted Glass

### PRICING

Height	Width	Veneer	Panel Fabric					Backpainted Glass
			Gr. A	COM	Gr. 1	Gr. 2	Gr. 3	
1H	24"	860	973	1074	1004	1074	1102	1246
	30"	933	1100	1252	1148	1252	1294	1434
	36"	974	1284	1486	1347	1486	1542	1590
	42"	1031	1313	1515	1376	1515	1571	1761
	48"	1088	1409	1610	1472	1610	1667	1933
	54"	1145	1438	1639	1501	1639	1696	2105
	60"	1218	1483	1685	1546	1685	1741	2293
	66"	1358	1803	2106	1898	2106	2191	2547
	72"	1399	1927	2229	2021	2229	2314	2703
	78"	1472	1988	2291	2083	2291	2376	2907
	84"	1513	2001	2304	2096	2304	2389	3062
	90"	1570	2014	2317	2109	2317	2402	3218
2H	24"	1133	1137	1238	1168	1238	1266	2002
	30"	1226	1275	1427	1323	1427	1469	2349
	36"	1302	1470	1672	1533	1672	1728	2664
	42"	1395	1510	1712	1573	1712	1768	2995
	48"	1488	1617	1818	1680	1818	1875	3326
	54"	1581	1689	1891	1752	1891	1947	3689
	60"	1691	1900	2102	1963	2102	2158	4036
	66"	1948	2269	2572	2364	2572	2657	4531
	72"	2025	2293	2596	2388	2596	2681	4846
	78"	2134	2350	2652	2444	2652	2737	5193
	84"	2211	2374	2676	2468	2676	2761	5507
	90"	2304	2398	2700	2492	2700	2785	5822
96"	2578	n/a	n/a	n/a	n/a	n/a	6333	
102"	2654	n/a	n/a	n/a	n/a	n/a	6648	
108"	2731	n/a	n/a	n/a	n/a	n/a	6963	

Pricing is continued on the following page.



**CWPH**  
**Wall Panel**  
 (Continued)

Height	Width	Veneer	Panel Fabric					Backpainted Glass
			Gr. A	COM	Gr. 1	Gr. 2	Gr. 3	
3H	24"	1527	1398	1498	1429	1498	1527	2910
	30"	1665	1535	1686	1582	1686	1728	3417
	36"	1788	1744	1945	1807	1945	2002	3908
	42"	1926	1798	2000	1861	2000	2056	4415
	48"	2065	1919	2121	1982	2121	2177	4922
	54"	2302	2072	2274	2135	2274	2330	5528
	60"	2457	2298	2499	2361	2499	2556	6051
	66"	2595	2517	2819	2611	2819	2904	6558
	72"	2816	2654	2956	2748	2956	3041	7147
	78"	2980	2724	3027	2819	3027	3112	7670
	84"	3103	2763	3065	2857	3065	3150	n/a
	90"	3225	2834	3136	2928	3136	3221	n/a
	96"	3386	n/a	n/a	n/a	n/a	n/a	n/a
102"	3509	n/a	n/a	n/a	n/a	n/a	n/a	
108"	3631	n/a	n/a	n/a	n/a	n/a	n/a	
4H	24"	1868	2118	2320	2181	2320	2377	3761
	30"	2044	2200	2402	2263	2402	2459	4446
	36"	2203	2250	2452	2313	2452	2508	5099
	42"	2378	2316	2518	2379	2518	2574	5768
	48"	2553	n/a	n/a	n/a	n/a	n/a	6437
	54"	2744	n/a	n/a	n/a	n/a	n/a	n/a
	60"	2903	n/a	n/a	n/a	n/a	n/a	n/a
	66"	3079	n/a	n/a	n/a	n/a	n/a	n/a
	72"	3254	n/a	n/a	n/a	n/a	n/a	n/a
78"	3429	n/a	n/a	n/a	n/a	n/a	n/a	

# CWPL

Wall Panel, above  
Low Credenza



## PRODUCT OPTIONS

Height	Configuration	Width	Panel Finish
<b>1H</b> 1 High, 12-3/4" <b>2H</b> 2 High, 26-1/2" <b>3H</b> 3 High, 41-1/4" <b>4H</b> 4 High, 55"	<b>F</b> Full Height <b>R</b> Reduced Height by 1" for Overhead Above	024, 030, 036, 042, 048, 054, 060, 066, 072, 078, 084, 090, 096, 102, 108	Natural Veneer 2 Natural Veneer 3 Natural Veneer 4 Chroma Wood Rustic Oak Tackable Panel Fabric Backpainted Glass

## PRICING

Height	Width	Veneer	Panel Fabric					Backpainted Glass
			Gr. A	COM	Gr. 1	Gr. 2	Gr. 3	
1H	24"	971	998	1098	1029	1098	1127	1599
	30"	1046	1131	1282	1178	1282	1324	1867
	36"	1105	1320	1521	1383	1521	1578	2102
	42"	1180	1354	1556	1417	1556	1613	2353
	48"	1255	1455	1657	1518	1657	1714	2604
	54"	1330	1490	1692	1553	1692	1748	2888
	60"	1421	1541	1742	1604	1742	1799	3155
	66"	1579	1867	2169	1961	2169	2254	3489
	72"	1638	1995	2298	2090	2298	2383	3724
	78"	1729	2062	2365	2157	2365	2450	3992
	84"	1788	2081	2383	2175	2383	2468	4227
	90"	1863	2100	2402	2194	2402	2487	4462
2H	96"	1954	n/a	n/a	n/a	n/a	n/a	4729
	102"	2013	n/a	n/a	n/a	n/a	n/a	4964
	108"	2072	n/a	n/a	n/a	n/a	n/a	5200
	24"	1247	1163	1263	1194	1263	1292	2367
	30"	1358	1307	1458	1354	1458	1501	2781
	36"	1454	1507	1709	1570	1709	1765	3178
	42"	1566	1553	1755	1616	1755	1811	3591
	48"	1677	1665	1867	1728	1867	1923	4004
	54"	1805	1743	1945	1806	1945	2002	4434
	60"	1933	1960	2161	2023	2161	2218	4863
	66"	2209	2335	2637	2429	2637	2722	5441
	72"	2321	2365	2667	2459	2667	2752	5854
78"	2458	2427	2729	2521	2729	2814	6284	
84"	2554	2456	2759	2551	2759	2844	6681	
90"	2649	2486	2788	2581	2788	2873	7110	
96"	2948	n/a	n/a	n/a	n/a	n/a	7688	
102"	3043	n/a	n/a	n/a	n/a	n/a	8085	
108"	3139	n/a	n/a	n/a	n/a	n/a	8482	

Pricing is continued on the following page.

# CWPL

## Wall Panel, above Low Credenza (Continued)

Height	Width	Veneer	Panel Fabric					Backpainted Glass
			Gr. A	COM	Gr. 1	Gr. 2	Gr. 3	
3H	24"	1625	1578	1679	1609	1679	1707	3275
	30"	1782	1720	1872	1768	1872	1914	3881
	36"	1923	1847	2048	1910	2048	2105	4454
	42"	2080	1907	2109	1970	2109	2165	5044
	48"	2238	n/a	n/a	n/a	n/a	n/a	5633
	54"	2493	n/a	n/a	n/a	n/a	n/a	6207
	60"	2666	n/a	n/a	n/a	n/a	n/a	6780
4H	24"	1966	2144	2346	2207	2346	2402	4109
	30"	2160	2232	2433	2295	2433	2490	4877
	36"	2338	2287	2489	2350	2489	2545	5612
	42"	2532	2359	2560	2422	2560	2617	6364
	48"	2726	n/a	n/a	n/a	n/a	n/a	7115

**CWTS**  
Wall Tile



**PRODUCT OPTIONS**

Height	Width	Panel Finish
1H 1 High, 14-3/4" 2H 2 High, 28-1/2"	24, 30, 36, 42, 48, 54, 60, 66, 72	Tackable Panel Fabric Backpainted Glass

**PRICING**

Height	Width	Panel Fabric					Backpainted Glass
		Gr. A	COM	Gr. 1	Gr. 2	Gr. 3	
1H	24"	979	1080	1011	1080	1108	1329
	30"	1108	1259	1155	1259	1302	1538
	36"	1293	1495	1356	1495	1552	1714
	42"	1324	1525	1387	1525	1582	1906
	48"	1421	1622	1484	1622	1679	2099
	54"	1451	1653	1514	1653	1710	2291
	60"	1498	1700	1561	1700	1756	2500
	66"	1820	2122	1914	2122	2207	2774
2H	72"	1945	2247	2039	2247	2332	2951
	24"	1144	1245	1176	1245	1273	2097
	30"	1284	1436	1332	1436	1478	2468
	36"	1481	1682	1544	1682	1739	2806
	42"	1522	1724	1585	1724	1781	3161
	48"	1631	1832	1694	1832	1889	3515
	54"	1705	1906	1768	1906	1963	3902
	60"	1917	2119	1980	2119	2175	4272
66"	2288	2590	2382	2590	2675	4791	
72"	2314	2616	2408	2616	2701	5129	

# CWOH

## Open Wall Shelves



### PRODUCT OPTIONS

Height	Depth	Width	Visible Shelf Edge Profile	Omit Shelf	Back Panel Finish	Shelves Finish	Light
<b>3H</b> 3 High, 41-1/4" <b>4H</b> 4 High, 55"	15	024, 030, 036, 042, 048, 054, 060, 066, 072, 078, 084, 090, 096, 102, 108	<b>F</b> Flat <b>K</b> Knife	<b>S</b> Standard, Keep All Shelves <b>A</b> Omit Bottom Shelf <b>B</b> Omit Bottom 2 Shelves	Natural Veneer 2 Natural Veneer 3 Natural Veneer 4 Chroma Wood Rustic Oak	Natural Veneer 2 Natural Veneer 3 Natural Veneer 4 Chroma Wood Rustic Oak Painted Coordinate Finishes	<b>N</b> No Light <b>A</b> All Shelves with Integrated Light Strip <b>B</b> Bottom Shelf only with Integrated Light Strip

### PRICING

Type	Width	Flat	Knife
<b>3 High, 41-1/4"(3H)</b>			
Standard, Keep All Shelves (S)	24"	3196	3525
	30"	3433	3762
	36"	3670	3999
	42"	3923	4252
	48"	4192	4521
	54"	4429	4758
	60"	4715	5126
	66"	4952	5363
	72"	5254	5665
	78"	5517	5928
	84"	5738	6149
	90"	6046	6539
Omit Bottom Shelf (A)	24"	2548	2713
	30"	2736	2901
	36"	2924	3089
	42"	3128	3293
	48"	3332	3497
	54"	3520	3684
	60"	3740	3946
	66"	3928	4133
	72"	4148	4354
	78"	4362	4567
	84"	4533	4739
	90"	4760	5007
Omit Bottom Shelf (A)	96"	4964	5211
	102"	5184	5431
	108"	5356	5602

Type	Width	Flat	Knife
<b>4 High, 55"(4H)</b>			
Standard, Keep All Shelves (S)	24"	4133	4626
	30"	4456	4949
	36"	4779	5272
	42"	5118	5611
	48"	5489	5983
	54"	5812	6306
	60"	6200	6817
	66"	6523	7140
	72"	6943	7560
	78"	7292	7909
Omit Bottom Shelf (A)	24"	3486	3815
	30"	3759	4088
	36"	4033	4362
	42"	4323	4652
	48"	4629	4958
	54"	4903	5232
	60"	5225	5842
	66"	5499	6116
Omit Bottom 2 Shelves (B)	72"	5837	6454
	78"	6137	6754
	24"	2839	3003
	30"	3063	3228
	36"	3287	3452
	42"	3528	3693
	48"	3769	3933
	54"	3993	4158
	60"	4250	4867
	66"	4474	5091
72"	4731	5348	
78"	4981	5598	

If Integrated Light Strip is specified:

	Bottom Shelf Only	Two Shelves	Three Shelves
24", 30", 36" widths, add	1127	1698	2235
42", 48", 54" widths, add	1297	2039	2745
60", 66", 72", 78" widths, add	1541	2510	3632
84", 90", 96" widths, add	1711	3039	n/a
102", 108" widths, add	1860	3301	n/a

# CWOL

Open Wall Shelves,  
above Low Credenza



## PRODUCT OPTIONS

Height	Depth	Width	Visible Shelf Edge Profile	Omit Shelf	Back Panel Finish	Shelves Finish	Light
<b>3L</b> 3 High, 48" <b>4L</b> 4 High, 61-3/4"	15	024, 030, 036, 042, 048, 054, 060, 066, 072, 078	<b>F</b> Flat <b>K</b> Knife	<b>S</b> Standard, Keep All Shelves <b>A</b> Omit Bottom Shelf <b>B</b> Omit Bottom 2 Shelves	Natural Veneer 2 Natural Veneer 3 Natural Veneer 4 Chroma Wood Rustic Oak	Natural Veneer 2 Natural Veneer 3 Natural Veneer 4 Chroma Wood Rustic Oak Painted Coordinate Finishes	<b>N</b> No Light <b>A</b> All Shelves with Integrated Light Strip <b>B</b> Bottom Shelf only with Integrated Light Strip

## PRICING

Type	Width	Flat	Knife
<b>3 High, 48" (3L)</b>			
Standard, Keep All Shelves (S)	24"	3339	3668
	30"	3594	3923
	36"	3849	4178
	42"	4121	4450
	48"	4408	4737
	54"	4647	4976
	60"	4950	5362
	66"	5205	5617
	72"	5519	5930
Omit Bottom Shelf (A)	24"	2692	2857
	30"	2898	3062
	36"	3104	3268
	42"	3326	3490
	48"	3548	3712
	54"	3737	3902
	60"	3975	4181
	66"	4181	4387
	72"	4413	4618
Omit Bottom 2 Shelves (B)	24"	4657	4863

Type	Width	Flat	Knife
<b>4 High, 61-3/4" (4L)</b>			
Standard, Keep All Shelves (S)	24"	4276	4770
	30"	4617	5111
	36"	4958	5452
	42"	5315	5809
	48"	5705	6198
	54"	6030	6523
Omit Bottom Shelf (A)	24"	3629	3958
	30"	3921	4250
	36"	4213	4542
	42"	4521	4850
	48"	4845	5174
Omit Bottom 2 Shelves (B)	54"	5120	5449
	24"	2982	3147
	30"	3225	3389
	36"	3467	3632
	42"	3726	3890
	48"	3984	4149
	54"	4211	4375

If Integrated Light Strip is specified:

	Bottom Shelf Only	Two Shelves	Three Shelves
24", 30", 36" widths, add	1127	1698	2235
42", 48", 54" widths, add	1297	2039	2745
60", 66", 72", 78" widths, add	1541	2510	n/a

# CWCH

## Combination Open Shelves & Lower Panel



### PRODUCT OPTIONS

Height	Depth	Width	Visible Shelf Edge Profile	Number of Shelves	Back Panel Finish	Shelves Finish	Lower Panel Finishes	Light
<b>3H</b> 3 High, 41-1/4" <b>4H</b> 4 High, 55"	15	024, 030, 036, 042, 048, 054, 060, 066, 072, 078, 084, 090, 096, 102, 108	<b>F</b> Flat <b>K</b> Knife	<b>S</b> Single Shelf <b>T</b> Two Shelves	Natural Veneer 2 Natural Veneer 3 Natural Veneer 4 Chroma Wood Rustic Oak	Natural Veneer 2 Natural Veneer 3 Natural Veneer 4 Chroma Wood Rustic Oak Painted Coordinate Finishes	Tackable Panel Fabric Backpainted Glass	<b>N</b> No Light <b>A</b> All Shelves with Integrated Light Strip <b>B</b> Bottom Shelf only with Integrated Light Strip

### PRICING

Height	Number of Shelves	Width	Panel Fabric					Backpainted Glass
			Gr. A	COM	Gr. 1	Gr. 2	Gr. 3	
<b>Flat Edge Profile (F)</b>								
3H	Single Shelf	24"	2739	2840	2770	2840	2868	3577
		30"	2954	3105	3001	3105	3148	4001
		36"	3258	3459	3321	3459	3516	4425
		42"	3407	3608	3470	3608	3665	4865
		48"	3622	3824	3685	3824	3880	5305
		54"	3755	3957	3818	3957	4013	5729
		60"	3921	4122	3984	4122	4179	6185
		66"	4262	4565	4357	4565	4650	6609
		72"	4538	4840	4632	4840	4925	7066
		78"	4697	4999	4791	4999	5084	7516
		84"	4814	5116	4908	5116	5201	7923
		90"	4985	5288	5080	5288	5373	8386
	96"	n/a	n/a	n/a	n/a	n/a	8826	
	102"	n/a	n/a	n/a	n/a	n/a	9283	
	108"	n/a	n/a	n/a	n/a	n/a	9691	
4H	Single Shelf	24"	2854	2955	2885	2955	2983	4277
		30"	3080	3232	3128	3232	3274	4859
		36"	3395	3597	3458	3597	3653	5441
		42"	3556	3757	3618	3757	3814	6039
		48"	3782	3984	3845	3984	4040	6636
		54"	3926	4128	3989	4128	4185	7218
		60"	4103	4304	4166	4304	4361	7832
		66"	4456	4758	4550	4758	4843	8414
		72"	4743	5045	4837	5045	5130	9028
		78"	4913	5215	5007	5215	5300	9635
	Two Shelves	24"	3605	3706	3637	3706	3735	4437
		30"	3905	4056	3952	4056	4099	4944
		36"	4293	4495	4356	4495	4551	5451
		42"	4527	4728	4590	4728	4785	5974
		48"	4843	5045	4906	5045	5101	6513
		54"	5061	5262	5124	5262	5319	7020
		60"	5327	5528	5390	5528	5585	7576
		66"	5753	6055	5847	6055	6140	8083
		72"	6145	6448	6240	6448	6533	8654
		78"	6389	6691	6483	6691	6776	9187

Pricing is continued on the following page.

# CWCH

## Combination Open Shelves & Lower Panel (Continued)

Height	Number of Shelves	Width	Panel Fabric					Backpainted Glass
			Gr. A	COM	Gr. 1	Gr. 2	Gr. 3	
Knife Edge Profile (K)								
3H	Single Shelf	24"	2903	3004	2935	3004	3032	3741
		30"	3119	3270	3166	3270	3312	4165
		36"	3422	3624	3485	3624	3680	4589
		42"	3571	3773	3634	3773	3830	5029
		48"	3787	3988	3850	3988	4045	5470
		54"	3920	4121	3983	4121	4178	5894
		60"	4126	4328	4189	4328	4384	6391
		66"	4468	4770	4562	4770	4855	6815
		72"	4744	5046	4838	5046	5131	7271
		78"	4902	5205	4997	5205	5290	7721
		84"	5019	5322	5114	5322	5407	8129
		90"	5232	5535	5327	5535	5620	8633
		96"	n/a	n/a	n/a	n/a	n/a	9073
102"	n/a	n/a	n/a	n/a	n/a	9530		
108"	n/a	n/a	n/a	n/a	n/a	9937		
4H	Single Shelf	24"	3018	3119	3050	3119	3147	4442
		30"	3245	3396	3292	3396	3439	5024
		36"	3560	3761	3623	3761	3818	5605
		42"	3720	3922	3783	3922	3978	6203
		48"	3947	4148	4010	4148	4205	6801
		54"	4091	4292	4154	4292	4349	7383
		60"	4720	4921	4783	4921	4978	8449
		66"	5073	5375	5167	5375	5460	8414
		72"	5359	5662	5454	5662	5747	9645
	78"	5530	5832	5624	5832	5917	10252	
	Two Shelves	24"	3934	4035	3966	4035	4064	4766
		30"	4234	4385	4281	4385	4428	5273
		36"	4622	4824	4685	4824	4880	5780
		42"	4856	5057	4919	5057	5114	6303
		48"	5172	5374	5235	5374	5430	6842
		54"	5390	5591	5453	5591	5648	7349
		60"	5943	6145	6006	6145	6202	8193
		66"	6370	6672	6464	6672	6757	8700
		72"	6762	7064	6857	7064	7149	9271
78"		7006	7308	7100	7308	7393	9804	

If Integrated Light Strip is specified:

	Bottom Shelf Only	Two Shelves
24", 30", 36" widths, add	1127	1698
42", 48", 54" widths, add	1297	2039
60", 66", 72", 78" widths, add	1541	2510
84", 90", 96" widths, add	1711	n/a
102", 108" widths, add	1860	n/a



# CWCL

## Combination Open Shelves & Lower Panel, above Low Credenzas



### PRODUCT OPTIONS

Height	Depth	Width	Visible Shelf Edge Profile	Number of Shelves	Back Panel Finish	Shelves Finish	Lower Panel Finishes	Light
<b>3L</b> 3 High, 48" <b>4L</b> 4 High, 61-3/4"	15	024, 030, 036, 042, 048, 054, 060, 066, 072, 078	<b>F</b> Flat <b>K</b> Knife	<b>S</b> Single Shelf <b>T</b> Two Shelves	Natural Veneer 2 Natural Veneer 3 Natural Veneer 4 Chroma Wood Rustic Oak	Natural Veneer 2 Natural Veneer 3 Natural Veneer 4 Chroma Wood Rustic Oak Painted Coordinate Finishes	Tackable Panel Fabric Backpainted Glass	<b>N</b> No Light <b>A</b> All Shelves with Integrated Light Strip <b>B</b> Bottom Shelf only with Integrated Light Strip

### PRICING

Height	Number of Shelves	Width	Panel Fabric					Backpainted Glass
			Gr. A	COM	Gr. 1	Gr. 2	Gr. 3	
<b>Flat Edge Profile (F)</b>								
3L	Single Shelf	24"	2796	2897	2827	2897	2925	3885
		30"	3017	3168	3064	3168	3210	4377
		36"	3326	3527	3389	3527	3584	4869
		42"	3480	3682	3543	3682	3739	5378
		48"	3701	3903	3764	3903	3960	5886
		54"	3840	4041	3903	4041	4098	6378
		60"	4011	4212	4074	4212	4269	6903
		66"	4351	4654	4446	4654	4739	7389
		72"	4639	4941	4733	4941	5026	7920
4L	Single Shelf	24"	2912	3013	2943	3013	3041	4586
		30"	3144	3295	3191	3295	3338	5236
		36"	3465	3666	3527	3666	3723	5886
		42"	3631	3832	3694	3832	3889	6553
		48"	3863	4064	3926	4064	4121	7219
		54"	4013	4214	4076	4214	4271	7869
	Two Shelves	24"	3663	3764	3695	3764	3792	4745
		30"	3969	4120	4016	4120	4163	5321
		36"	4363	4564	4426	4564	4621	5896
		42"	4602	4804	4665	4804	4860	6488
		48"	4924	5125	4987	5125	5182	7096
		54"	5147	5349	5210	5349	5405	7671

Pricing is continued on the following page.

# CWCL

## Combination Open Shelves & Lower Panel, above Low Credenzas (Continued)

Height	Number of Shelves	Width	Panel Fabric					Backpainted Glass
			Gr. A	COM	Gr. 1	Gr. 2	Gr. 3	
<b>Knife Edge Profile (K)</b>								
3L	Single Shelf	24"	2960	3061	2992	3061	3090	4049
		30"	3181	3332	3228	3332	3375	4541
		36"	3490	3692	3553	3692	3748	5034
		42"	3645	3846	3708	3846	3903	5542
		48"	3866	4067	3929	4067	4124	6050
		54"	4004	4206	4067	4206	4263	6543
		60"	4216	4418	4279	4418	4474	7108
		66"	4557	4859	4651	4859	4944	7594
		72"	4845	5147	4939	5147	5232	8125
		78"	5015	5318	5110	5318	5403	8650
4L	Single Shelf	24"	3076	3177	3108	3177	3205	4751
		30"	3309	3460	3356	3460	3502	5401
		36"	3629	3831	3692	3831	3887	6051
		42"	3795	3997	3858	3997	4053	6717
		48"	4027	4229	4090	4229	4286	7383
		54"	4177	4379	4240	4379	4435	8034
	Two Shelves	24"	3992	4093	4024	4093	4121	5074
		30"	4298	4449	4345	4449	4492	5650
		36"	4692	4893	4755	4893	4950	6225
		42"	4931	5133	4994	5133	5189	6817
		48"	5253	5454	5316	5454	5511	7425
		54"	5476	5678	5539	5678	5734	8000

If Integrated Light Strip is specified:

	<b>Bottom Shelf Only</b>	<b>Two Shelves</b>
24", 30", 36" widths, add	1127	1698
42", 48", 54" widths, add	1297	2039
60", 66", 72", 78" widths, add	1541	n/a