

accessories & electrical

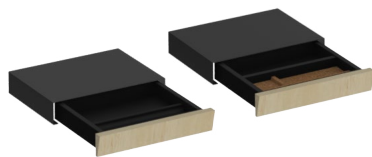
ACCESSORIES & ELECTRICAL: OVERVIEW

Chronicle's Drawer Accessory is included as an option with Mobile Pedestals, or it can be specified separately. The Mini Drawer is designed to affix to the underside of a primary worksurface to offer light additional storage.



Drawer Accessory Tray
(CADA)

Default size: 12" x 14" x 1 3/4"
Cork Organizer size: ~11" x ~4"



Mini Drawer, Undermount Add-On
(CAMD)

Default size: 13 3/4" x 10 7/8" x 2 5/8"
Cork Organizer size: ~11" x ~4"

The cut out to receive CEAP or CEAC is specified with Desks, Run-Offs and Height-Adjustable products. The Grommet can also be specified separately and will fit a standard 2-3/4" cut out.



Chronicle Access Door, No
Power, Cable Drop only
(CEAC)



Chronicle Access Door,
With Power
(CEAP)



Chronicle Above Surface Power
(CESP)



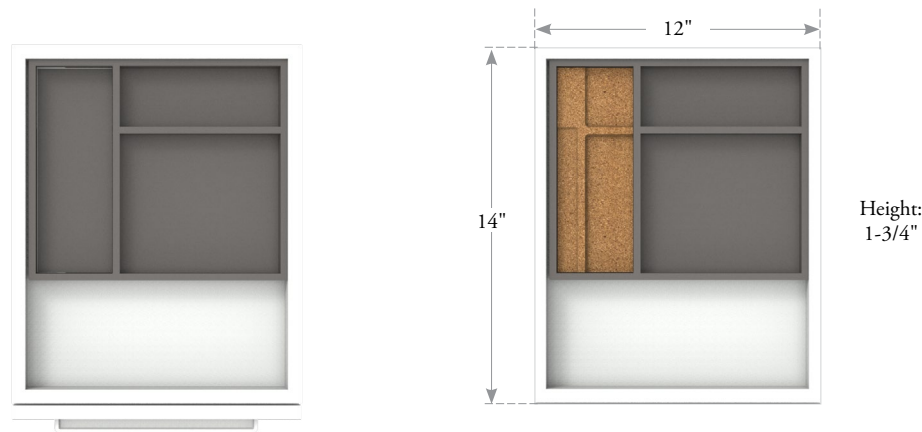
Chronicle Grommet
(CEGS)

Note: All electrical options must be paired with 1 1/2" thick worksurfaces only.

accessories & electrical

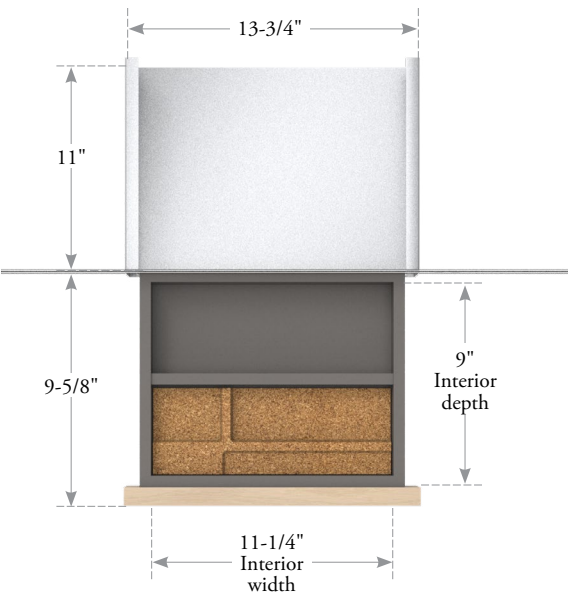
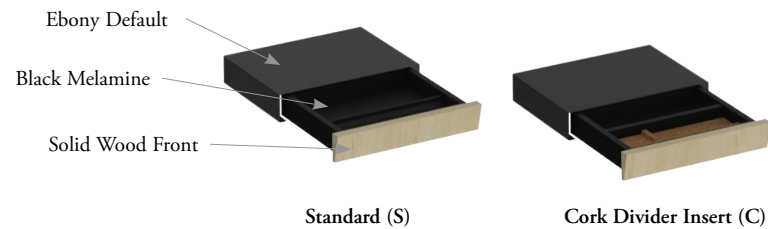
DRAWER ACCESSORY TRAY OVERVIEW

Drawer Accessory Tray is the same as the option within the Mobile Pedestal, included here as a separate product so that it can be used within a drawer or on top of a surface.



MINI DRAWER OVERVIEW

The Mini Drawer is designed to affix to the underside of a primary worksurface to offer light additional storage.

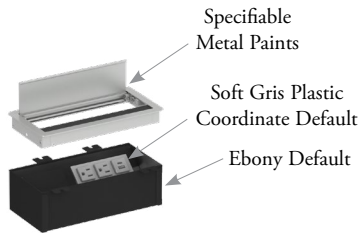


accessories & electrical

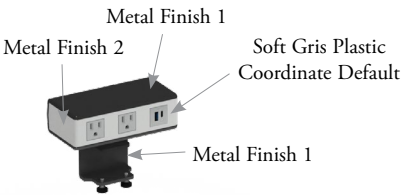
ELECTRICAL OVERVIEW

Electrical cut outs are specified within individual furniture elements. Electrical units are specified separately, with the exception of the Chronicle Grommet which is included with the cut out.

Power Options

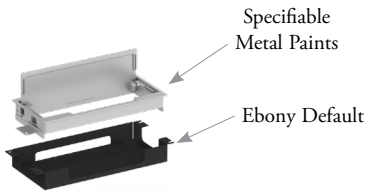


Chronicle Access Door, With Power
(CEAP)

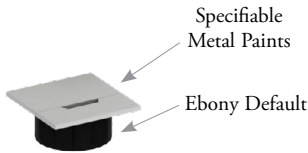


Chronicle Above Surface Power
(CESP)

Cable Management and Pass-Thru ONLY



Chronicle Access Door, No Power,
Cable Drop only
(CEAC)



Chronicle Grommet
(CEGS)

Note: All electrical options must be paired with 1 1/2" thick worksurfaces only.

accessories & electrical

drawer accessory tray (CADA)



PRODUCT OPTIONS

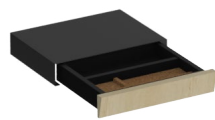
Configuration	Finish
S Standard, No Cork Insert C Cork Divider Insert	Painted Coordinate Finishes

PRICING

Configuration	Price
Standard, No Cork Insert	488
Cork Divider Insert	611

accessories & electrical

mini drawer, undermount add-on (CAMD)



PRODUCT OPTIONS

Configuration	Drawer Front Finish
S Standard C Cork Divider Insert	Natural Veneer 2 Natural Veneer 3 Natural Veneer 4 Chroma Wood Rustic Oak

PRICING

Configuration	Price
Standard	710
Cork Divider Insert	831

accessories & electrical

chronicle access door, no power, cable drop only (CEAC)



NOTES

All electrical options must be paired with 1 1/2" thick worksurfaces only.

PRODUCT OPTIONS

Configuration	Access Door Finish
A Access Door, No Power	Metal Finishes

PRICING

Configuration	Price
Access Door, No Power	203

accessories & electrical

chronicle access door, with power (CEAP)



NOTES

All electrical options must be paired with 1 1/2" thick worksurfaces only.

USB-A port supplies 10 Watts (5VDC) when used in single port mode.

USB-C port supplies 18 Watts (5/9/12VDC) when used in single port mode.

USB-C port will support Quick Charge when used in single port mode.

When both ports are used at the same time, output may be reduced.

PRODUCT OPTIONS

Configuration	Cord & Plug Type	Power Cord Length	Access Door Finish
TPPP Triple - 3 Power TSPP Triple - 1 Standard Capacity USB; 2 Power	A Canada/USA Plug-In	P120 10 feet	Metal Finishes

PRICING

Configuration	Price
Triple - 3 Power	608
Triple - 1 Standard Capacity USB; 2 Power	691

accessories & electrical

chronicle above surface power (CESP)



NOTES

All electrical options must be paired with 1 1/2" thick worksurfaces only.
USB-A port supplies 10 Watts (5 VDC) when used in single port mode.
USB-C port supplies 65 Watts (5-20 VDC) when used in single port mode.
USB-C port will support Quick Charge and Laptop Charging when used in single port mode.
When both ports are used at the same time, output may be reduced.

PRODUCT OPTIONS

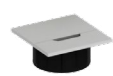
Configuration	Mount Type	Cord & Plug Type	Power Cord Length	Body Finish	Front & Sides Finish
TPPP Triple - 3 Power TSPP Triple - 1 Standard Capacity USB; 2 Power THPP Triple - 1 High Capacity USB; 2 Power	E Desk Edge Clamp G Grommet Mount	A Canada/USA Plug-In	P120 10 feet	Metal Finishes	Metal Finishes

PRICING

Configuration	Desk Edge Clamp	Grommet Mount
Triple - 3 Power	348	379
Triple - 1 Standard Capacity USB; 2 Power	462	483
Triple - 1 High Capacity USB; 2 Power	556	587

accessories & electrical

chronicle grommet [CEGS]



NOTES

All electrical options must be paired with 1 1/2" thick worksurfaces only.

PRODUCT OPTIONS

Configuration	Grommet Finish
A 2-3/4" Cut Out	Metal Finishes

PRICING

Configuration	Price
2-3/4" Cut Out	68

teknion

www.teknion.com

CAN/US/INT 01-27
©Teknion 2025

®, ™ trade marks of Teknion Corporation
and/or its subsidiaries or licensed to it.
Patents may be pending.

Some products may not be available in
all markets. Contact your local Teknion
Representative for availability.

JAN25-CHR