

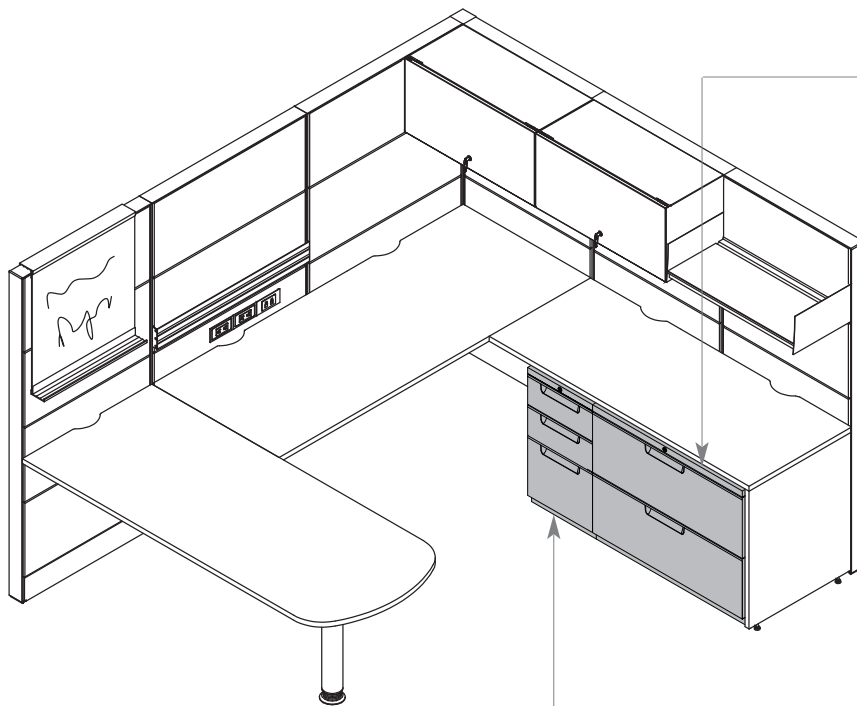
standard storage

STANDARD STORAGE BASICS109

standard storage basics

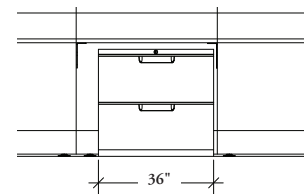
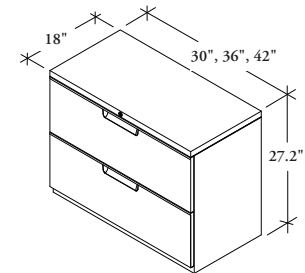
Standard Storage products provide filing and miscellaneous storage beneath the worksurface is an economical alternative to more extensive storage offerings.

- Adjacent drawers align for clean, continual lines. All datum lines are consistent
- All Pedestals are dimensioned to fit beneath the worksurface for filing of documents and small objects. It can be placed anywhere below the worksurface, and is not dependent on panel widths for placement
- Box drawers extend 16" and file drawers extend 19"
- The Integral Pull allows for easy extension of the drawer
- Can be keyed alike or keyed randomly for a dedicated lock
- Counterweights are required for all Pedestals and Stretch Pedestals that are not located under a worksurface
- If counterweights are specified for the 30" and 36" wide Stretch Pedestals, two counterweights will be installed and three counterweights for the 42" wide Stretch Pedestals will be installed
- Pedestal accessories (LPA) and Stretch Pedestal Accessories (LFA) are available and must be ordered separately



Stretch Pedestal

- All drawers fully extend
- Can accommodate imperial and metric size documents
- The width of the Stretch Pedestal should be less than the dimension between worksurface supports of the worksurface it is below

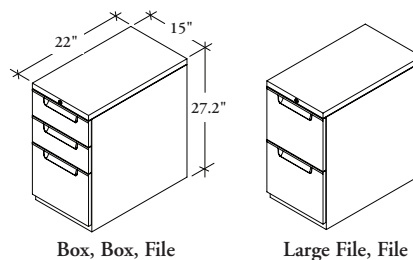
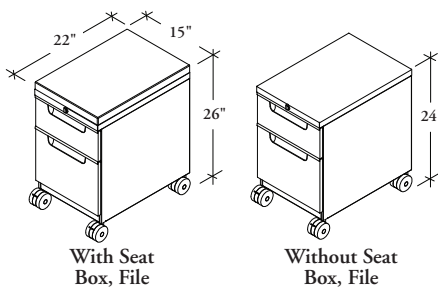


Pedestals (LCD)

- Available in two drawer configurations: Box, Box, File and Large File, File drawers
- Can accommodate letter size documents
- All drawers fully extend with box drawers extending 16" and file drawers extending 19"

Mobile Pedestals (LCMS)

- Available in Box, File configuration
- Available with or without a seat



Finishes

- Available in three Foundation finishes only: Nevada (N), Granite (J), and Ebony (E)
- Keys have a Brushed Chrome finish
- Interiors are Grey

overhead storage