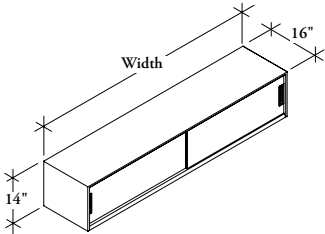


WWGLW  
Closed End Mounted Storage  
Cabinet – Wood Doors



The Closed End Mounted Storage Cabinet – Wood Doors mounts to the end of a double-sided frame to provide shared storage on a benching application. It can be mounted above or below the worksurface.

WHAT’S INCLUDED

1 storage cabinet and mounting brackets (as specified).

NOTES

Whiteboard and tackable back options are only available on the Above Worksurface (A) style.

Style Below Worksurface (W) has visible holes on the top of the cabinet to accommodate a Peninsula Worksurface (WWWRL16) ordered separately.

No additional brackets need to be ordered.

The interior of the cabinet and the bracket will match the case finish.

District Handle Style (D) can only accept Handle Finish All Match Case (C) or All Match Door (D).

PRODUCT OPTIONS

Style	Height	Width	Back Style	Handle Style
<b>B</b> Below Flush <b>W</b> Below Worksurface <b>A</b> Above Worksurface	14	48, 60, 72	<b>M</b> Metal <b>W</b> Whiteboard <b>T</b> Tackable Fabric	<b>D</b> District Handle <b>I</b> Interpret Handle

SAMPLE ORDER CODE

<b>WWGLW B</b>	<b>14</b>	<b>60</b>	<b>M</b>	<b>D</b>
----------------	-----------	-----------	----------	----------

PRODUCT OPTIONS CONTINUED

Case Finish	Secondary Color	Door Finish	Handle Finish	Key Option	Fabric Back Finish
Foundation Mica Accent	Foundation Mica Accent	Source Laminate Flintwood	<b>C</b> All Match Case <b>S</b> Match Secondary Color <b>E</b> Exterior Match Case, Interior Match Secondary Color <b>I</b> Interior Match Case, Exterior Match Secondary Color	<b>K</b> Key Alike <b>R</b> Key Random <b>N</b> No Key	<b>NONE</b> No Fabric Backstyle Panel Fabric

SAMPLE ORDER CODE

<b>74</b>	<b>74</b>	<b>ZA</b>	<b>C</b>	<b>K</b>	<b>NONE</b>
-----------	-----------	-----------	----------	----------	-------------

See pricing on following page.

**W W G L W**  
**Closed End Mounted Storage**  
**Cabinet – Wood Doors (Continued)**

**DIMENSIONS**  
**INCHES / MM**

**PRICING**

		BELOW FLUSH (B) & BELOW WORKSURFACE (W)					
H	W	Foundation Case, Metal Front	Foundation Case, Source Lam. Front	Foundation Case, Flintwood Front	Mica/Accent Case, Metal Front	Mica/Accent Case, Source Lam. Front	Mica/Accent Case, Flintwood Front
14 / 356	48 / 1219	1474	2341	2514	1519	2386	2559
14 / 356	60 / 1524	1553	2480	2665	1603	2530	2714
14 / 356	72 / 1829	1635	2620	2819	1688	2673	2872
		ABOVE WORKSURFACE (A)					
14 / 356	48 / 1219	1519	2386	2559	1566	2432	2606
14 / 356	60 / 1524	1600	2528	2712	1650	2577	2762
14 / 356	72 / 1829	1681	2667	2868	1734	2720	2921

If Whiteboard (W) Back is specified, add 80

If Tackable Fabric (T) Back is specified, add;

	COM	Gr. A	Gr. 1	Gr. 2	Gr. 3	Gr. 4	Gr. 5	Gr. 6	Gr. 7
48"	272	279	285	294	299	304	312	317	326
60"	316	325	331	338	342	349	361	368	375
72"	349	359	367	372	383	393	399	407	417