

The Closed Wood End Mounted Storage Cabinet mounts to the end of a double-sided frame to provide shared storage on a benching application. It can be mounted above or below the worksurface.

WHAT'S INCLUDED

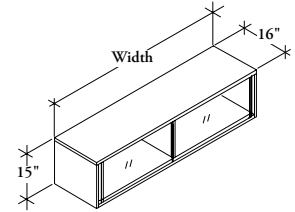
1 storage cabinet and mounting brackets (as specified).

NOTES

Above worksurface style can be mounted inwards if desired.

No additional brackets need to be ordered.

W W G D Closed Wood End Mounted Cabinet



PRODUCT OPTIONS

Style	Height	Width	Pull Finish	Case, Back & Front Finish	Bracket Finish	Key Option
B Below Flush	14	48, 60, 72	Foundation Mica	Source Laminate Flintwood Glass	Foundation Mica Accent	K Key Alike
W Below Worksurface						R Key Random
A Above Worksurface						N No Key

SAMPLE ORDER CODE

WWGD A	14	60	60	ZA	74	K
---------------	-----------	-----------	-----------	-----------	-----------	----------

DIMENSIONS INCHES / MM

H	W
14 / 356	48 / 1219
14 / 356	60 / 1524
14 / 356	72 / 1829

PRICING

SOURCE LAMINATE CASE

Source Lam. Back & Front	Source Lam. Back, Flintwood Front	Source Lam. Back, Glass Front
1496	2283	1719
1703	2421	1906
1925	2568	2142

FLINTWOOD CASE

Flintwood, Back & Front	Flintwood Back, Glass Front
3252	3414
3517	3696
3804	3997

For Below Worksurface (W) or Below Flush (B) Style is specified, add 285 for Brackets

For Above Worksurface (A) Style is specified, add 334 for Brackets