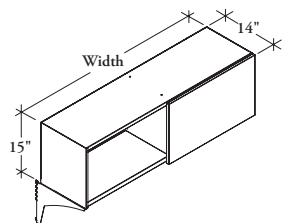


overhead storage

Xpress

LMSU

Upmount Sliding Door Storage Cabinet



The Upmount Sliding Door Storage Cabinet is a panel mounted, on- or off-module lockable storage unit.

WHAT'S INCLUDED

1 cabinet with back cover and 1 door, mounting hardware (as specified), inner cover (as specified), lock and keys.

NOTES

Can be mounted to Leverage and T/O/S.

Xpress Front Finish Style Flinwood (D3) and Natural Veneer are excluded from *Teknion's Xpress Program*.

PRODUCT OPTIONS

Height	Depth	Width	Inner Cover	Case & Inner Cover Finish	Front Finish Style	Key Style	Mounting Hardware
15	14	30, 36, 42, 48	0 None 1 One Side 2 Two Sides	Foundation Mica Accent	D1 Metal (Paint) D6 Fascia Laminate D7 Glass D3 Flintwood DN Natural Veneer	K Keyed Alike R Keyed Randomly	1 Leverage On-Module 2 T/O/S On/Off-Module 3 T/O/S On-Module

SAMPLE ORDER CODE

LMSU 15	14	48	0	74	D3	R	2
----------------	-----------	-----------	----------	-----------	-----------	----------	----------

DIMENSIONS INCHES / MM

H	D	W
15 / 381	14 / 356	30 / 762
15 / 381	14 / 356	36 / 914
15 / 381	14 / 356	42 / 1067
15 / 381	14 / 356	48 / 1219

15 / 381	14 / 356	30 / 762
15 / 381	14 / 356	36 / 914
15 / 381	14 / 356	42 / 1067
15 / 381	14 / 356	48 / 1219

PRICING

NO INNER COVER (0)

Foundation Case

Metal Front		Fascia Laminate Front		Glass Front	Flintwood Front	Natural Veneer Front
Foundation Mica/Accent		Grade 1	Grade 2			
845	860	936	941	948	1023	1031
934	947	1033	1040	1053	1128	1139
1015	1030	1123	1129	1142	1227	1237
1092	1109	1213	1220	1232	1324	1333

Mica/Accent Case

947	964	1037	1045	1054	1123	1135
1025	1040	1128	1135	1145	1222	1232
1136	1152	1244	1251	1264	1347	1361
1223	1241	1341	1354	1363	1455	1466

Pricing is continued on the following page.

Upmount Sliding Door Storage Cabinet (Continued)

DIMENSIONS
INCHES / MM

H	D	W
15 / 381	14 / 356	30 / 762
15 / 381	14 / 356	36 / 914
15 / 381	14 / 356	42 / 1067
15 / 381	14 / 356	48 / 1219

15 / 381	14 / 356	30 / 762
15 / 381	14 / 356	36 / 914
15 / 381	14 / 356	42 / 1067
15 / 381	14 / 356	48 / 1219

15 / 381	14 / 356	30 / 762
15 / 381	14 / 356	36 / 914
15 / 381	14 / 356	42 / 1067
15 / 381	14 / 356	48 / 1219

15 / 381	14 / 356	30 / 762
15 / 381	14 / 356	36 / 914
15 / 381	14 / 356	42 / 1067
15 / 381	14 / 356	48 / 1219

PRICING

INNER COVER, ONE SIDE (1)

Grade 1 Case

Metal Front Foundation Mica/Accent	Fascia Laminate Front Grade 1	Fascia Laminate Front Grade 2	Glass Front	Flintwood Front	Natural Veneer Front	
911	927	1001	1009	1016	1086	1098
997	1015	1100	1107	1115	1192	1203
1077	1097	1190	1193	1204	1289	1302
1154	1176	1280	1283	1293	1385	1401

Mica/Accent

1022	1032	1112	1117	1123	1197	1205
1099	1114	1200	1205	1215	1290	1302
1207	1226	1320	1326	1333	1421	1429
1293	1313	1418	1422	1433	1526	1537

INNER COVER, TWO SIDES (2)

Foundation Case

977	989	1068	1072	1080	1152	1161
1062	1077	1165	1170	1180	1258	1268
1145	1160	1252	1262	1269	1358	1366
1222	1238	1340	1347	1361	1454	1464

Mica/Accent Case

1094	1107	1184	1190	1197	1269	1280
1170	1188	1274	1280	1287	1365	1374
1281	1294	1389	1394	1409	1493	1504
1366	1384	1489	1497	1506	1598	1609