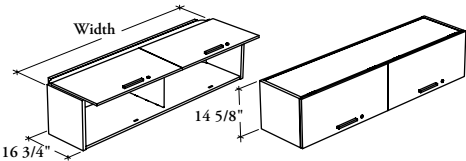


mounted storage & accessories

Xpress

ROCF

Overhead Cabinet – Solid Flipper Door(s)



Column-Mounted

Wall-Mounted

This cabinet is a mounted storage unit that provides above worksurface storage capabilities.

WHAT'S INCLUDED

1 overhead cabinet, column- or wall-mounting supports, pulls, lock and keys, and components as listed below:

| | Widths | |
|---------|------------|------------|
| | 24" to 48" | 54" to 84" |
| Door | 1 | 2 |
| Divider | n/a | 1 |

WHAT'S EXCLUDED

Structural Columns.

NOTES

This cabinet is shipped knocked down.

This cabinet has a 19 1/2" clearance between the top of the desk to the bottom of the cabinet.

Specify the width according to the width of the desk over which the overhead cabinet is mounted. Column-Mounted Overhead Cabinet width is actually 2.5" less.

Soft Touch (2) and Standard T/O/S (4) pulls are only available in limited Foundation colors. Refer to the specification software for details.

PRODUCT OPTIONS

| Mounted Style | Depth | Width | Door Finish | Edge Trim Finish | Case Finish | Shelf and Divider Finish (Source Lam. Case only) | Pull Style | Pull Finish | Key Style | Motion Control Mechanism |
|-------------------------|-------|--|----------------------------------|------------------|-----------------|---|--|----------------|---|--|
| C Column-Mounted | 16 | 24, 30, 36, 42, 48, 54, 60, 66, 72, 78, 84 | Source Laminate | Edge Trim Colors | Source Laminate | Foundation | 1 Standard Expansion | Foundation | K Keyed Alike | 2 With Motion Control Mechanism |
| W Wall-Mounted | | | Foundation Laminate Flintwood | | Foundation Mica | Mica Coordinate Colors | 2 Soft Touch 4 Standard T/O/S 6 Arched 7 Elliptical 9 Rectilinear | Accent Mica | R Keyed Randomly N No Lock | |

SAMPLE ORDER CODE

| | | | | | | | | | | |
|---------------|-----------|-----------|-----------|-----------|----------|--|----------|----------|----------|--|
| ROCF C | 16 | 54 | LY | JY | E | | 1 | E | R | |
|---------------|-----------|-----------|-----------|-----------|----------|--|----------|----------|----------|--|

DIMENSIONS INCHES / MM

| D | W |
|----------|-----------|
| 16 / 406 | 24 / 610 |
| 16 / 406 | 30 / 762 |
| 16 / 406 | 36 / 914 |
| 16 / 406 | 42 / 1067 |
| 16 / 406 | 48 / 1219 |
| 16 / 406 | 54 / 1372 |
| 16 / 406 | 60 / 1524 |
| 16 / 406 | 66 / 1676 |
| 16 / 406 | 72 / 1829 |
| 16 / 406 | 78 / 1981 |
| 16 / 406 | 84 / 2134 |

PRICING

| Source Laminate | Foundation Laminate | Flintwood |
|-----------------|---------------------|-----------|
| 1004 | 1063 | 1600 |
| 1063 | 1104 | 1656 |
| 1131 | 1181 | 1775 |
| 1196 | 1282 | 1919 |
| 1223 | 1328 | 1995 |
| 1256 | 1379 | 2067 |
| 1293 | 1422 | 2133 |
| 1341 | 1482 | 2221 |
| 1384 | 1540 | 2311 |
| 1470 | 1618 | 2424 |
| 1516 | 1696 | 2545 |

If Mica case is specified, add 143.

If Motion Control Mechanism is specified, add 241 (24" – 48" widths).
add 482 (54" – 84" widths).