

This bookcase may be installed under all Expansion Desking desks. It is a low storage in which you can store two rows of standard letter-size binders.

WHAT'S INCLUDED

1 open bookcase and 1 adjustable shelf.

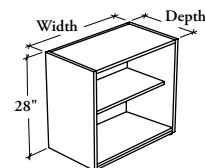
WHAT'S EXCLUDED

Top for Solid Storage Cabinet and Supported Pedestal Kit.

NOTES

11/16" thick construction.

Holes at 1 1/4" intervals on the inside walls of side panels allow for shelf adjustment.

**RBSUB****Underworksurface Bookcase****PRODUCT OPTIONS**

| Depth | Width | Height | Case and Shelf Finish |
|----------------|------------|--------|-----------------------|
| 15, 18, 20, 24 | 24, 30, 36 | 28 | Source Laminate |

SAMPLE ORDER CODE

| | | | |
|-----------------|-----------|-----------|-----------|
| RBSUB 15 | 36 | 28 | 3E |
|-----------------|-----------|-----------|-----------|

**DIMENSIONS
INCHES / MM**

| D | W | H |
|----------|----------|----------|
| 15 / 381 | 24 / 610 | 28 / 737 |
| 15 / 381 | 30 / 762 | 28 / 737 |
| 15 / 381 | 36 / 914 | 28 / 737 |
| 18 / 457 | 24 / 610 | 28 / 737 |
| 18 / 457 | 30 / 762 | 28 / 737 |
| 18 / 457 | 36 / 914 | 28 / 737 |
| 20 / 508 | 24 / 610 | 28 / 737 |
| 20 / 508 | 30 / 762 | 28 / 737 |
| 20 / 508 | 36 / 914 | 28 / 737 |
| 24 / 610 | 24 / 610 | 28 / 737 |
| 24 / 610 | 30 / 762 | 28 / 737 |
| 24 / 610 | 36 / 914 | 28 / 737 |

PRICING

| Source Laminate |
|-----------------|
| 553 |
| 595 |
| 643 |
| 608 |
| 652 |
| 700 |
| 662 |
| 703 |
| 753 |
| 752 |
| 797 |
| 847 |