

These products provide side storage capacity while supporting the worksurface, for an integrated and refined look.

#### WHAT'S INCLUDED

**Shelves tower style:** 1 tower, pulls, levelers, lock and keys, mounting hardware, and shelves as listed below:

	Heights		
	42"	51"	66"
Fixed Shelf	1	1	1
Adjustable Shelf	n/a	2	2

**Wardrobe tower style:** 1 tower, 1 coat rod, 1 adjustable shelf, pulls, levelers, mounting hardware, lock and keys.

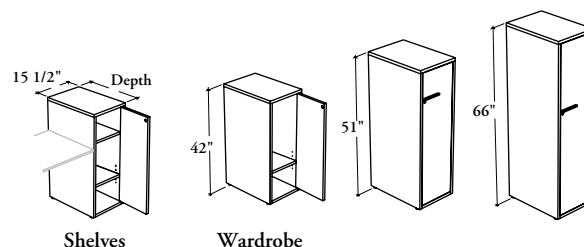
#### NOTES

Specify the depth according to the worksurface on which the tower is installed.

When used with odd worksurface widths, total footprint will respect 6" increments.

Holes at 1 1/4" intervals on the inside walls of side panels allow for shelf adjustment.

Soft Touch (2) and Standard T/O/S (4) pulls are only available in limited Foundation colors. Refer to the specification software for details.



#### PRODUCT OPTIONS

Tower Style	Depth	Height	Configuration	Door and Back Panel Finish	Edge Trim Finish (Door only)	Case Finish	Pull Style	Pull Finish	Key Style
<b>S</b> Shelves	20, 24, 30	42, 51, 66	<b>L</b> Left	Source Laminate Flintwood	Edge Trim Colors	Source Laminate	<b>1</b> Standard Expansion <b>2</b> Soft Touch <b>4</b> Standard T/O/S <b>6</b> Arched <b>7</b> Elliptical <b>9</b> Rectilinear	Foundation Accent Mica	<b>K</b> Keyed Alike <b>R</b> Keyed Randomly <b>N</b> No Lock
<b>W</b> Wardrobe			<b>R</b> Right (Shown)						

#### SAMPLE ORDER CODE

<b>RBHSC W</b>	<b>24</b>	<b>51</b>	<b>R</b>	<b>2E</b>	<b>4E</b>	<b>2E</b>	<b>9</b>	<b>7</b>	<b>K</b>
----------------	-----------	-----------	----------	-----------	-----------	-----------	----------	----------	----------

#### DIMENSIONS INCHES / MM

D	H
20 / 508	42 / 1067
20 / 508	51 / 1295
20 / 508	66 / 1676
24 / 610	42 / 1067
24 / 610	51 / 1295
24 / 610	66 / 1676
30 / 762	42 / 1067
30 / 762	51 / 1295
30 / 762	66 / 1676

#### PRICING

##### SHELVES TOWER STYLE (S)

Source Laminate	Flintwood
1078	1799
1301	2194
1536	2690
1203	1919
1423	2320
1663	2820
1376	2089
1595	2492
1896	3053

##### WARDROBE TOWER STYLE (W)

Source Laminate	Flintwood
1024	1744
1189	2082
1402	2559
1148	1866
1309	2207
1530	2687
1316	2036
1482	2375
1761	2916