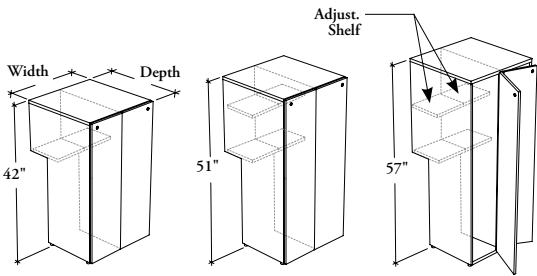


J N F B D S

Dual Beam Tower with Full Solid Doors



This beam tower provides storage area to store garments and other items for two users, while supporting the front of a worksurface and let a beam pass-through.

WHAT'S INCLUDED

1 beam tower, levelers, 2 hang-on kits (if in-line (I)), 1 coat hook on both sides, locks and keys (if specified), beam mounting hardware, and accessories as listed below:

	Heights		
	42"	51"	57"
Adjustable Shelf	n/a	1	1 (on both sides)

NOTES

Both doors swing from the center divider to provide specific opening for each user.  
Holes at 1 1/4" intervals on the inside walls of side panels allow for shelf adjustment.

PRODUCT OPTIONS

Front Style	Interior Configuration	Depth	Width	Height	Position	Door Front Finish	Edge Trim Finish (Laminate Front Only)	Case Finish	Cable Pass-Through	Key Style
S Solid	W Wardrobe	24, 30	18, 24	42, 51, 57	I In-Line	Source Laminate Foundation Laminate	Edge Trim Colors	Source Laminate	X Not Applicable	K Keyed Alike R Keyed Randomly N No Lock

SAMPLE ORDER CODE

JNFBDS	W	24	18	42	I	3D	4D	3D	X	N
S										

DIMENSIONS  
INCHES / MM

D	W	H
24 / 610	18 / 457	42 / 1067
24 / 610	18 / 457	51 / 1295
24 / 610	18 / 457	57 / 1448
24 / 610	24 / 610	42 / 1067
24 / 610	24 / 610	51 / 1295
24 / 610	24 / 610	57 / 1448
30 / 762	18 / 457	42 / 1067
30 / 762	18 / 457	51 / 1295
30 / 762	18 / 457	57 / 1448
30 / 762	24 / 610	42 / 1067
30 / 762	24 / 610	51 / 1295
30 / 762	24 / 610	57 / 1448

PRICING

Source Laminate	Foundation Laminate
1288	1381
1441	1556
1575	1701
1461	1583
1622	1775
1757	1926
1420	1516
1575	1689
1711	1839
1594	1721
1757	1909
1891	2061

