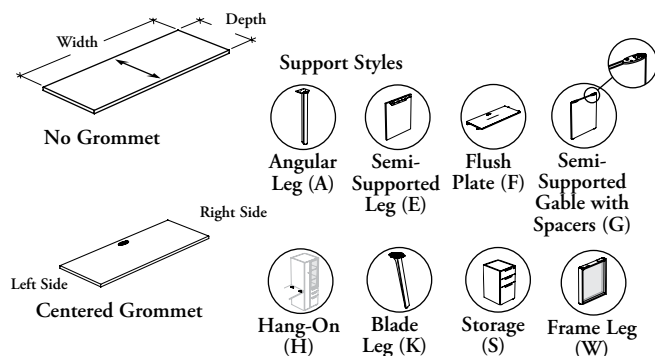


## B \_ R W C

### Cross Grain Rectangular Worksurface



This worksurface may be used as a peninsula, a bridge or as a collaborative worksurface.

#### WHAT'S INCLUDED

1 worksurface, 1 grommet (as specified), 1 cable tray (as specified), 1 reinforcing bar (if applicable) and linking hardware (if applicable).

#### WHAT'S EXCLUDED

Support and Suspended Modesty Panel.

#### NOTES

When the support style (F, H or S) is specified, the linking plates, hang-on or spacer attachments kit are included with the worksurface.

Cannot be supported by a metal storage

Hang-On Support Style (H) is **not** available with 30" or 36" worksurface depths.

If support style (A, E, G or K) is specified for Left Side, they **cannot** be specified for Right Side.

When Blade Leg Support Style (K) is specified, only 30" and 36" worksurface depths are available.

When Centered Grommet Option (C) is specified, a cable tray is also included.

The 1 9/16" (X) thickness is **not** available in all Foundation Laminate, Edge Trim and Grommet finishes. Refer to the finish page of the Application Guide for details.

Hardware is finished in Black.

#### PRODUCT OPTIONS

Worksurface Thickness	Depth	Width	Grommet Option
<b>D</b> 1"	24, 30, 36	42, 48, 54, 60	<b>C</b> Centered
<b>M</b> 1 3/16"			<b>N</b> No Grommet
<b>X</b> 1 9/16"			

#### SAMPLE ORDER CODE

<b>BXRWC</b>	<b>36</b>	<b>60</b>	<b>C</b>
--------------	-----------	-----------	----------

#### PRODUCT OPTIONS CONTINUED

Support Left Side (Not Included)	Support Right Side (Not Included)	Worksurface Finish	Edge Trim Style	Edge Trim Finish	Grommet Finish (If Applicable)
<b>A</b> Angular Leg	<b>A</b> Angular Leg	Source Laminate	<b>6</b> Straight Trim (3mm)	Edge Trim Colors	Source Laminate
<b>E</b> Semi-Supported Leg	<b>E</b> Semi-Supported Leg	Foundation Laminate			
<b>F</b> Flush Plate	<b>F</b> Flush Plate				
<b>G</b> Semi-Supported Gable with Spacers	<b>G</b> Semi-Supported Gable with Spacers				
<b>K</b> Blade Leg	<b>K</b> Blade Leg				
<b>H</b> Hang-On	<b>H</b> Hang-On				
<b>S</b> Storage	<b>S</b> Storage				
<b>W</b> Frame Leg	<b>W</b> Frame Leg				

#### SAMPLE ORDER CODE CONTINUED

<b>F</b>	<b>W</b>	<b>2D</b>	<b>6</b>	<b>4D</b>	<b>3D</b>
----------	----------	-----------	----------	-----------	-----------

See Pricing on the following page.

B \_ R W C

Cross Grain Rectangular  
Worksurface (Continued)

DIMENSIONS INCHES / MM		PRICING		
D	W	1" (D)	1 3/16" (M)	1 9/16" (X)
		Source Laminate	Foundation Laminate	Foundation Laminate
24 / 610	42 / 1067	294	435	529
24 / 610	48 / 1219	332	499	602
24 / 610	54 / 1372	376	563	676
24 / 610	60 / 1524	419	623	751
30 / 762	42 / 1067	370	548	660
30 / 762	48 / 1219	419	623	751
30 / 762	54 / 1372	472	700	846
30 / 762	60 / 1524	521	781	941
36 / 914	42 / 1067	n/a	600	792
36 / 914	48 / 1219	n/a	685	903
36 / 914	54 / 1372	n/a	771	1015
36 / 914	60 / 1524	n/a	854	1127

If Support Style H is specified Left or Right, add 46.

If Support Style H is specified Left and Right, add 92.