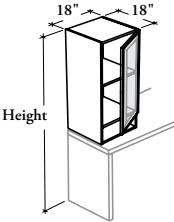


mounted storage & accessories

Xpress

BRHG

Tower with Full Glass Door – High Secondary Desk Mounted



This tower combines a 2-level of closed storage with shelves and a pigeonhole section in a full door aesthetic. It must always be mounted on a High Secondary Desk.

WHAT'S INCLUDED

1 tower, 1 rectangular door, 1 adjustable shelf, mounting hardware, locks and keys (as specified), and components as listed below:

	Heights	
	66"	72" or 81"
Adjustable Shelf	1	2

WHAT'S EXCLUDED

All High Secondary Desks, Multi-Functional Drawer and Shelf for Tower.

NOTES

This mounted tower **cannot** be used alone. It must be connected to another mounted tower, a freestanding tower, a wall panel or a single or double overhead cabinet in order to ensure stability.

The shelf has adjustment at 5 1/8" intervals.

The Multi-Functionnal Drawer (BADMF) can only be installed in the pigeonhole section.

Not all glass finishes are available as Xpress, Please see Xpress catalogue and/or specification software for details.

PRODUCT OPTIONS

Interior Configuration	Depth	Width	Height	Door Swing Direction
S Shelf	18	18	66, 72, 81	L Left Side R Right Side (Shown)

SAMPLE ORDER CODE

BRHG S	18	18	72	L
---------------	-----------	-----------	-----------	----------

PRODUCT OPTIONS CONTINUED

Case Finish	Door Frame Finish	Glass Door Finish	Key Style
Source Laminate Flintwood (No Cathedral)	AC Clear Anodized Foundation Accent Mica	Standard: CL Clear FT Frosted Back-Painted	N No Lock K Keyed Alike R Keyed Randomly

SAMPLE ORDER CODE CONTINUED

3D	60	FT	R
-----------	-----------	-----------	----------

See Pricing on the following page.

B R H G

Tower with Full Glass Door –
High Secondary Desk Mounted (Continued)

CUBE STYLE	PRICING		KEY UPCHARGE
	CLEAR GLASS DOOR (CL)		Keyed Alike or Keyed Randomly
	CASE FINISH		
	Source Laminate	Flintwood	
BRHGS181866	1165	2926	
BRHGS181872	1242	3056	57
BRHGS181881	1416	3186	57
	FROSTED GLASS (FT) / BACK-PAINTED GLASS DOOR		
	CASE FINISH		
	Source Laminate	Flintwood	
BRHGS181866	1284	3045	
BRHGS181872	1366	3180	57
BRHGS181881	1544	3314	57