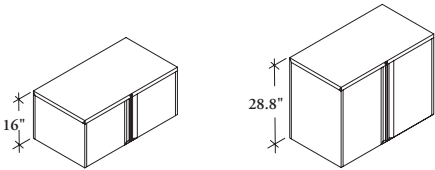


LSA
Add-On Storage Cabinets



Add-On Storage Cabinets provide enclosed storage that can be mounted on top of Ledger Lateral Files and Storage Cabinets.

WHAT’S INCLUDED

Cabinet case, 2 doors, hardware, 1 shelf (two-high only), lock and keys.

NOTES

Full Pull style is finished to match drawer front. Rectangular Handle Pull style will default to Platinum.

Ensure product is leveled. If front/door alignment is needed, it can be done by either releasing the front mounting screws, adjusting the front/door and tightening the screws, or by using hinge adjustments to ensure an equal gap.

PRODUCT OPTIONS

Configuration	Height	Depth	Width	Front Finish Style	Pull Style	Case & Metal Front Finish	Key Style
10 One-High, no shelf	B Binder	18, 20	30, 36, 42	D1 Metal Front	A Full Pull (metal front)	Foundation	K Keyed Alike
21 Two-High with one shelf					B Rectangular Handle Pull	Mica Accent	R Keyed Randomly

SAMPLE ORDER CODE

LSA 10	B	20	30	D1	A	74	K
---------------	----------	-----------	-----------	-----------	----------	-----------	----------

DIMENSIONS
INCHES / MM

D	W
18 / 457	30 / 762
18 / 457	36 / 914
18 / 457	42 / 1067
20 / 508	30 / 762
20 / 508	36 / 914
20 / 508	42 / 1067

PRICING

ONE-HIGH			
FULL PULL		RECTANGULAR PULL	
Foundation	Mica/Accent	Foundation	Mica/Accent
910	956	973	1021
973	1021	1035	1087
1039	1091	1101	1156
910	956	973	1021
973	1021	1035	1087
1039	1091	1101	1156

TWO-HIGH			
FULL PULL		RECTANGULAR PULL	
Foundation	Mica/Accent	Foundation	Mica/Accent
1142	1199	1203	1263
1219	1280	1281	1346
1289	1355	1357	1426
1142	1199	1203	1263
1219	1280	1281	1346
1289	1355	1357	1426

